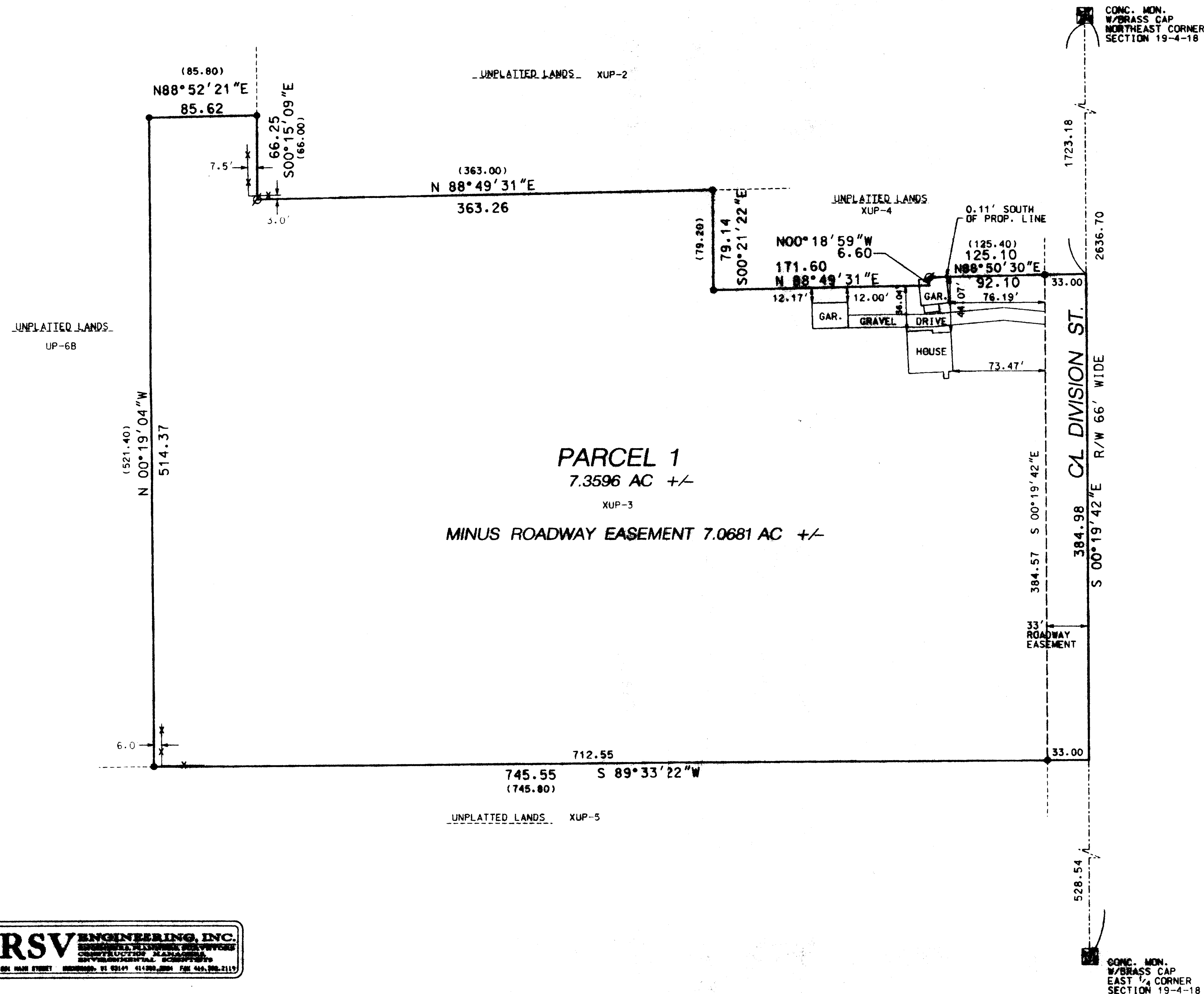


PLAT OF SURVEY



LEGAL DESCRIPTION:

BEING A PARCEL OF LAND LOCATED IN THE SE 1/4 OF THE NE 1/4 OF SECTION 19, TOWN 4 NORTH, RANGE 18 EAST, VILLAGE OF EAST TROY, WALWORTH COUNTY, WISCONSIN BEING MORE COMPLETELY DESCRIBED AS FOLLOWS: COMMENCING AT THE NE CORNER OF SAID SECTION 19; THENCE WITH THE EAST LINE OF SAID NE 1/4 S 00°19'42"E, A DISTANCE OF 1723.18' TO THE POINT OF BEGINNING; THENCE CONTINUING S 00°19'42"E, A DISTANCE OF 384.98' TO A POINT; THENCE S 89°33'22"W, A DISTANCE OF 745.55' TO A POINT; THENCE N 00°19'04"W, A DISTANCE OF 514.37' TO A POINT; THENCE N 88°52'21"E, A DISTANCE OF 85.62' TO A POINT; THENCE S 00°15'09"E, A DISTANCE OF 66.25' TO A POINT; THENCE N 88°49'31"E, A DISTANCE OF 363.26' TO A POINT; THENCE S 00°21'22"E, A DISTANCE OF 79.14' TO A POINT; THENCE N 88°49'31"E, A DISTANCE OF 171.60' TO A POINT; THENCE N 00°18'59"W, A DISTANCE OF 6.60' TO A POINT; THENCE N 88°50'30"E, A DISTANCE OF 125.10' TO THE POINT OF BEGINNING. SAID PARCEL CONTAINING 7.359 ACRES MORE OR LESS.

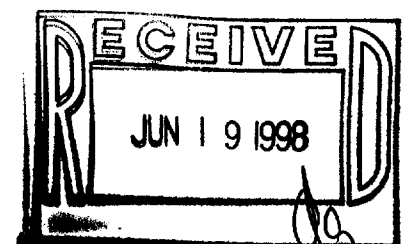
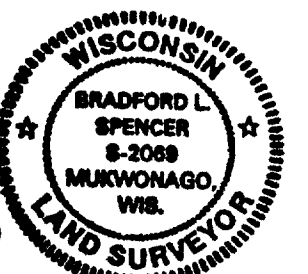
SURVEYOR'S CERTIFICATE:

THE ABOVE MAP IS A TRUE REPRESENTATION THEREOF AND SHOWS THE SIZE AND LOCATION OF ALL THE PROPERTY EXTERIOR BOUNDARIES, THE LOCATION OF ALL VISIBLE BOUNDARY FENCES, APPARENT EASEMENTS, ROADWAYS AND VISIBLE ENCROACHMENTS, IF ANY.

THIS SURVEY IS MADE FOR THE USE OF THE PRESENT OWNERS OF THE PROPERTY, AND ALSO THOSE WHO PURCHASE, MORTGAGE OR GUARANTEE TITLE THERETO WITHIN ONE YEAR FROM DATE HERETO.

BRADFORD L. SPENCER, R.L.S. 2069
RSV# 98-114.dgn

THIS IS ORIGINAL
PRINT ONLY IF
SEAL IS IMPRINTED
IN RED



RxUP-3
003-566