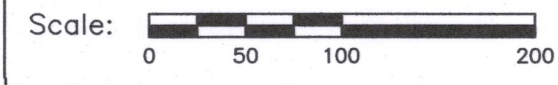



PART OF THE NW ¼ OF SECTION 30 TOWNSHIP 4 NORTH, RANGE 18 EAST, IN THE VILLAGE OF EAST TROY, WALWORTH COUNTY, WISCONSIN.



NORTH 1/4 CORNER 
SEC. 30-4-18

CENTER SEC
30-4-18

(No.) (CORRESPONDS WITH B EXCEPTIONS ON THE MAP)

TABLE A NOTES

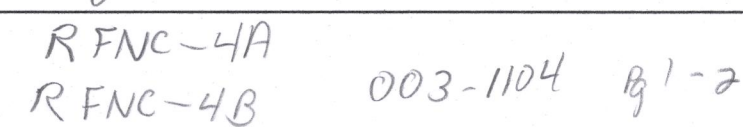
- LEGAL DESCRIPTION PROVIDED PER THIS SURVEY WAS PREPARED BASED ON FIRST AMERICAN TITLE INSURANCE COMPANY COMMITMENT FOR TITLE INSURANCE, COMMITMENT NO. 75257, DATED SEPTEMBER 13, 2016.

AND CONDOMINIUM PLAT THEREOF, QUITS UNENLINED, AND INCLUDING PARCELS 2 BEING A PART OF THE NW 1/4 OF SECTION 30, TOWN 4 NORTH, RANGE 18 EAST, VILLAGE OF EAST TROY, COUNTY, WISCONSIN, BEING MORE COMPLETELY DESCRIBED AS FOLLOWS: COMMENCING AT THE NW CORNER OF SAID SECTION 30; THENCE WITH THE WEST LINE OF SAID NW 1/4, S0°06'57"E, A DISTANCE OF 675.03' TO A POINT; THENCE N82°03'48"E, A DISTANCE OF 125.81' TO A POINT; THENCE N82°03'48"E, A DISTANCE OF 503.74' TO A POINT; THENCE S00°06'40"W, A DISTANCE OF 125.81' TO A POINT; THENCE N82°02'00"E, A DISTANCE OF 368.12' TO A POINT; THENCE S07°59'57"E, A DISTANCE OF 0.70' TO A POINT ON A CURVE; THENCE WITH SAID CURVE TO THE LEFT A LENGTH OF 140.31, SAID CURVE HAVING A RADIUS OF 155.00, A CHORD THAT BEARS S51°13'03"W, FOR A DISTANCE OF 135.57' TO A POINT; THENCE S64°42'55"E, A DISTANCE OF 40.00' TO THE POINT OF BEGINNING; THENCE S25°17'05"W, A DISTANCE OF 9.03' TO A POINT ON A CURVE; THENCE WITH SAID CURVE TO THE LEFT A LENGTH OF 85.20', SAID CURVE HAVING A RADIUS OF 55.00', A CHORD THAT BEARS S19°05'28"E FOR A DISTANCE OF 76.33' TO A POINT; THENCE S63°28'01"E, A DISTANCE OF 9.51' TO A POINT ON A CURVE; THENCE WITH SAID CURVE TO THE LEFT A LENGTH OF 74.58', SAID CURVE HAVING A RADIUS OF 360.00', A CHORD THAT BEARS S69°24'07"E FOR A DISTANCE OF 74.45' TO A POINT; THENCE N14°39'48"E, A DISTANCE OF 80.00' TO A POINT; THENCE N86°59'13"E, A DISTANCE OF 175.00' TO A POINT; THENCE S19°34'23"E, A DISTANCE OF 79.48' TO A POINT ON A CURVE; THENCE WITH SAID CURVE TO THE LEFT A LENGTH OF 52.50, SAID CURVE HAVING A RADIUS OF 360.00', A CHORD THAT BEARS N65°01'57"E FOR A DISTANCE OF 52.45' TO A POINT; THENCE N60°51'18"E, A DISTANCE OF 13.88' TO A POINT ON A CURVE; THENCE WITH SAID CURVE TO THE LEFT A LENGTH OF 74.19', SAID CURVE HAVING A RADIUS OF 70.00', A CHORD THAT BEARS N30°29'33"E FOR A DISTANCE OF 70.77' TO A POINT; THENCE N00°07'47"E, A DISTANCE OF 18.80' TO A POINT; THENCE N39°40'33"W, A DISTANCE OF 15.62' TO A POINT; THENCE N00°07'47"E, A DISTANCE OF 20.00' TO A POINT; THENCE N74°09'23"E, A DISTANCE OF 10.40' TO A POINT; THENCE N00°07'47"E, A DISTANCE OF 12.67' TO A POINT ON A CURVE; THENCE WITH SAID CURVE TO THE LEFT A LENGTH OF 28.53', SAID CURVE HAVING A RADIUS OF 20.00', A CHORD THAT BEARS N40°44'33"W, A DISTANCE OF 26.18' TO A POINT THENCE N81°36'53"W, A DISTANCE OF 9.30' TO A POINT ON A CURVE; THENCE WITH SAID CURVE TO THE LEFT A LENGTH OF 300.21', SAID CURVE HAVING A RADIUS OF 810.00', A CHORD THAT BEARS S87°46'04"W FOR A DISTANCE OF 298.49' TO A POINT; THENCE S77°09'00"W, A DISTANCE OF 14.26' TO A POINT ON A CURVE; THENCE WITH SAID CURVE TO THE LEFT A LENGTH OF 104.10', SAID CURVE HAVING A RADIUS OF 115.00', A CHORD THAT BEARS S51° 13'03"W FOR A DISTANCE OF 100.58' TO THE POINT OF BEGINNING. SAID PARCEL CONTAINS 1.26 ACRES.

Said land being "EXPANSION LAND" within Fields Neighborhood Condominium, created by Declaration dated June 22, 2005 and recorded in the Walworth County Register of Deeds Office on July 22, 2005, as Document No. 647594 and Condominium Plat thereof, and as amended.

Dated this 30th day of March, 2017.

Gary R. Splinter



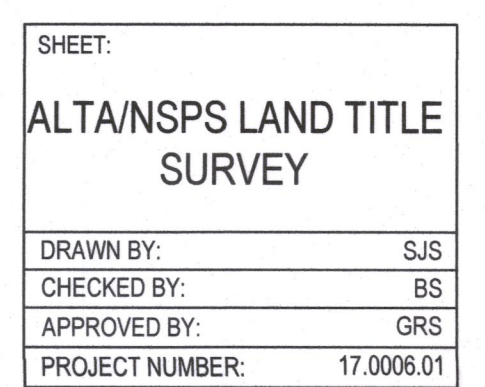
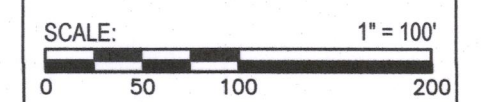
KAPUR & ASSOCIATES, INC.
CONSULTING ENGINEERS
1224 SOUTH PINE STREET
BURLINGTON, WISCONSIN 53105
Phone: 262-767-2747 Fax: 262-767-2750
www.kapurengineers.com

LOCATION:
VILLAGE OF EAST
TROY, WISCONSIN

RELEASE:

FINAL DRAFT

NORTH ARROW:



SHEET NUMBER:

1 OF 2

Line Table		
Line #	Length	Direction
L1	9.03'	S25°17'05"W
L2	13.88'	N60°51'18"E
L3	9.30'	N81°36'53"W
L4	14.26'	S77°09'00"W
L5	9.03'	S25°17'05"W
L6	9.51'	S63°28'01"E
L7	13.88'	N60°51'18"E
L8	18.80'	N00°07'47"E
L9	15.62'	N39°40'33"W
L10	20.00'	N00°07'47"E
L11	10.40'	N74°09'23"E
L12	12.67'	N00°07'47"E
L13	0.70'	S07°53'57"E
L14	2.73'	S89°52'11"E

Curve Table				
Curve #	Radius	Length	Chord	Chord Bearing
C1	155.00'	140.31'	135.57'	S51°13'03"W
C2	95.00'	51.92'	51.27'	S09°37'46"W
C3	400.00'	204.38'	202.16'	N75°29'34"E
C4	110.00'	110.89'	106.25'	N31°58'34"E
C5	200.00'	28.53'	26.18'	N40°44'33"W
C6	810.00'	300.21'	298.49'	S87°46'04"W
C7	115.00'	104.10'	100.58'	S51°13'03"W
C8	55.00'	85.20'	76.93'	S19°05'28"E
C9	360.00'	74.58'	74.45'	S69°24'07"E
C10	360.00'	52.50'	52.45'	N65°01'57"E
C11	70.00'	74.19'	70.77'	N30°29'33"E

Note:
Underground Utilities Located by:

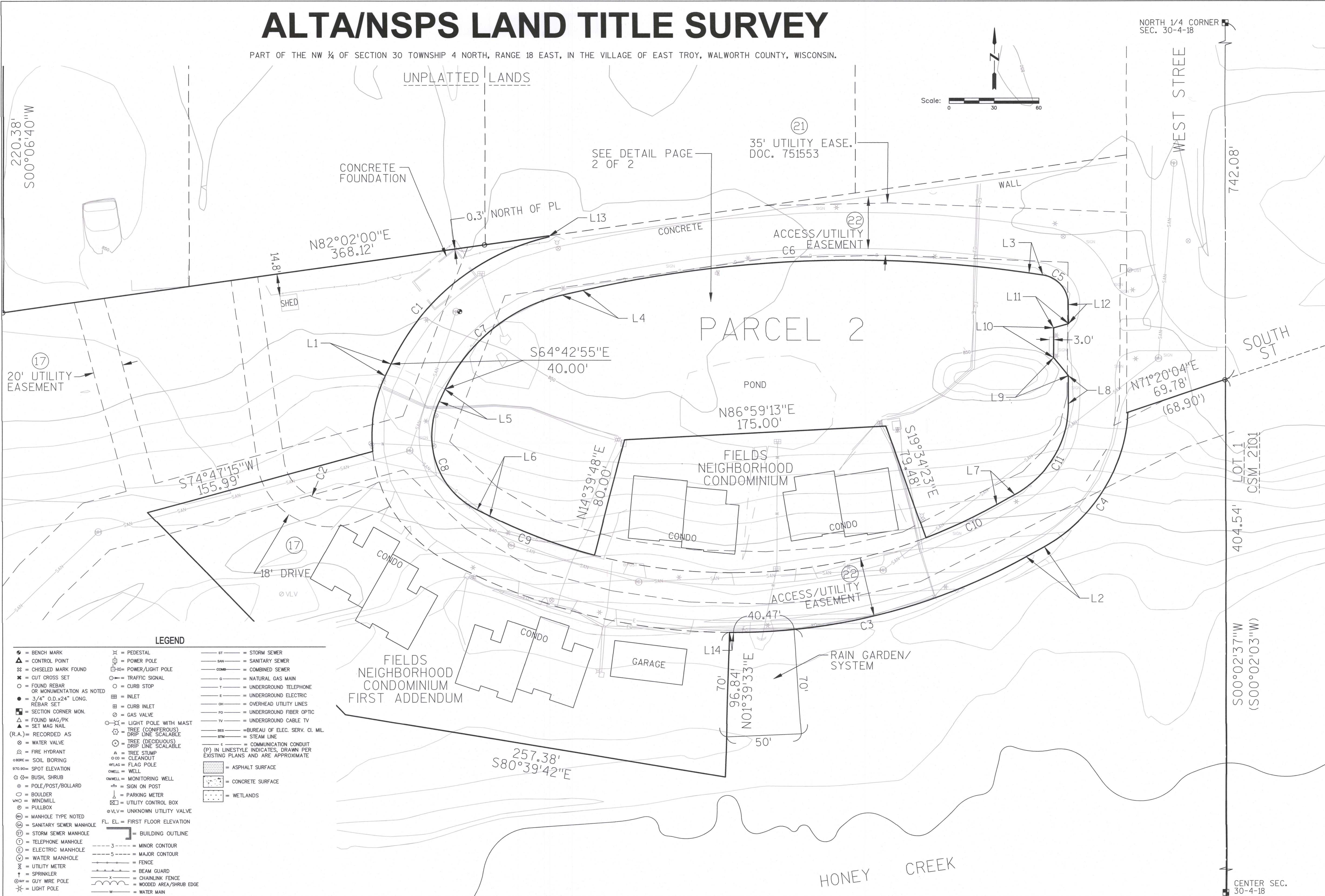
DIGGERSHOTLINE

Toll Free (800)242-8511
Milwaukee Area (414)259-1181
Hearing Impaired TDD (800)542-2289
www.DiggersHotline.com
REGISTER'S HOTLINE TICKETS:
20164111258 & 20164111185

ALTHOUGH DIGGERS' HOTLINE WAS NOTIFIED THIS SURVEY DOES NOT GUARANTEE THAT ALL UTILITIES HAVE BEEN LOCATED ON SITE. SOME OF THE UTILITIES MAY HAVE BEEN DRAWN IN PER PLAN BASED ON MAPS RECEIVED FROM MEMBERS NOTIFIED. LACKING EXCAVATION THE EXACT LOCATION OF UNDERGROUND FEATURES CANNOT BE ACCURATELY, COMPLETELY AND RELIABLY DEPICTED. WHERE ADDITIONAL OR MORE DETAILED INFORMATION IS REQUIRED, THE CLIENT IS ADVISED THAT EXCAVATION MAY BE NECESSARY.

ALTA/NSPS LAND TITLE SURVEY

PART OF THE NW ¼ OF SECTION 30 TOWNSHIP 4 NORTH, RANGE 18 EAST, IN THE VILLAGE OF EAST TROY, WALWORTH COUNTY, WISCONSIN.



LEGEND

- = BENCH MARK
- △ = CONTROL POINT
- ⊠ = CHISELED MARK FOUND
- ✱ = CUT CROSS SET
- = FOUND REBAR OR MONUMENTATION AS NOTED
- = 3/4" O.D. x 24" LONG. REBAR SET
- ⊠ = SECTION CORNER MON.
- △ = FOUND MAG/PO
- ▲ = SET MAG NAIL
- (R.A.) = RECORDED AS
- ⊙ = WATER VALVE
- ⊙ = FIRE HYDRANT
- ⊙ = SOIL BORING
- 970.00 = SPOT ELEVATION
- ⊙ = BUSH, SHRUB
- ⊙ = POLE/POST/BOLLARD
- ⊙ = BOULDER
- WMO = WINDMILL
- ⊙ = PULLBOX
- (M) = MANHOLE TYPE NOTED
- (S) = SANITARY SEWER MANHOLE
- (ST) = STORM SEWER MANHOLE
- (T) = TELEPHONE MANHOLE
- (E) = ELECTRIC MANHOLE
- (W) = WATER MANHOLE
- ⊙ = UTILITY METER
- ⊙ = SPRINKLER
- ⊙ = GUY WIRE POLE
- ⊙ = LIGHT POLE
- ⊙ = PEDESTAL
- ⊙ = POWER POLE
- ⊙ = POWER/LIGHT POLE
- ⊙ = TRAFFIC SIGNAL
- ⊙ = CURB STOP
- ⊙ = INLET
- ⊙ = CURB INLET
- ⊙ = GAS VALVE
- ⊙ = LIGHT POLE WITH MAST
- ⊙ = TREE (CONIFEROUS) DRIP LINE SCALABLE
- ⊙ = TREE (DECIDUOUS) DRIP LINE SCALABLE
- ⊙ = TREE STUMP
- ⊙ = CLEANOUT
- ⊙ = FLAG POLE
- ⊙ = WELL
- ⊙ = MONITORING WELL
- ⊙ = SIGN ON POST
- ⊙ = PARKING METER
- ⊙ = UTILITY CONTROL BOX
- ⊙ = UNKNOWN UTILITY VALVE
- FL. EL. = FIRST FLOOR ELEVATION
- ⊙ = BUILDING OUTLINE
- ⊙ = MINOR CONTOUR
- ⊙ = MAJOR CONTOUR
- ⊙ = FENCE
- ⊙ = BEAM GUARD
- ⊙ = CHAINLINK FENCE
- ⊙ = WOODED AREA/SHRUB EDGE
- ⊙ = WATER MAIN
- ⊙ = STORM SEWER
- ⊙ = SANITARY SEWER
- ⊙ = COMBINED SEWER
- ⊙ = NATURAL GAS MAIN
- ⊙ = UNDERGROUND TELEPHONE
- ⊙ = UNDERGROUND ELECTRIC
- ⊙ = OVERHEAD UTILITY LINES
- ⊙ = UNDERGROUND FIBER OPTIC
- ⊙ = UNDERGROUND CABLE TV
- ⊙ = BUREAU OF ELEC. SERV. CI. MIL.
- ⊙ = STEAM LINE
- ⊙ = COMMUNICATION CONDUIT
- (P) IN LINESYLE INDICATES, DRAWN PER EXISTING PLANS AND ARE APPROXIMATE
- ⊙ = ASPHALT SURFACE
- ⊙ = CONCRETE SURFACE
- ⊙ = WETLANDS



KAPUR & ASSOCIATES, INC.
CONSULTING ENGINEERS
1224 SOUTH PINE STREET
BURLINGTON, WISCONSIN 53105
Phone: 262-787-2747 Fax: 262-787-2750
www.kapurengineers.com

PROJECT:
EXPANSION LANDS
FIELDS
NEIGHBORHOOD
CONDOMINIUM

LOCATION:
VILLAGE OF EAST
TROY, WISCONSIN

CLIENT:
PSG, INC.

RELEASE:
FINAL DRAFT

REVISIONS:		
#	DATE	DESCRIPTION



SCALE: 1" = 30'



SHEET:
ALTA/NSPS LAND TITLE
SURVEY

DRAWN BY: SJS
CHECKED BY: BS
APPROVED BY: GRS
PROJECT NUMBER: 17.0006.01

SHEET NUMBER:
2 OF 2