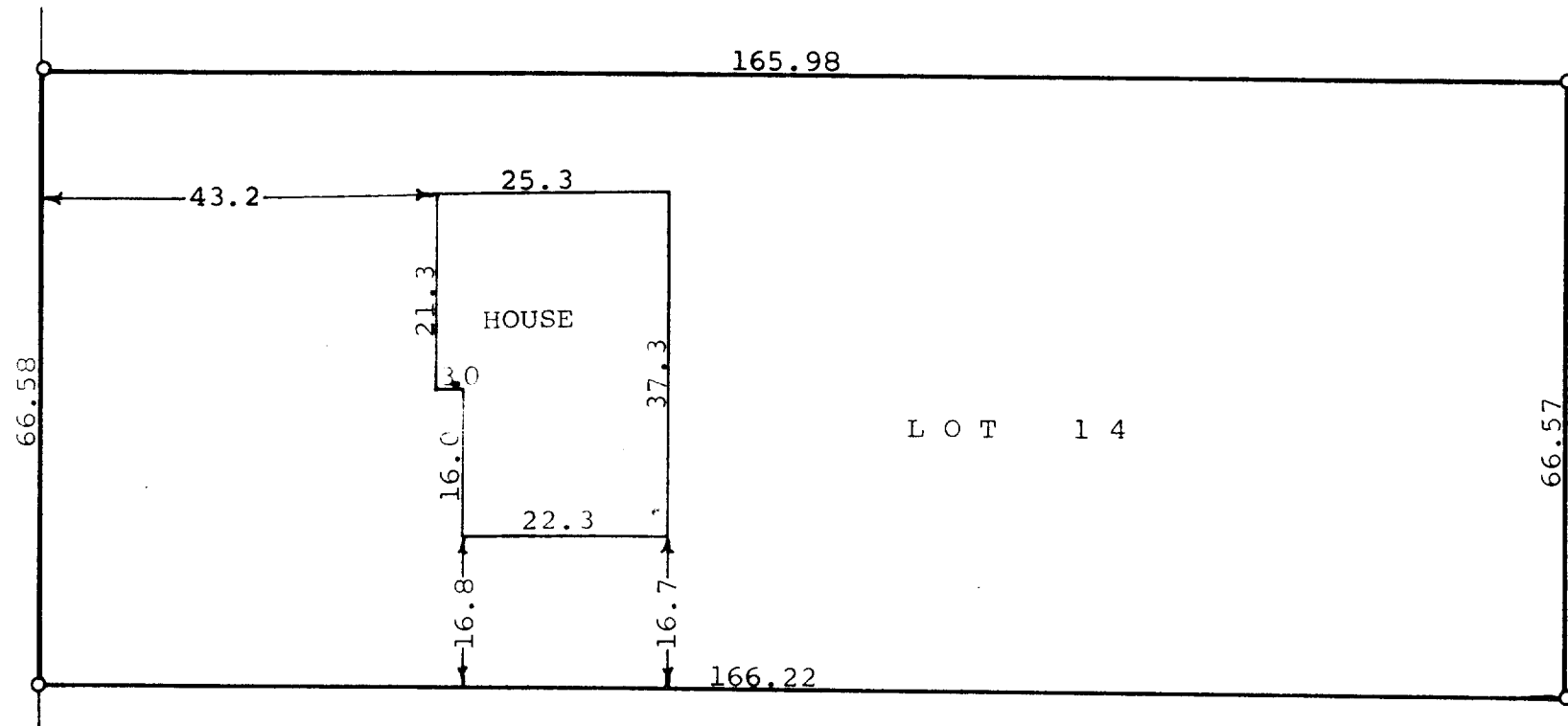


SIXTH

STREET



N

Scale - 1" = 20'  
o = Iron Pipe

STATE OF WISCONSIN)  
COUNTY OF WALWORTH)) SS

I, George T. Dunham, Surveyor, certify that I have surveyed the property described as follows,  
Lot 14 in Block 11 of Passage, Aram, and Downk  
Addition to the City of Delavan, Walworth County, Wisconsin,  
and that the above plat is as accurate survey and a true representation thereof and correctly shows the exterior boundary lines and the location of the house on said property and the correct measurements thereof.  
July 6, 1973

George T. Dunham  
George T. Dunham, Surveyor

