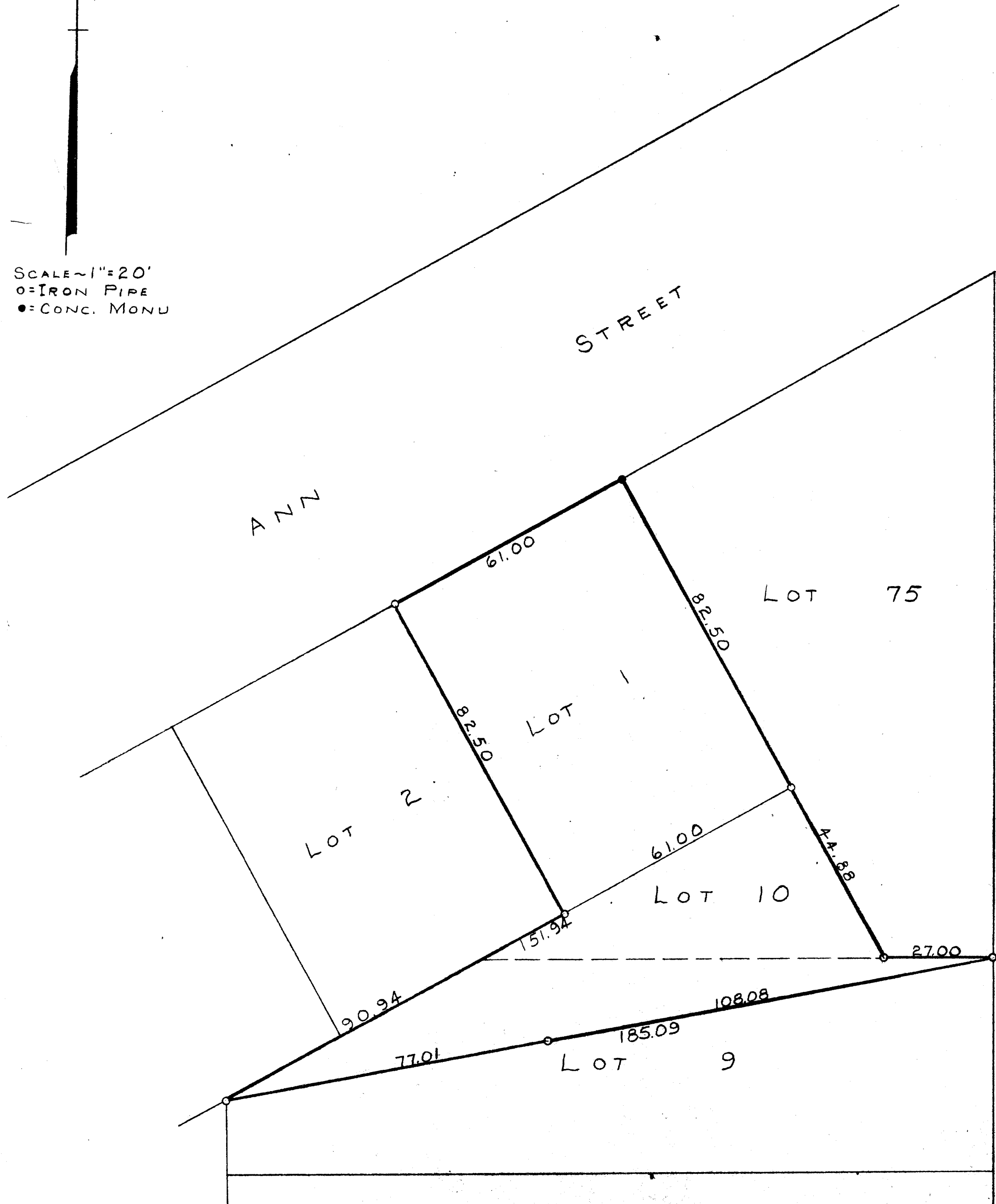




SCALE ~ 1" = 20'  
○ = IRON PIPE  
● = CONC. MONU



PLAT OF SURVEY OF LOT 1, BLOCK 20, PASSAGE, ARAM, AND  
DOWNIE ADDITION, AND PART OF LOTS 9 AND 10 OF BRADLEY  
ANNEX, CITY OF DELAYAN, WALWORTH COUNTY, WISCONSIN  
AUGUST 12, 1954  
REVISED AUG. 25, 1954.  
*George T. Dunham*  
GEORGE T. DUNHAM, SURVEYOR  
DELAYAN, WISCONSIN

XP-214 (R.V.D) + VCR-1F (R.V.D)

2-48