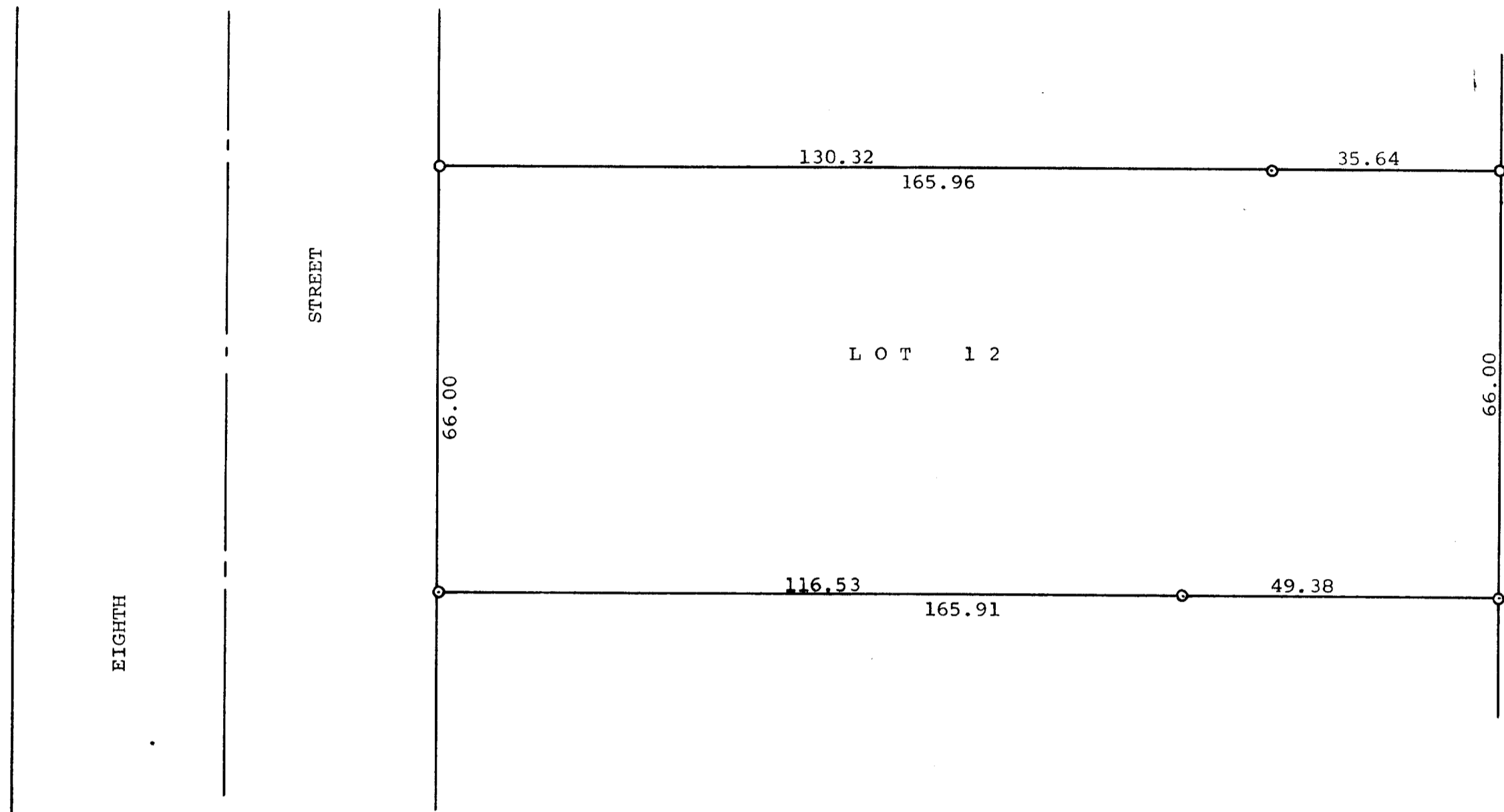


GEORGE T. DUNHAM
SURVEYING & SUBDIVIDING
DELAVAN, WISCONSIN



N



Scale - 1" = 20'
O = Iron Pipe

Plat of survey of Lot 12, Block 20, Passage,
Aram, & Downie Addition to the City of Delavan,
Walworth County, Wisconsin.
October 7, 1968

George T. Dunham
George T. Dunham, Surveyor