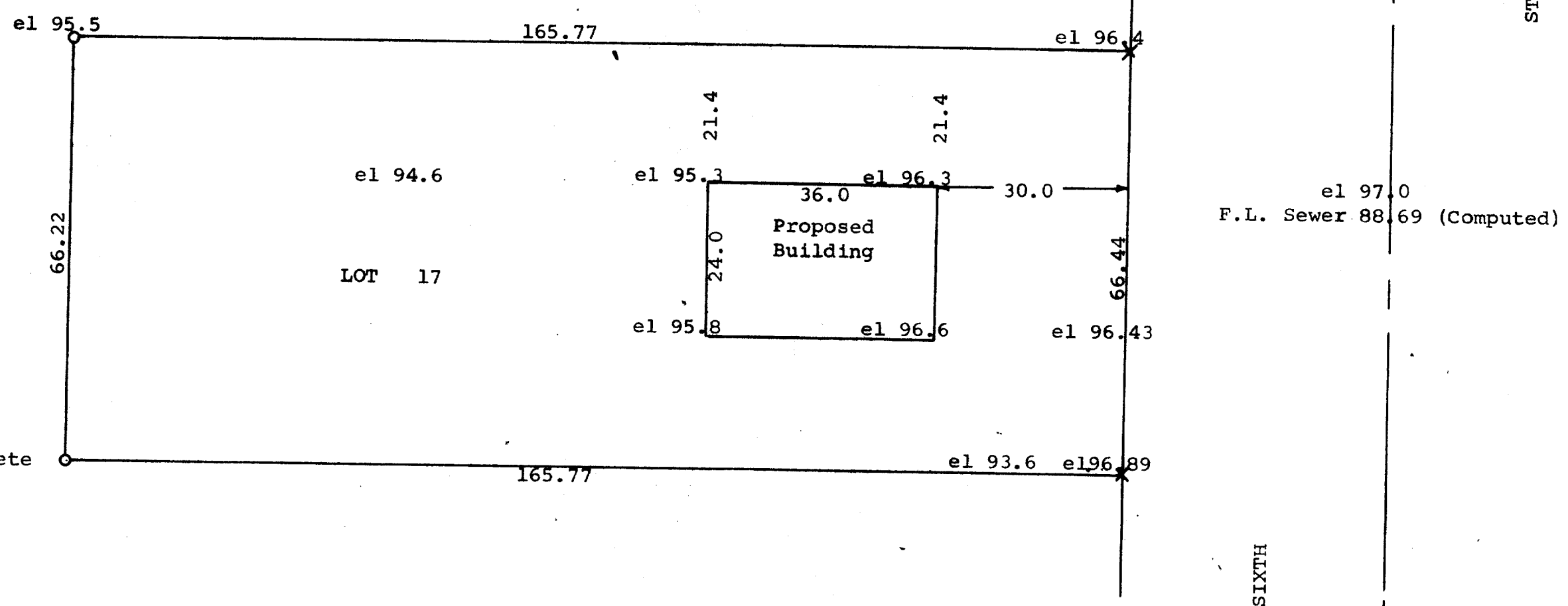


GEORGE T. DUNHAM
SURVEYING & SUBDIVIDING
DELAVAN, WISCONSIN

Bench Mark - Rim of Man Hole at
Intersection of Ann and 6th Streets
Assumed Elevation = 100.00
Invert Elevation = 89.60

N



Scale 1" = 20'
O = Iron Pipe
X = Cross in Concrete

Invert Elevation at Manhole
at intersection of Geneva &
6th Streets = 87.92

Plat of survey of Lot 17, Block 4 of Passage, Aram & Downie
Addition to the City of Delavan, Walworth County, Wisconsin,
showing the location of a proposed building to be built on said
lot and elevations on the ground at various points.
August 5, 1968

George T. Dunham
George T. Dunham, Surveyor