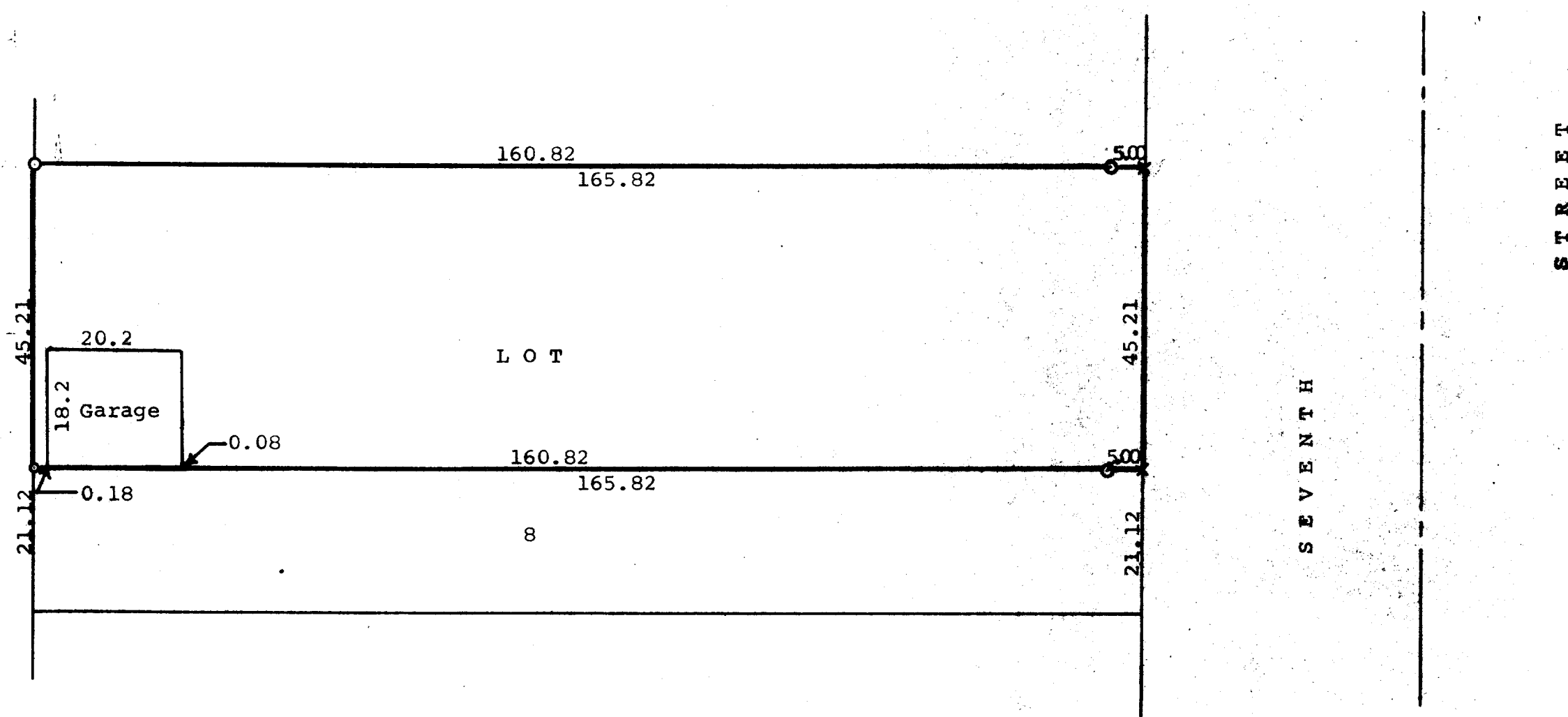


GEORGE T. DUNHAM
SURVEYING & SUBDIVIDING
DELAVER, WISCONSIN



Scale - 1" = 20'
O = Iron Pipe
x = Cross in Concrete

Plat of survey of that part of Lot 8, Block 7, Passage, Aram and Downie's Addition to the Village (now City) of Delavan, Walworth County, Wisconsin owned by the Milne Estate.
April 7, 1966

George T. Dunham
George T. Dunham, Surveyor