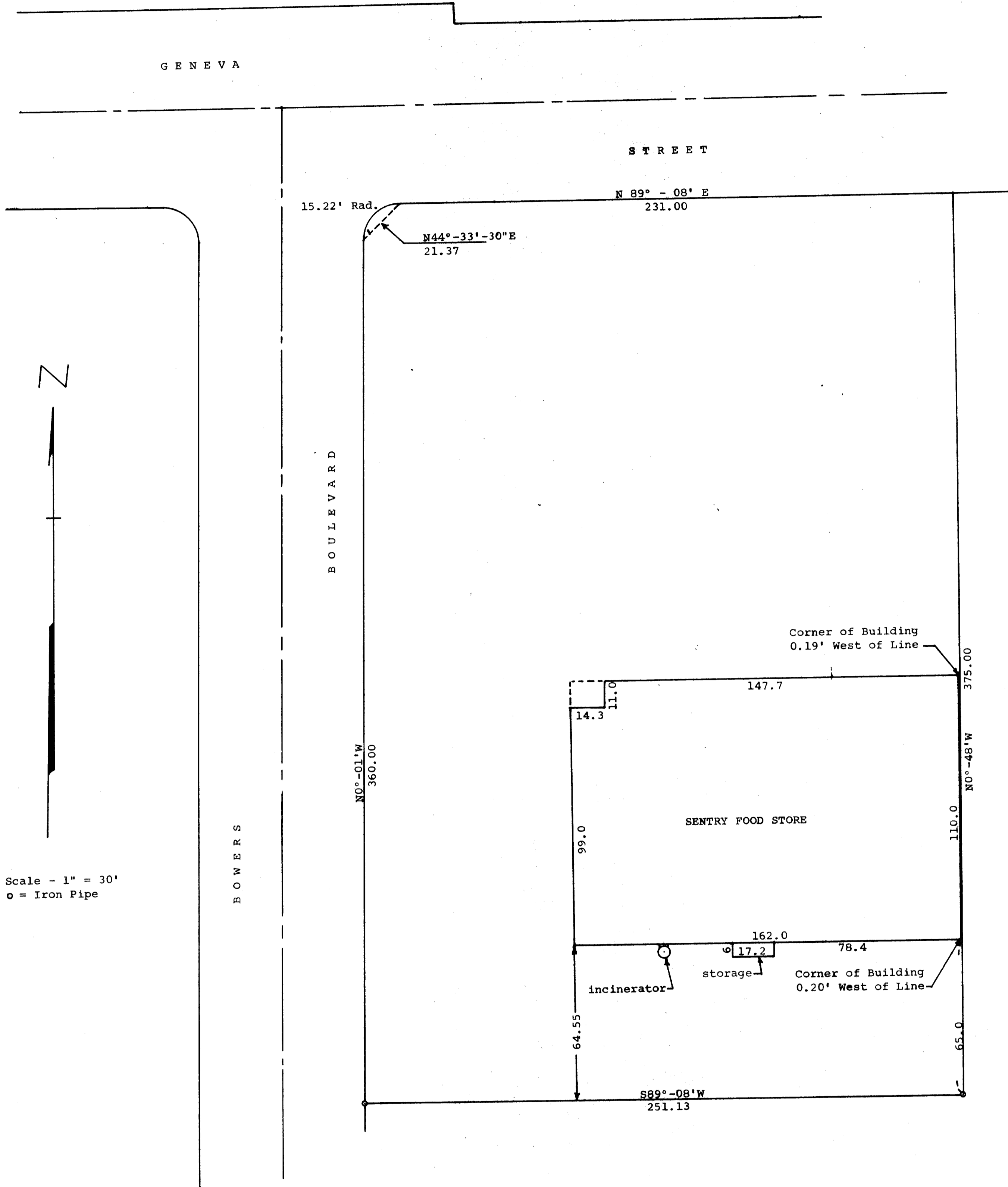


GEORGE T. DUNHAM
SURVEYING & SUBDIVIDING
DELAVAN, WISCONSIN



Scale - 1" = 30'
o = Iron Pipe

STATE OF WISCONSIN) SS
WALWORTH COUNTY)
I, George T. Dunham, Surveyor, certify that I have surveyed the property described as follows,
A parcel of land located in Block 9 of Allynhurst Subdivision, City of Delavan, Walworth County, Wisconsin, described as follows, to-wit:
Beginning at the concrete monument located on the south line of Geneva Street at the northwest corner of said Block 9; thence N 89° - 08' E along the north line of said Block 9, 231.00 feet; thence S 0° - 48' E parallel to the east line of said Block 9, 375.00 feet; thence S 89° - 08' W parallel to the north line of said Block 9, 251.13 feet to the west line of said Block 9; thence N 0° - 01' W along said west line 360.00 feet to a concrete monument; thence northeasterly along the arc of a curve with a radius of 15.22 feet to a concrete monument located N 44° - 33' - 30" E 21.37 feet from the last mentioned concrete monument and the place of beginning.
and that the above plat is an accurate survey and a true representation thereof and correctly shows the exterior boundary lines and location of the building on said property and the correct measurements thereof.
May 27, 1966

George T. Dunham
George T. Dunham, Surveyor