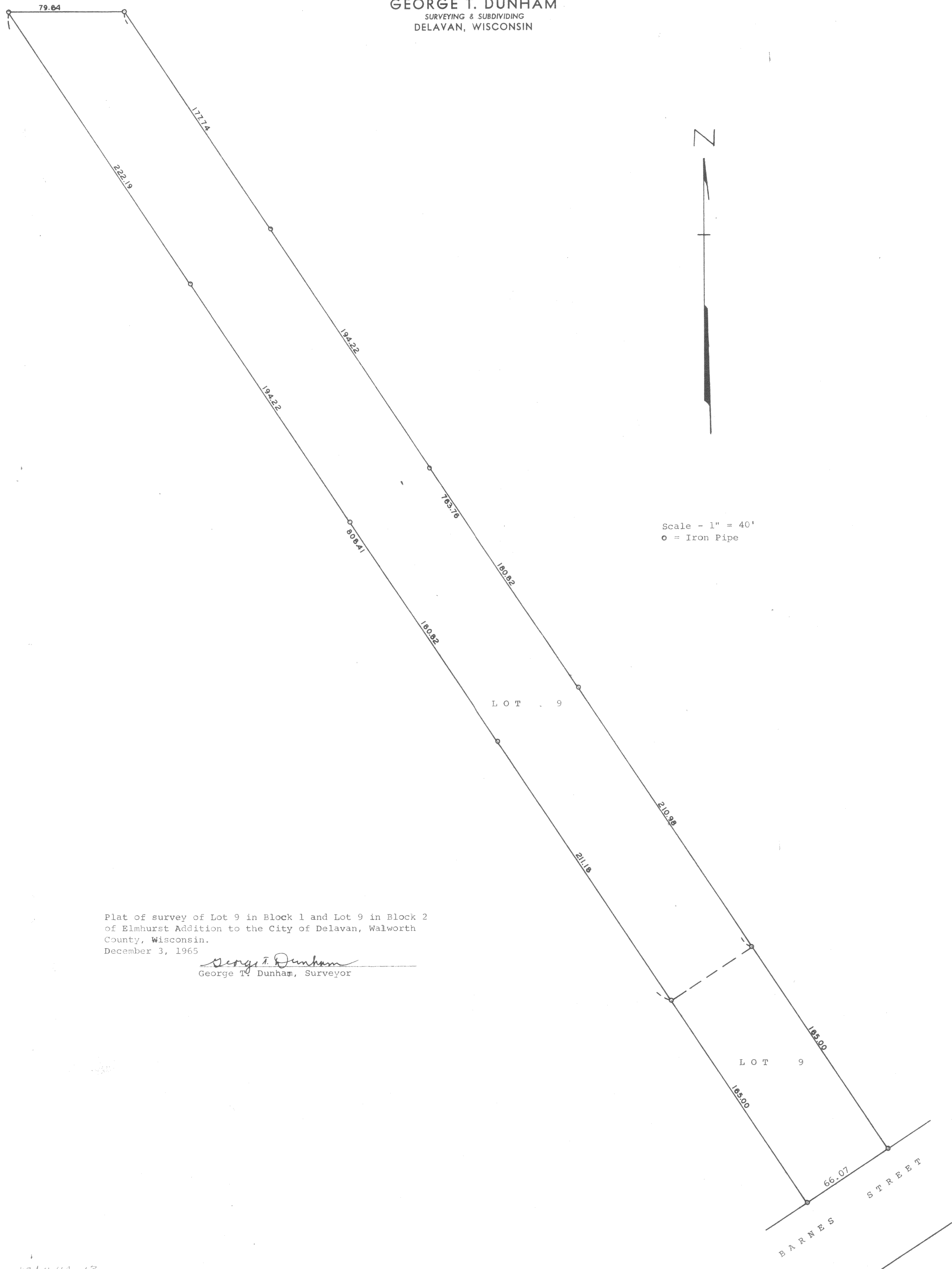


GEORGE T. DUNHAM  
SURVEYING & SUBDIVIDING  
DELAVAN, WISCONSIN



Scale - 1" = 40'  
o = Iron Pipe

Plat of survey of Lot 9 in Block 1 and Lot 9 in Block 2  
of Elmhurst Addition to the City of Delavan, Walworth  
County, Wisconsin.  
December 3, 1965

*George T. Dunham*  
George T. Dunham, Surveyor

XEA-4A, 13  
K & E 10-5155-250-B-64

XEA-4A and XEA-13

2-247