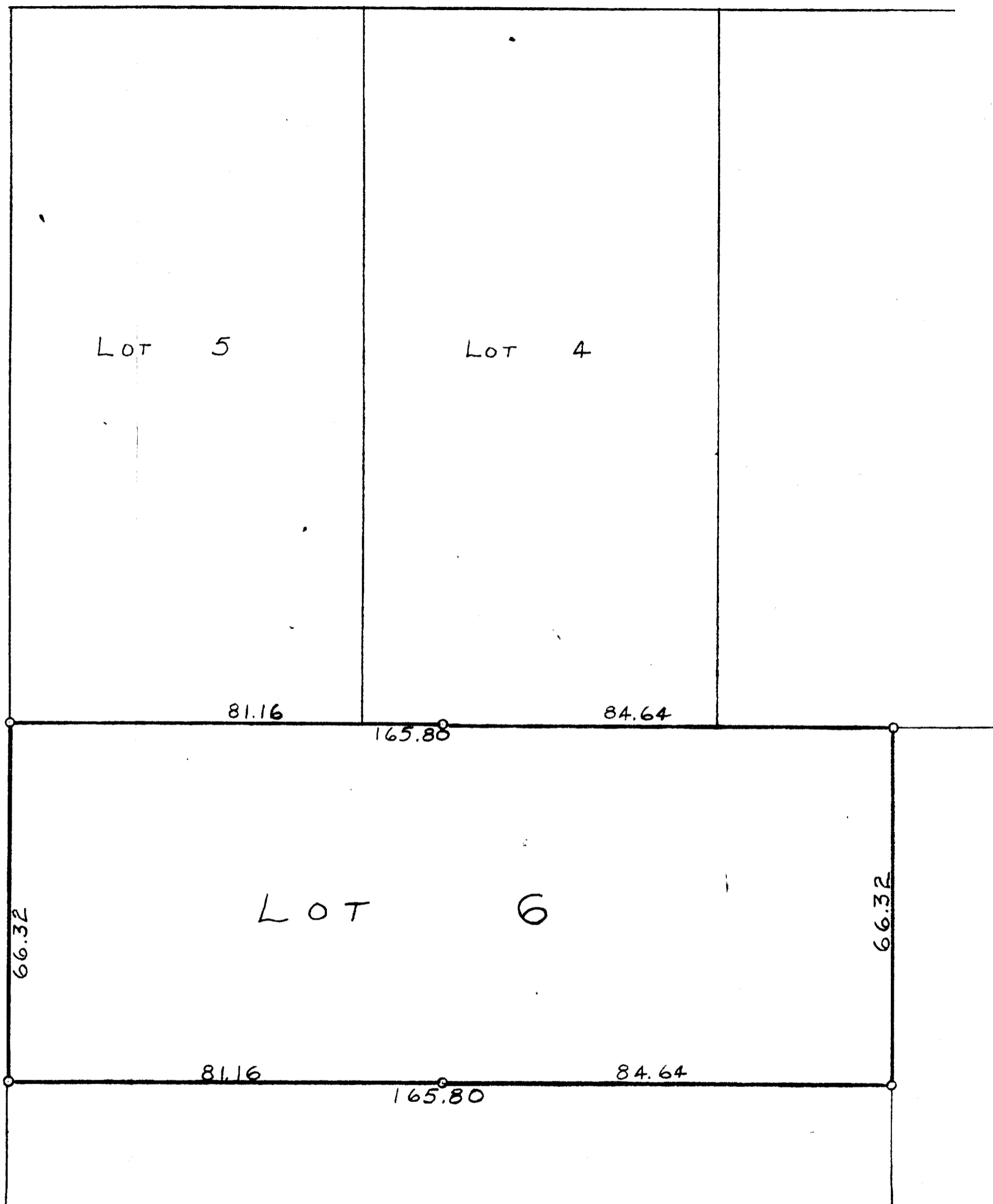




SCALE-1"=20'
O=IRON PIPE

STREET

FOURTH



PLAT OF SURVEY OF LOT 6, BLOCK 3, PASSAGE, ARAM, AND
DOWNIE ADDITION TO THE CITY OF DELAVAN, WALWORTH
COUNTY, WISCONSIN
SEPT. 20, 1954

George T. Dunham
GEORGE T. DUNHAM, SURVEYOR
DELAVAN, WISCONSIN

2-20