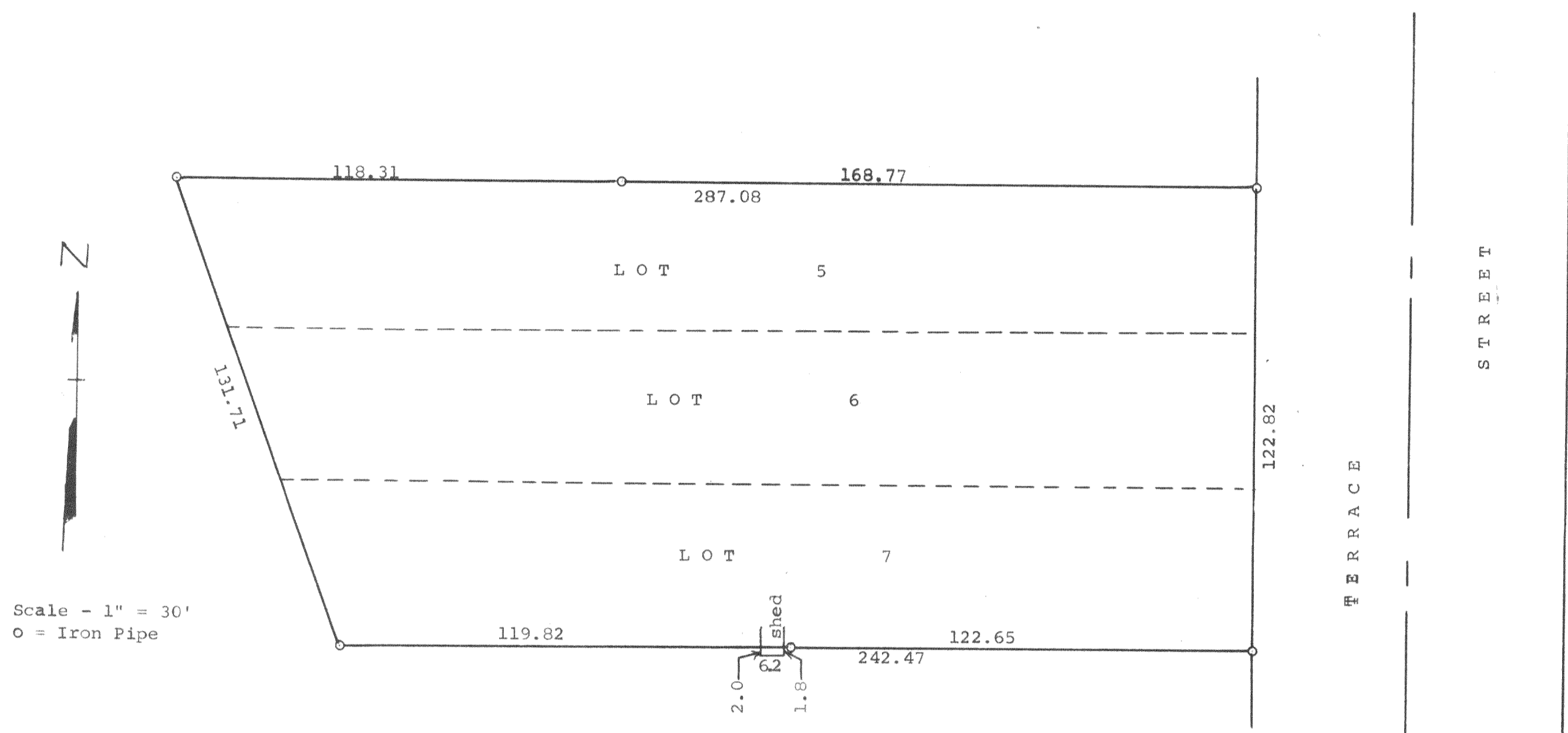


GEORGE T. DUNHAM  
SURVEYING & SUBDIVIDING  
DELAVAN, WISCONSIN



Plat of survey of Lots 5, 6, & 7 of L. E. Downie's  
Addition to the City of Delavan, Walworth County, Wis.  
February 5, 1963

*George T. Dunham*  
George T. Dunham, Surveyor