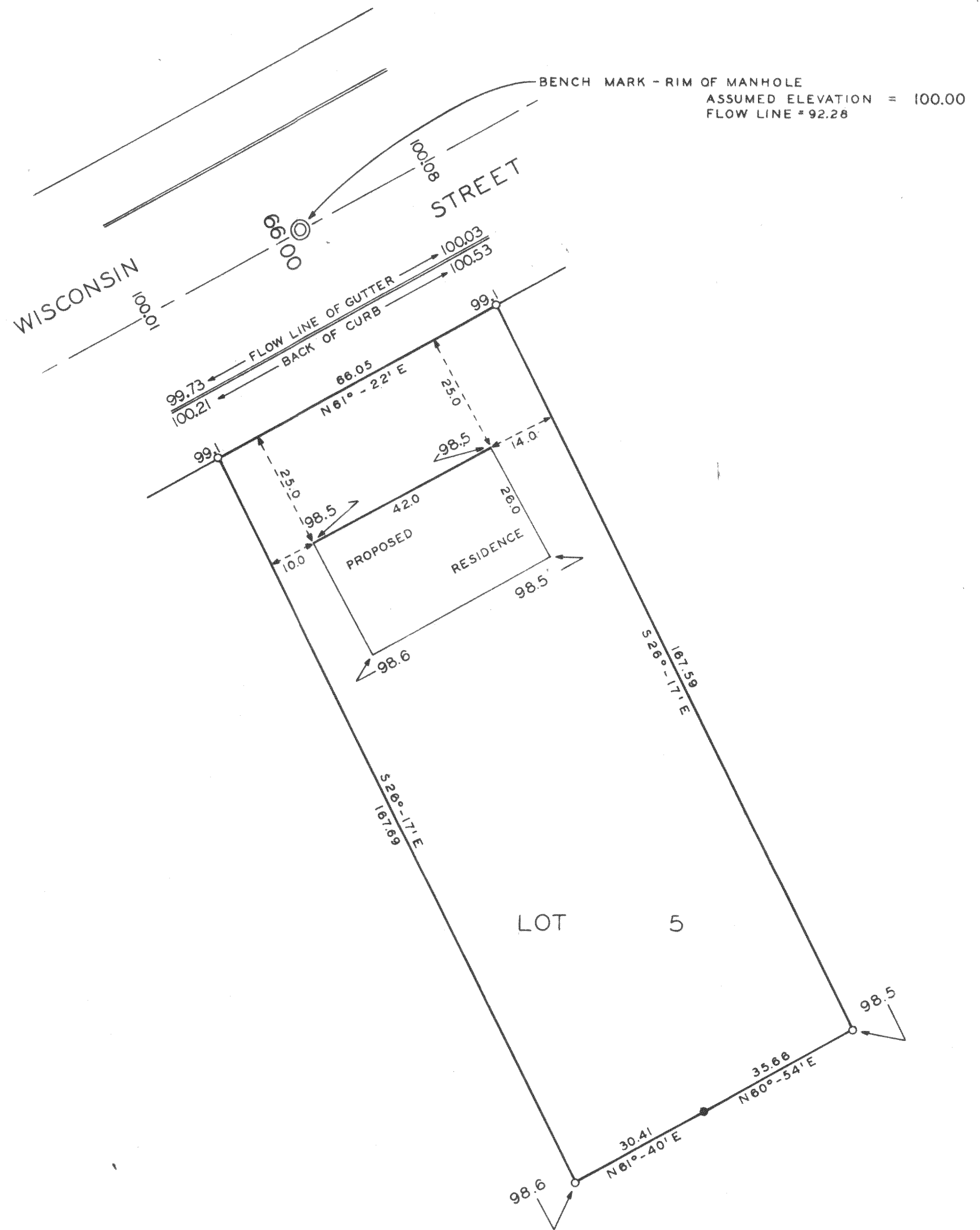


DUNHAM & RASMUSSEN  
 SURVEYING & ENGINEERING  
 DELAVAN, WISCONSIN



SCALE ~ 1" = 20'  
 O = IRON PIPE  
 ● = CONCRETE MONUMENT  
 ⊙ = MANHOLE

Plot Plan for a proposed residence to be located on Lot 5 of Block 1 in Sunny Side Subdivision, City of Delavan, Walworth County, Wisconsin. July 10, 1961

*George T. Dunham*  
 George T. Dunham, Surveyor