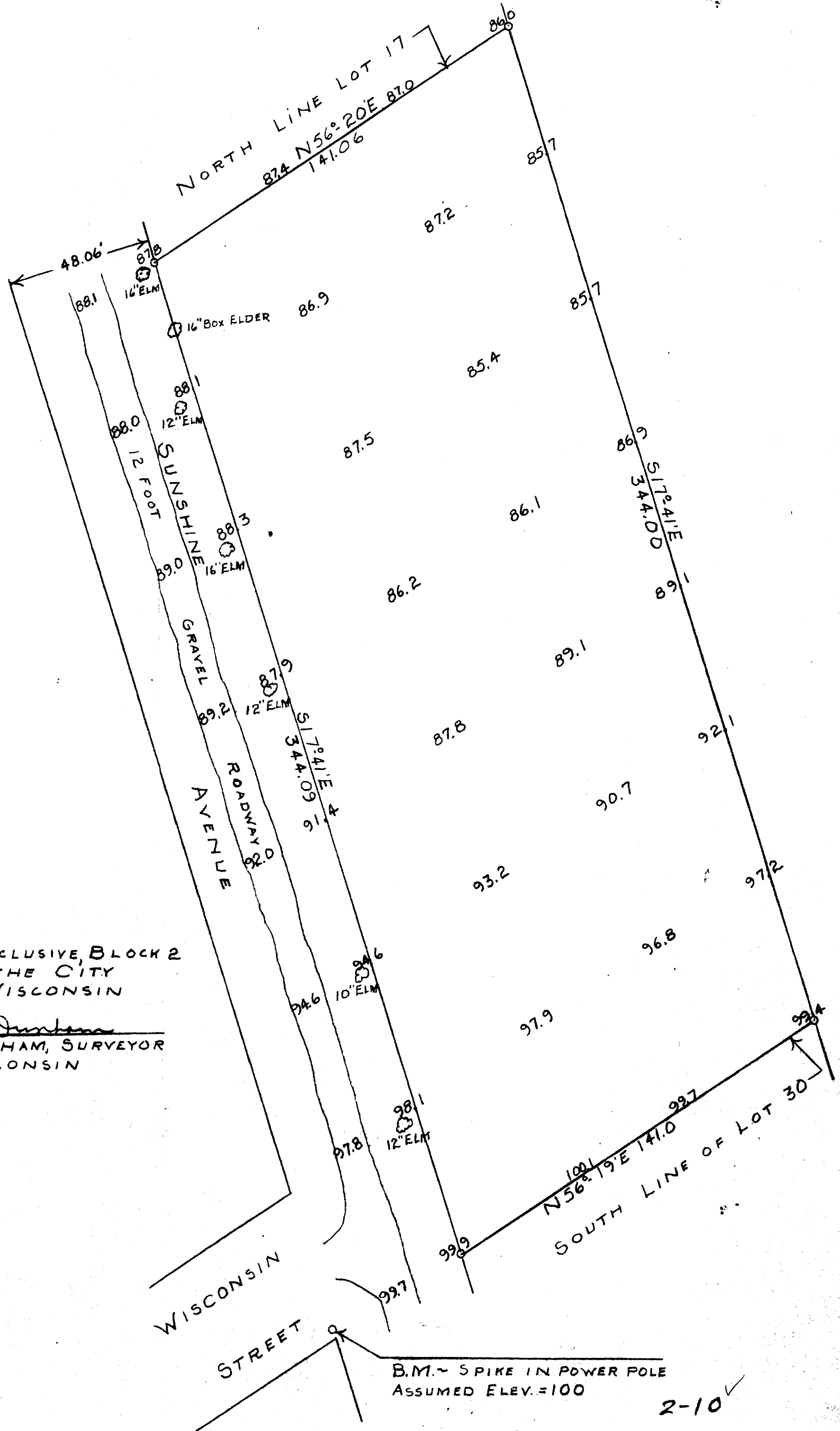




SCALE 1"=30'
O=IRON PIPE

PLAT OF SURVEY OF LOTS 17-30 INCLUSIVE, BLOCK 2
DELAVIEW SUBDIVISION LOCATED IN THE CITY
OF DELAVAN, WALWORTH COUNTY, WISCONSIN
AUGUST 23, 1955

George T. Dunham
GEORGE T. DUNHAM, SURVEYOR
DELAVAN, WISCONSIN



B.M. - SPIKE IN POWER POLE
ASSUMED ELEV. = 100

2-10