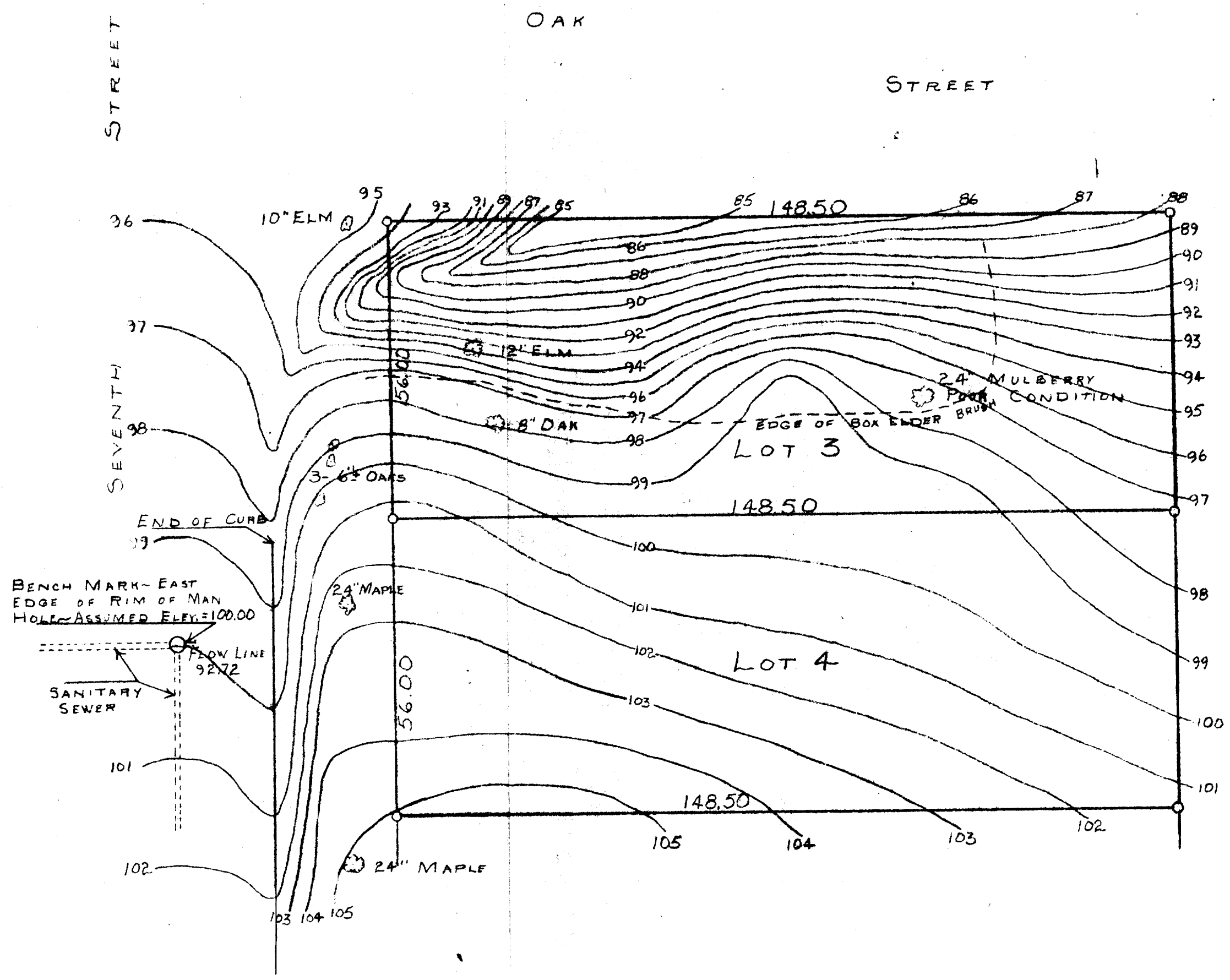


N



SCALE - 1" = 20'
O = IRON PIPE



BENCH MARK - EAST
EDGE OF RIM OF MAN
HOLE - ASSUMED ELEV. = 100.00

FLOW LINE
92.72
SANITARY
SEWER

PLAT OF SURVEY OF LOTS 3 AND 4 OF KATIE A. LATHROP'S
 SECOND ADDITION TO THE CITY OF DELAYAN, WALWORTH
 COUNTY WISCONSIN
 JUNE 5, 1953

George T. Dunham
 GEORGE T. DUNHAM, SURVEYOR
 DELAYAN, WISCONSIN

XLA 2-1A

2-1