

GENEVA

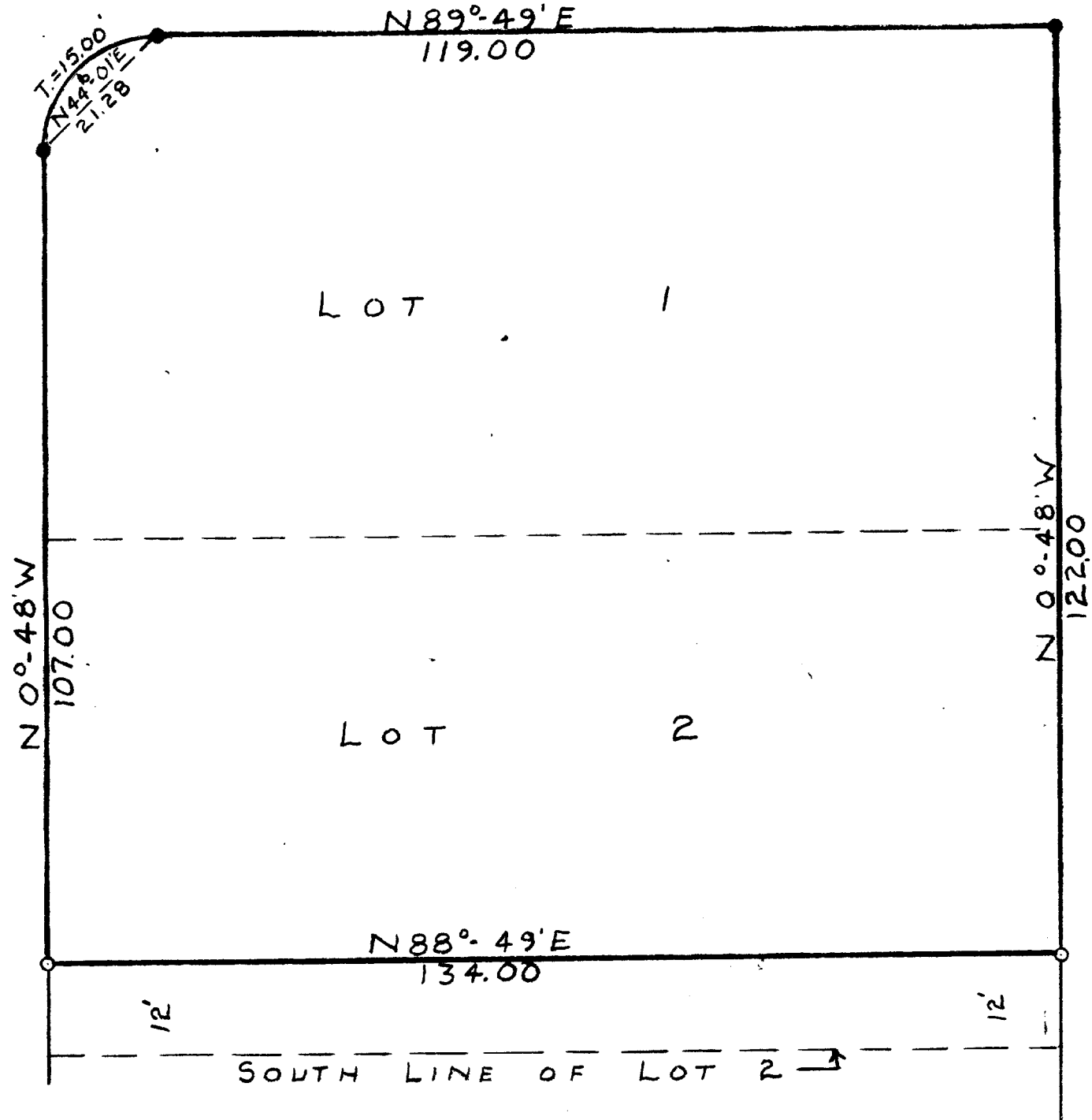
STREET

N

SCALE - 1" = 20'  
O = IRON PIPE  
● = CONC. MONU.

PARK

AVENUE



PLAT OF SURVEY OF LOTS 1 AND 2, BLOCK 2 OF SOUTH PARK SUBDIVISION  
LOCATED IN THE CITY OF DELAVAN, WALWORTH COUNTY, WISCONSIN EXCEPTING  
THEREFROM THE SOUTH 12.00 FEET OF SAID LOT 2.  
APRIL 6, 1956

*George T. Dunham*  
GEORGE T. DUNHAM, SURVEYOR 2-58  
DELAVAN, WISCONSIN