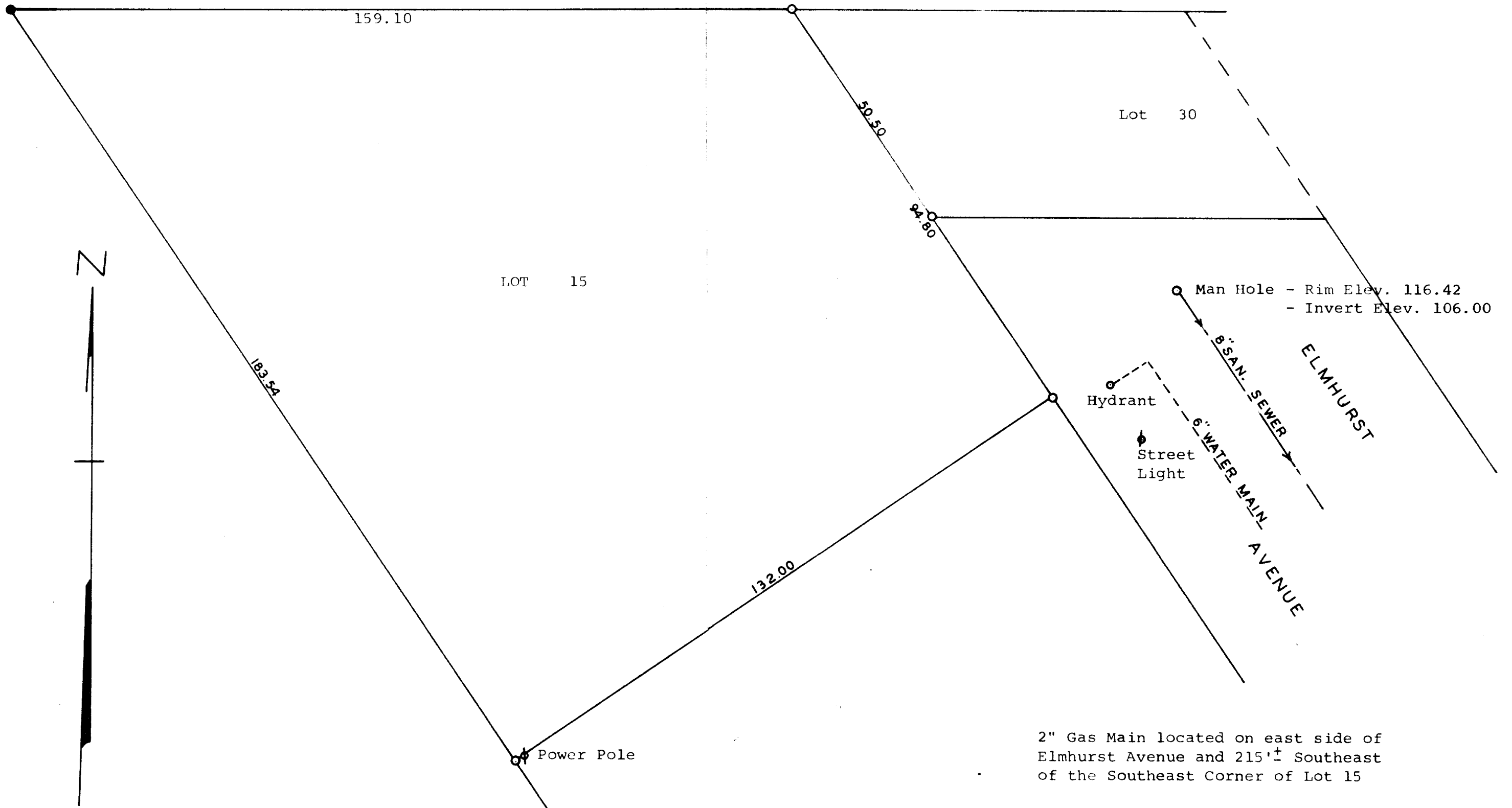


GEORGE T. DUNHAM  
 SURVEYING & SUBDIVIDING  
 DELAVAN, WISCONSIN



Scale - 1" = 20'  
 ○ = Iron Pipe  
 ● = Concrete Monument

Plat of survey of Lot 15 of Bennings Subdivision located  
 in the City of Delavan, Walworth County, Wisconsin.  
 July 10, 1971

*George T. Dunham*  
 George T. Dunham, Surveyor

