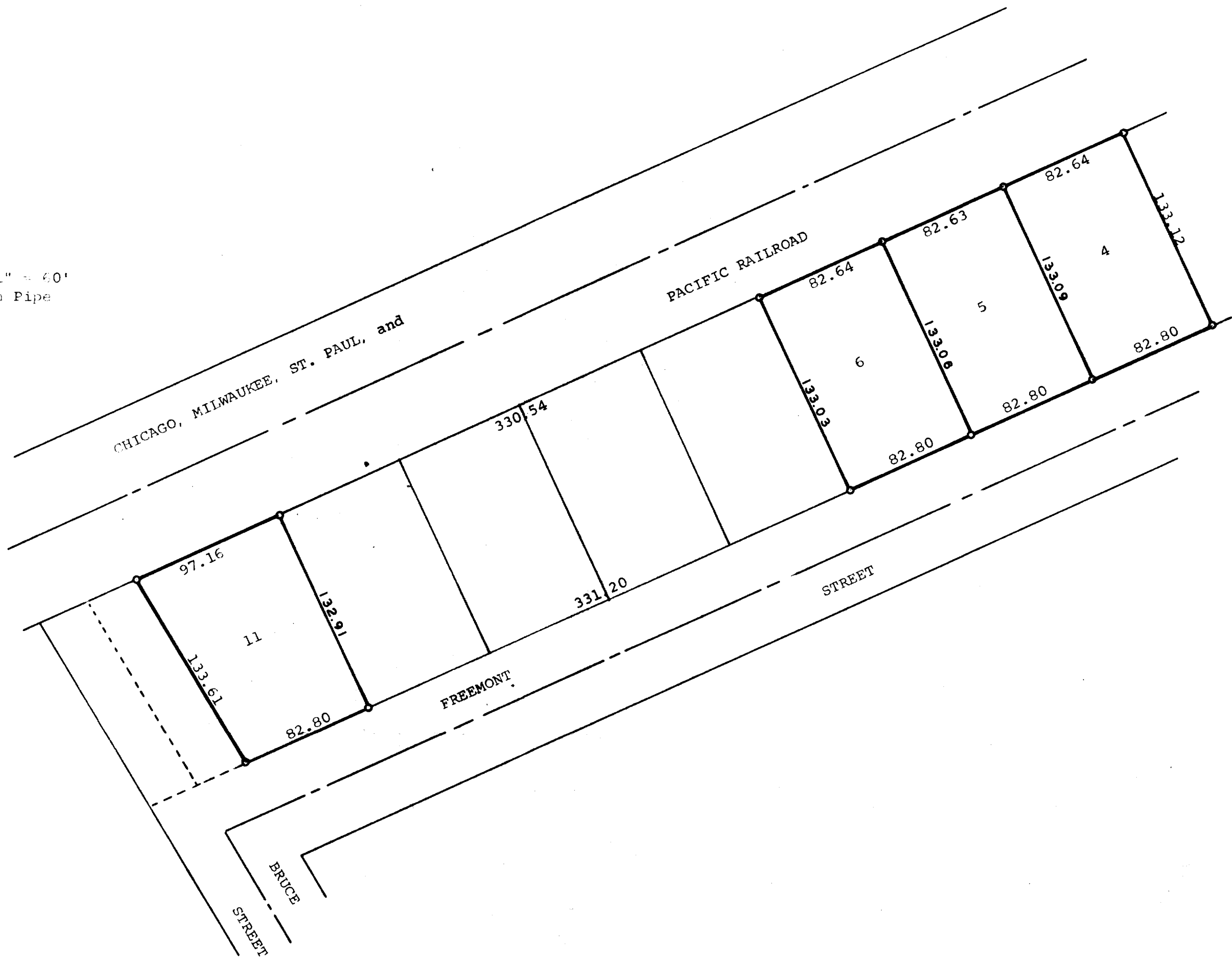


GEORGE T. DUNHAM
SURVEYING & SUBDIVIDING
DELAVAN, WISCONSIN

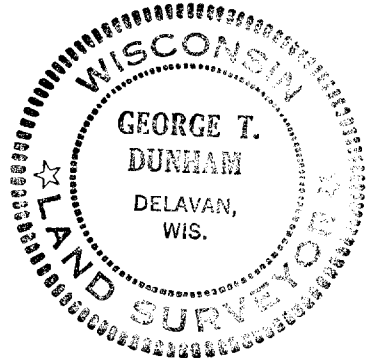


Scale - 1" = 60'
● = Iron Pipe



Plat of survey of Lots 4, 5, 6, and 11 in Block 23,
John Bruces Addition to the Village of Darien, Walworth
County, Wisconsin.
November 15, 1972

George T. Dunham
George T. Dunham, Surveyor



0A - 2A
1 - 3A
1 - 3B