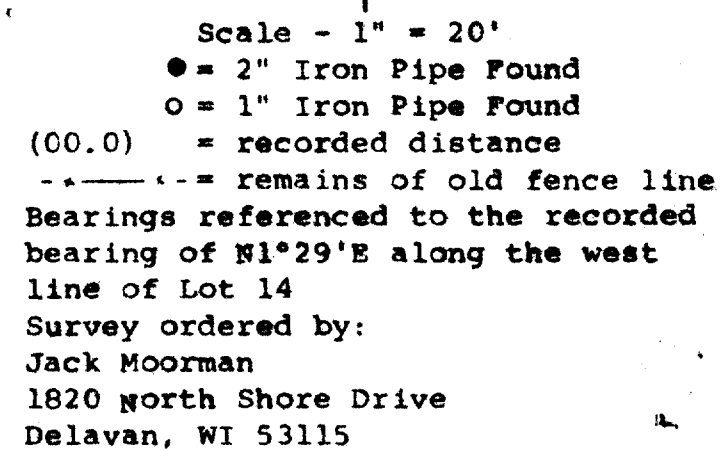


**SURVEYING & SUBDIVIDING  
DELAN, WISCONSIN 53115**



A circular seal for a Wisconsin Land Surveyor. The outer ring contains the text "WISCONSIN" at the top and "LAND SURVEYOR" at the bottom, separated by two five-pointed stars. Inside this ring, the text "GEORGE T. DUNHAM" is at the top, "S-306" is in the center, and "DELAVER WIS." is at the bottom. The entire seal is surrounded by a decorative border of small dots.

