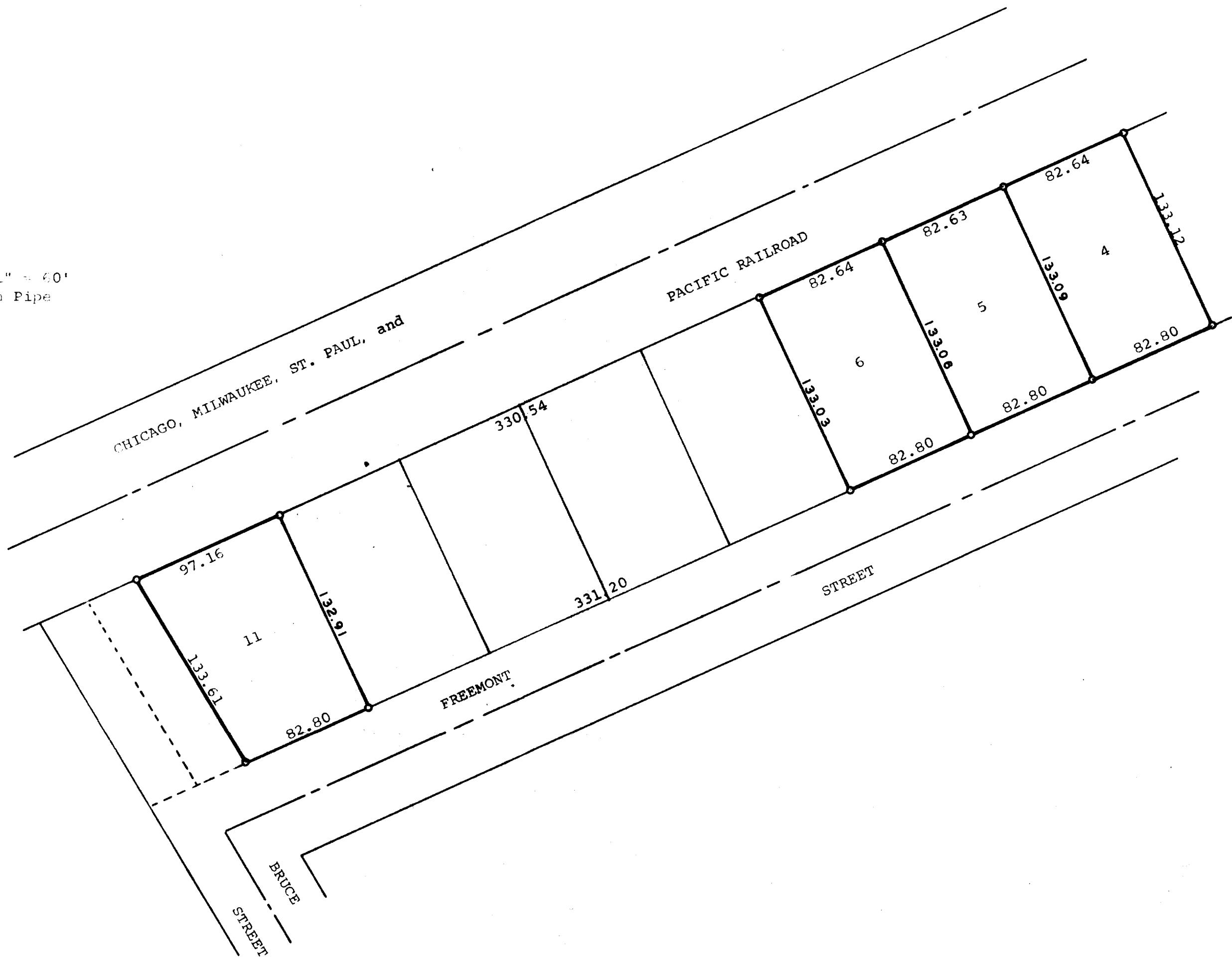


GEORGE T. DUNHAM
 SURVEYING & SUBDIVIDING
 DELAVAN, WISCONSIN

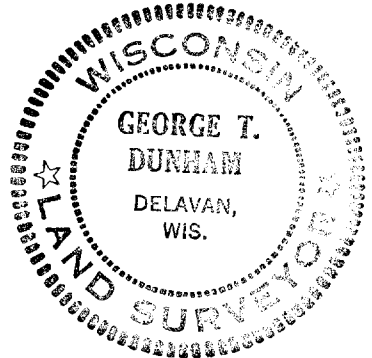


Scale - 1" = 60'
 ● = Iron Pipe



Plat of survey of Lots 4, 5, 6, and 11 in Block 23,
 John Bruces Addition to the Village of Darien, Walworth
 County, Wisconsin.
 November 15, 1972

George T. Dunham
 George T. Dunham, Surveyor



0A - 2A
 1 - 3A
 1 - 3B