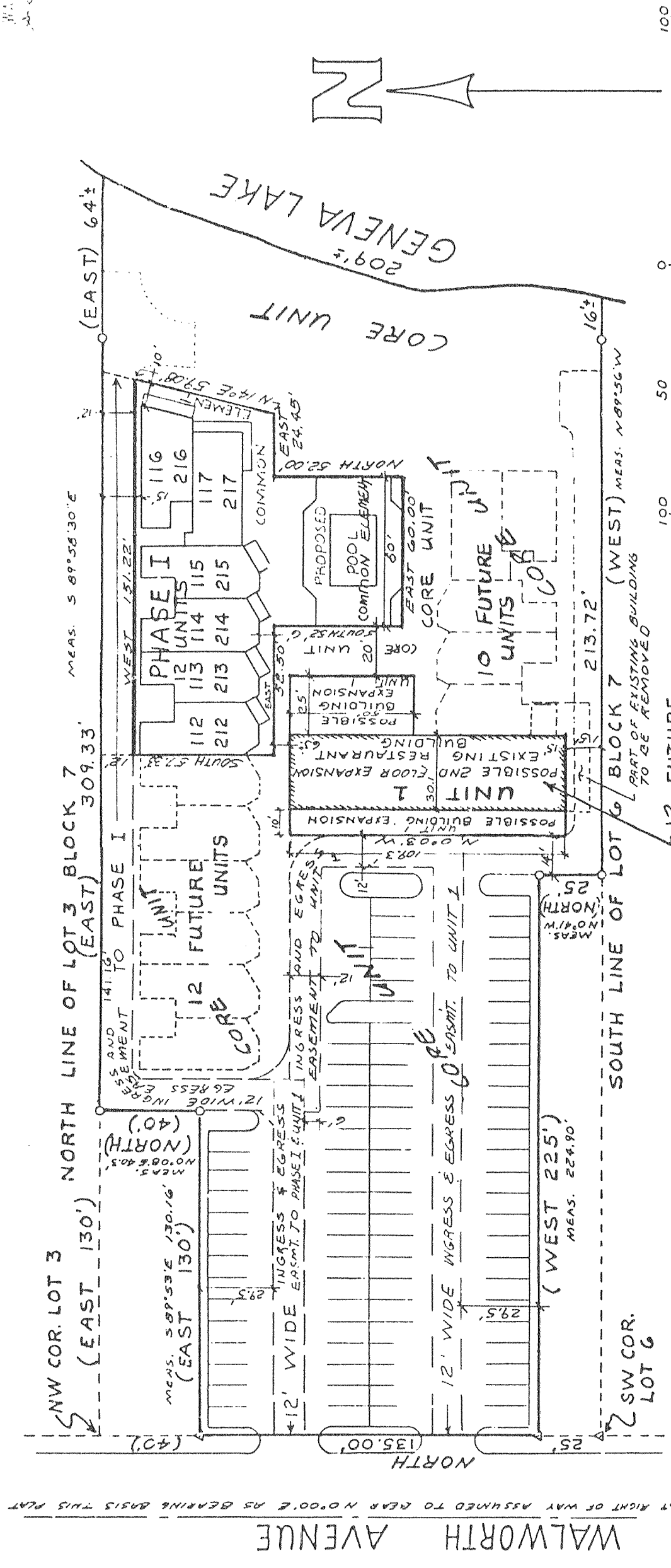


THIS DOCUMENT DRAFTED BY: FARRIS HANSEN & ASSOCIATES, INC. ELKHORN WISCONSIN PROJECT # 2557

171210

BAY SHORE RESORT CONDOMINIUM

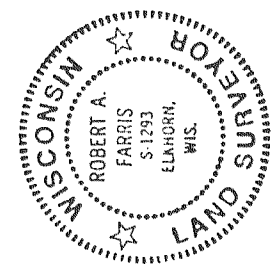
NOV 21 PM 3 59
3:59 PM
NOV 21 1988
FARRIS HANSEN & ASSOCIATES, INC.
ELKHORN, WISCONSIN



Note: The configuration of parking, drives, and future units outside Phase I is subject to change.

THE PURPOSE OF THIS AMENDMENT IS TO SEPARATE UNIT 1 FROM THE CORE UNIT IN ACCORDANCE WITH THE PROVISIONS OF 703.13(7) AND THE CONDOMINIUM DECLARATION. I HEREBY CERTIFY THIS PLAT TO BE AN ACCURATE REPRESENTATION OF UNIT 1 WITHIN THE CORE UNIT TO THE BEST OF MY PROFESSIONAL KNOWLEDGE AND BELIEF.

DATED: NOV. 5, 1988



NOTE: THESE DRAWINGS REPRESENT PROPOSED CONSTRUCTION WHICH HAS NOT YET BEGUN AS OF THE DATE OF THIS DOCUMENT. PROPERTY SURVEY, DESIGNATION OF UNITS AND EXPANSION AREA BAY SHORE RESORT CONDOMINIUM - WALWORTH COUNTY, WISCONSIN