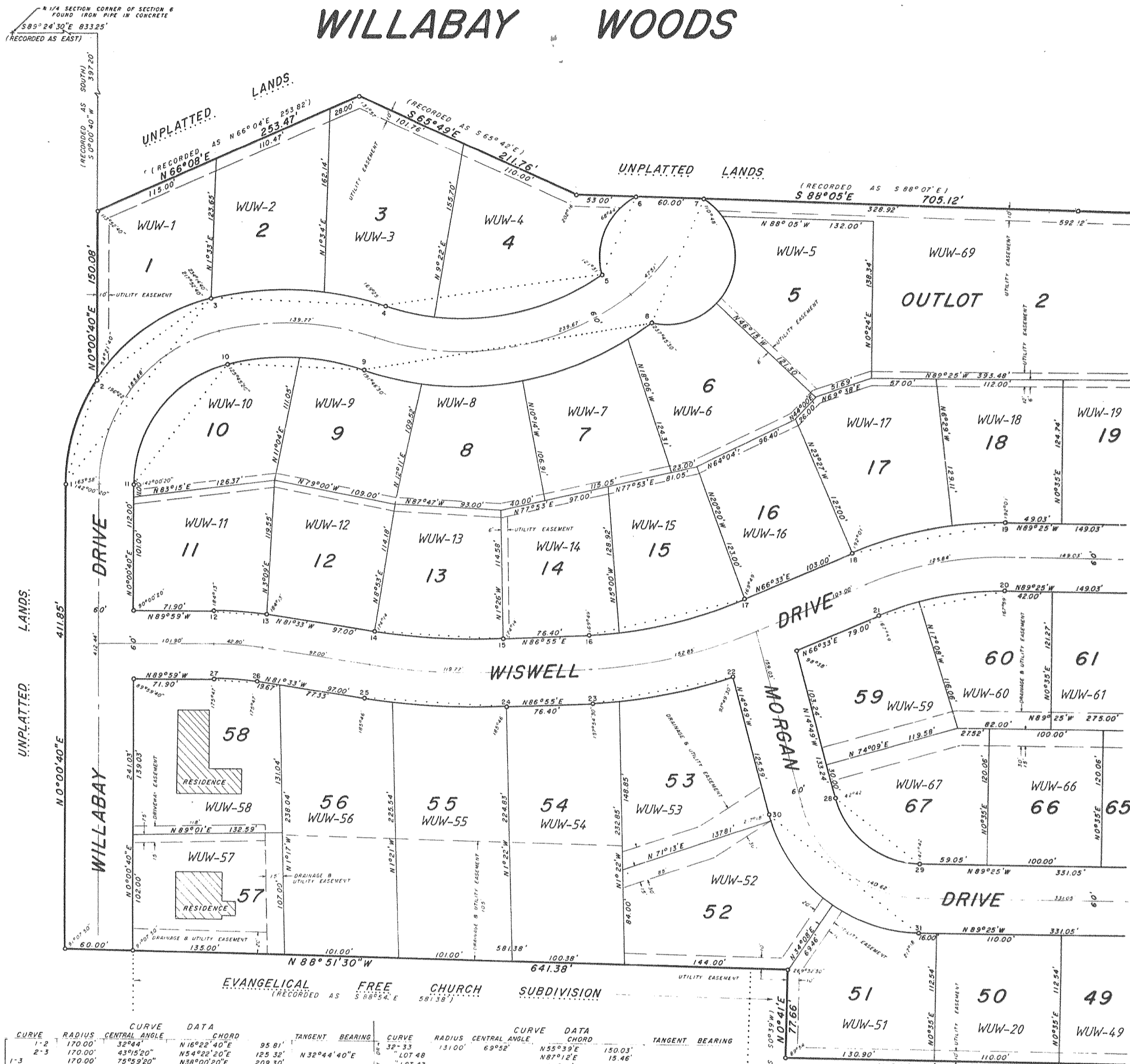


WILLABAY WOODS



CURVE	RADIUS	CENTRAL ANGLE	CHORD	TANGENT	BEARING	CURVE	RADIUS	CENTRAL ANGLE	CHORD	TANGENT	BEARING
1-2	170.00'	32°44'	116.22'	95.81'	N16°22'40"E	32-33	131.00'	69°52'	150.03'	N55°39'E	150.03'
2-3	170.00'	43°15'20"	125.32'	125.32'	N32°44'40"E	LOT 48			15.46'	N87°12'E	15.46'
3-4	170.00'	75°59'20"	209.30'	209.30'	N38°00'20"E	LOT 47			86.09'	N64°38'E	86.09'
4-5	140.00'	75°59'20"	172.36'	172.36'	N38°00'20"E	LOT 46			58.11'	N33°05'E	58.11'
5-6	110.00'	75°59'20"	135.43'	135.43'	N38°00'20"E	LOT 45			115.67'	N55°39'E	115.67'
6-7	276.40'	32°30'	154.69'	154.69'	S87°45'E	LOT 20	101.00'	69°52'	81.31'	N55°39'E	81.31'
7-8	276.40'	32°30'	100.11'	100.11'	S87°45'E	LOT 21	71.00'	69°52'	127.35'	S79°40'E	127.35'
8-9	216.40'	32°30'	59.02'	59.02'	S87°45'E	LOT 22	376.00'	19°30'	94.47'	S82°12'E	94.47'
9-10	246.40'	32°30'	63.72'	63.72'	S87°45'E	LOT 23	346.00'	19°30'	33.24'	S72°07'E	33.24'
10-11	216.40'	32°30'	58.61'	58.61'	S87°45'E	LOT 24	316.00'	19°30'	12.13'	S79°40'E	12.13'
11-12	275.00'	56°03'	258.42'	258.42'	N80°28'30"E	LOT 25	500.00'	125°48'	89.02'	S10°43'E	89.02'
12-13	275.00'	56°03'	52.56'	52.56'	S79°17'E	LOT 26	130.00'	23°46'	45.48'	S68°04'W	45.48'
13-14	246.40'	32°30'	99.99'	99.99'	N88°07'E	LOT 27	184.00'	74°58'	223.94'	S58°28'W	223.94'
14-15	246.40'	32°30'	25.43'	25.43'	N88°13'30"E	LOT 28			45.48'	S68°04'W	45.48'
15-16	246.40'	32°30'	230.23'	230.23'	N55°06'E	LOT 29			92.14'	S49°15'W	92.14'
16-17	216.40'	32°30'	194.10'	194.10'	N80°28'30"E	LOT 30	154.00'	74°58'	100.71'	S16°52'W	100.71'
17-18	216.40'	32°30'	43.95'	43.95'	N81°40'E	LOT 31	124.00'	74°58'	187.43'	S38°28'W	187.43'
18-19	60.00'	77°28'	153.86'	153.86'	S79°22'E	LOT 32	736.00'	11°42'	150.92'	S38°28'W	150.92'
19-20	60.00'	161°36'	75.08'	75.08'	N23°11'E	LOT 33	706.00'	11°42'	150.03'	S4°52'E	150.03'
20-21	60.00'	161°36'	118.46'	118.46'	N22°43'E	LOT 34	48.47'	11°42'	143.92'	S4°52'E	143.92'
21-22	320.80'	8°26'	59.79'	59.79'	N73°38'E	LOT 35	44.45'	11°44'	38.16'	S0°59'W	38.16'
22-23	290.80'	8°26'	22.86'	22.86'	N73°38'E	LOT 36	705.84'	11°43'	144.09'	S10°43'E	144.09'
23-24	260.80'	8°26'	17.18'	17.18'	N73°38'E	LOT 37	735.84'	11°42'	150.00'	N75°57'E	150.00'
24-25	565.00'	11°32'	42.76'	42.76'	N73°38'E	LOT 38	190.00'	74°52'	230.98'	N75°57'E	230.98'
25-26	565.00'	11°32'	38.35'	38.35'	N73°38'E	LOT 39			51.79'	N68°02'E	51.79'
26-27	595.00'	11°32'	113.54'	113.54'	N73°38'E	LOT 40			78.47'	N48°22'E	78.47'
27-28	625.00'	11°32'	119.97'	119.97'	N73°38'E	LOT 41			80.74'	N24°11'E	80.74'
28-29	625.00'	11°32'	24.72'	24.72'	N73°38'E	LOT 42	160.00'	74°52'	35.87'	N6°30'E	35.87'
29-30	400.00'	20°22'	114.79'	114.79'	N73°38'E	LOT 43			194.51'	N38°31'E	194.51'
30-31	430.00'	20°22'	126.50'	126.50'	N73°38'E	LOT 44			195.69'	N35°02'W	195.69'
31-32	460.00'	20°22'	23.95'	23.95'	N73°38'E	LOT 45			52.27'	N 89°25'W	52.27'
32-33	460.00'	20°22'	137.41'	137.41'	N73°38'E	LOT 46			84.71'	N32°10'W	84.71'
33-34	330.00'	24°02'	90.90'	90.90'	N73°38'E	LOT 47			69.59'	N59°03'W	69.59'
34-35	330.00'	24°02'	47.12'	47.12'	N73°38'E	LOT 48			160.33'	N35°02'W	160.33'
35-36	300.00'	24°02'	124.92'	124.92'	N73°38'E	LOT 49			124.96'	N 89°25'W	124.96'
36-37	270.00'	24°02'	36.89'	36.89'	N73°38'E	LOT 50			112.91'	N68°02'E	112.91'
37-38	270.00'	24°02'	76.09'	76.09'	N73°38'E	LOT 51			100.93'	N59°03'W	100.93'
38-39	108.00'	14°36'	52.07'E	52.07'E	N73°38'E	LOT 52			60.33'	N35°02'W	60.33'
39-40	138.00'	14°36'	130.89'	130.89'	N73°38'E	LOT 53			124.96'	N 89°25'W	124.96'
40-41			167.25'	167.25'	N73°38'E	LOT 54			119.78'	N68°02'E	119.78'
41-42			5.46'	5.46'	N73°38'E	LOT 55			71.18'	N61°03'W	71.18'
42-43			91.68'	91.68'	N73°38'E	LOT 56			60.14'	N2°48'30"W	60.14'
43-44			19.62'	19.62'	N73°38'E	LOT 57			119.78'	N2°48'30"W	119.78'
44-45					N73°38'E	LOT 58			71.18'	N73°38'E	71.18'
45-46					N73°38'E	LOT 59			92.12'	N 89°14'30"E	92.12'

REVISIONS: 03/15/94

There are no objections to this plat with respect to Secs. 226, 15, 226, 16, 226, 20 and 226, 21 (1) and (2), Sections 9 of the County Planning Agency.

Certified this 5th day of September, 1978.

Robert A. Farris
 Department of Local Affairs & Development

DATED THIS 10th DAY of July, 1978
 REVISED THIS 20th DAY of August, 1978

Robert A. Farris
 ROBERT A. FARRIS RLS 1293

CAB. E. SLIDE 28