

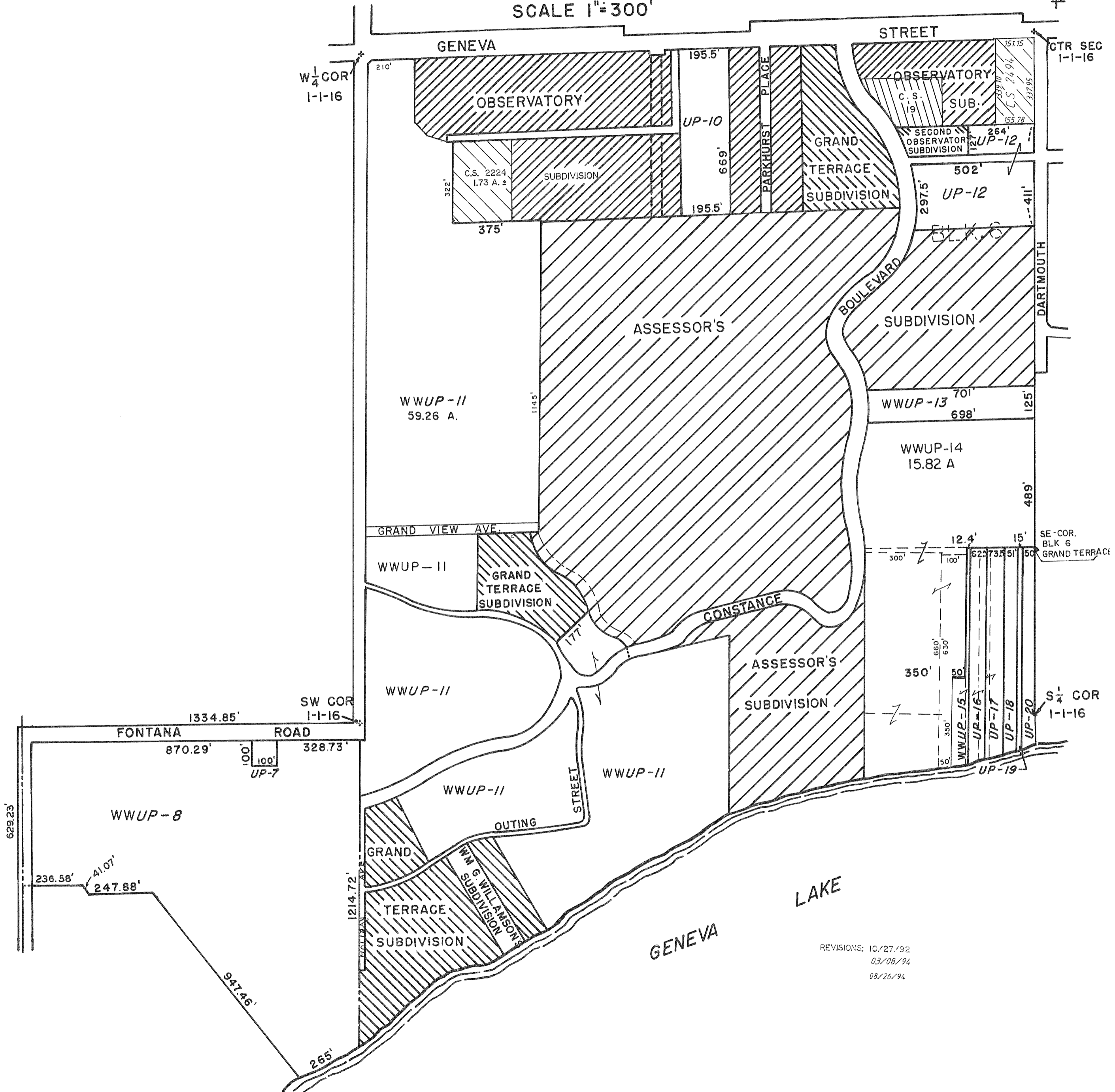
VILLAGE OF WILLIAMS BAY

SW 1/4 SECTION 1, T1N, R16E

PART OF FR E 1/2 NE 1/4 SECTION 11, T1N, R16E

FR NW 1/4 SECTION 12, T1N, R16E

SCALE 1"=300'



REVISIONS: 10/27/92
03/08/94
08/26/94