

# TRIPP LAKE ESTATES

BEING A PART OF THE NORTHWEST 1/4 OF THE  
NORTHEAST 1/4 OF SECTION 9, TOWN 4 NORTH  
RANGE 15 EAST, IN THE CITY OF WHITEWATER,  
WAL WORTH COUNTY WISCONSIN

APPROVING AGENCIES  
CITY OF WHITEWATER

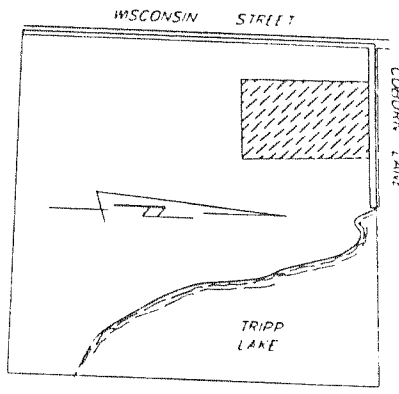
OBJECTING AGENCIES  
DEPT. OF ADMINISTRATION  
WAL WORTH COUNTY PLANNING, ZONING  
AND SANITATION DEPARTMENT

ZONED R-1  
OWNER: FALLS BAPTIST CHURCH  
TAX KEY NO. WUP-290/J

PROPERTY CONTAINS 12.93 ACRES EXCLUSIVE  
OF 47' WIDE EASEMENT

BEARINGS ARE REFERENCED TO THE NORTH  
LINE OF THE NORTHEAST 1/4 OF SECTION  
9-4-15 AND IS ASSUMED AS N86°58'00"E  
PER C.S.M. NO. 2685

- FOUND 6" CONCRETE MON/W/BRASS CAP
  - FOUND 1" IRON PIPE
  - FOUND 3/4" REBAR
  - SET 2"X30" IRON PIPE WEIGHING  
3.65 LBS./LIN. FT.
- ALL OTHER CORNERS ARE TX24"  
IRON PIPES SET WEIGHING  
13 LBS./LIN. FT.



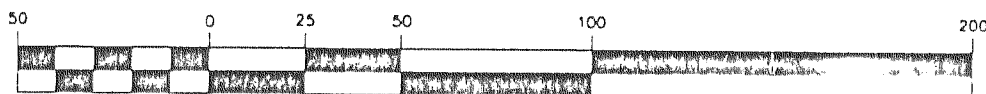
LOT	RADIUS	LENGTH	CHORD	BEARING	DELTA
1	145.00'	68.98'	68.33'	N45°03'07"W	27°15'18"
1	130.00'	126.22'	121.32'	N28°51'49"W	55°37'54"
2	145.00'	69.45'	68.79'	N15°42'13"W	27°26'30"
4	60.00'	62.83'	60.00'	S28°01'02"W	60°00'00"
5	60.00'	43.40'	42.46'	S22°42'24"E	41°26'52"
6	60.00'	50.84'	49.34'	S67°42'24"E	48°33'08"
7	60.00'	52.41'	50.76'	S62°59'42"E	50°07'40"
8	60.00'	41.84'	41.00'	N17°59'42"E	39°57'20"
9	60.00'	62.83'	60.00'	N31°58'58"W	60°00'00"
11	205.00'	79.95'	79.45'	N13°09'21"W	22°20'46"
13	205.00'	79.78'	78.69'	N35°23'38"W	22°07'48"
14	205.00'	36.57'	36.52'	N51°34'03"W	10°13'44"
14	70.00'	67.97'	65.33'	N28°15'49"W	55°37'54"

MAIN CURVE DATA

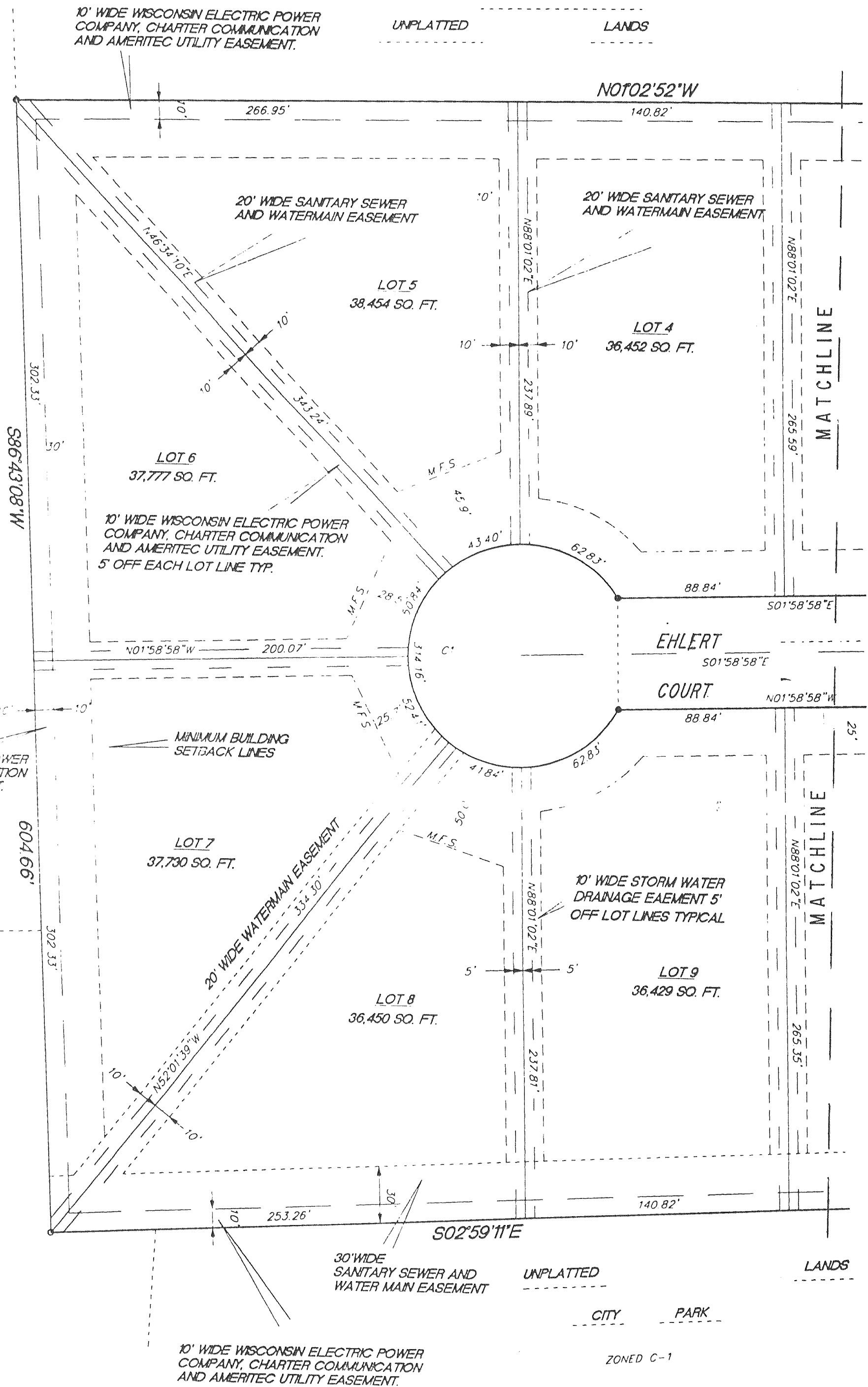
CURVE	LENGTH	RADIUS	CHORD	BEARING	DELTA	TANGENT BEARINGS
C1	314.16'	60.00'	60.00'	S88°01'02"W	300°00'00"	N58°01'02"E N61°58'58"W
C2	195.70'	188.35'	188.35'	S29°19'52"E	54°41'48"	N01°58'58"W N56°40'46"W
C3	167.08'	175.00'	160.79'	S29°19'52"E	54°41'48"	N01°58'58"W N56°40'46"W
C4	145.00'	145.00'	138.42'	S29°19'52"E	54°41'48"	N01°58'58"W N56°40'46"W
C5	67.97'	70.00'	65.33'	S28°51'49"E	55°37'54"	N56°40'46"W N01°02'52"W
C6	97.10'	100.00'	93.33'	S28°51'49"E	55°37'54"	N56°40'46"W N01°02'52"W
C7	126.22'	130.00'	121.32'	S28°51'49"E	55°37'54"	N56°40'46"W N01°02'52"W

MAPPING DATE: 04/04/00  
(NOTE: Matchline added for  
mapping purposes.)

GRAPHIC SCALE



( IN FEET )  
1 inch = 50 ft.



MATCHLINE

MATCHLINE

MATCHLINE