

CITY OF WHITEWATER MOUND PARK ACRES

A SUBDIVISION LOCATED NE, SE, SW, AND NW 1/4'S OF THE SE 1/4 AND IN THE SE 1/4 OF THE NE 1/4, ALL IN SECTION 6, T4N, R15E, CITY OF WHITEWATER, WALWORTH COUNTY, WISCONSIN.

AND INCLUDING A REPLAT OF LOTS 69 THROUGH 77 OF THE FIRST ADDITION TO BUCKINGHAM ESTATES, A REPLAT OF PARTS OF LOT 1 AND OF OUTLOTS 1 AND 2 OF CERTIFIED SURVEY MAP NO. 875, AND A REPLAT OF PART OF LOT 1 OF CERTIFIED SURVEY MAP NO. 1527

80 AUG 14 PM 4 08
LOIS M. JENSEN
REG. OF DEEDS
WALWORTH COUNTY, WI
Jensen Surveying 2330

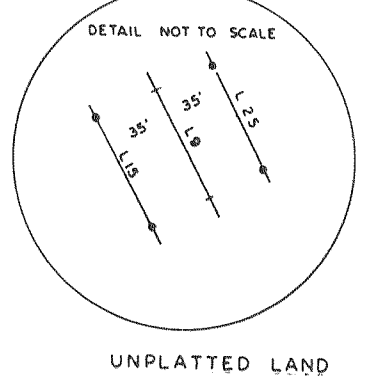
CURVE	DELTA	RADIUS	ARC	CHORD	CHORD BEG
1	20°42'44"	203.73	100.21	107.90	N 12°38'03"E
2	20°42'44"	203.73	100.21	107.90	N 12°38'03"E
3	20°42'44"	203.73	100.21	107.90	N 12°38'03"E
4	20°42'44"	203.73	100.21	107.90	N 12°38'03"E
5	20°42'44"	203.73	100.21	107.90	N 12°38'03"E
6	20°42'44"	203.73	100.21	107.90	N 12°38'03"E
7	20°42'44"	203.73	100.21	107.90	N 12°38'03"E
8	20°42'44"	203.73	100.21	107.90	N 12°38'03"E
9	20°42'44"	203.73	100.21	107.90	N 12°38'03"E
10	20°42'44"	203.73	100.21	107.90	N 12°38'03"E
11	21°44'20"	90.00	45.00	45.00	N 17°22'05"E
12	20°42'44"	203.73	100.21	107.90	N 12°38'03"E
13	31°42'00"	380.66	190.33	200.00	N 12°38'03"E
14	07°37'00"	77.00	38.50	40.00	N 12°38'03"E
15	20°42'44"	203.73	100.21	107.90	N 12°38'03"E
16	07°37'00"	77.00	38.50	40.00	N 12°38'03"E
17	24°30'00"	110.00	55.00	60.00	N 12°38'03"E
18	07°37'00"	77.00	38.50	40.00	N 12°38'03"E
19	07°37'00"	77.00	38.50	40.00	N 12°38'03"E
20	20°42'44"	203.73	100.21	107.90	N 12°38'03"E
21	07°37'00"	77.00	38.50	40.00	N 12°38'03"E
22	21°44'20"	90.00	45.00	45.00	N 17°22'05"E
23	20°42'44"	203.73	100.21	107.90	N 12°38'03"E
24	20°42'44"	203.73	100.21	107.90	N 12°38'03"E
25	20°42'44"	203.73	100.21	107.90	N 12°38'03"E
26	20°42'44"	203.73	100.21	107.90	N 12°38'03"E
27	20°42'44"	203.73	100.21	107.90	N 12°38'03"E
28	20°42'44"	203.73	100.21	107.90	N 12°38'03"E
29	20°42'44"	203.73	100.21	107.90	N 12°38'03"E
30	20°42'44"	203.73	100.21	107.90	N 12°38'03"E
31	20°42'44"	203.73	100.21	107.90	N 12°38'03"E
32	20°42'44"	203.73	100.21	107.90	N 12°38'03"E
33	20°42'44"	203.73	100.21	107.90	N 12°38'03"E
34	20°42'44"	203.73	100.21	107.90	N 12°38'03"E
35	20°42'44"	203.73	100.21	107.90	N 12°38'03"E
36	20°42'44"	203.73	100.21	107.90	N 12°38'03"E
37	20°42'44"	203.73	100.21	107.90	N 12°38'03"E
38	20°42'44"	203.73	100.21	107.90	N 12°38'03"E
39	20°42'44"	203.73	100.21	107.90	N 12°38'03"E
40	20°42'44"	203.73	100.21	107.90	N 12°38'03"E
41	20°42'44"	203.73	100.21	107.90	N 12°38'03"E
42	20°42'44"	203.73	100.21	107.90	N 12°38'03"E
43	20°42'44"	203.73	100.21	107.90	N 12°38'03"E
44	20°42'44"	203.73	100.21	107.90	N 12°38'03"E
45	20°42'44"	203.73	100.21	107.90	N 12°38'03"E
46	20°42'44"	203.73	100.21	107.90	N 12°38'03"E
47	20°42'44"	203.73	100.21	107.90	N 12°38'03"E
48	20°42'44"	203.73	100.21	107.90	N 12°38'03"E
49	20°42'44"	203.73	100.21	107.90	N 12°38'03"E
50	20°42'44"	203.73	100.21	107.90	N 12°38'03"E
51	20°42'44"	203.73	100.21	107.90	N 12°38'03"E
52	20°42'44"	203.73	100.21	107.90	N 12°38'03"E
53	20°42'44"	203.73	100.21	107.90	N 12°38'03"E
54	20°42'44"	203.73	100.21	107.90	N 12°38'03"E
55	20°42'44"	203.73	100.21	107.90	N 12°38'03"E
56	20°42'44"	203.73	100.21	107.90	N 12°38'03"E
57	20°42'44"	203.73	100.21	107.90	N 12°38'03"E
58	20°42'44"	203.73	100.21	107.90	N 12°38'03"E
59	20°42'44"	203.73	100.21	107.90	N 12°38'03"E
60	20°42'44"	203.73	100.21	107.90	N 12°38'03"E
61	20°42'44"	203.73	100.21	107.90	N 12°38'03"E
62	20°42'44"	203.73	100.21	107.90	N 12°38'03"E
63	20°42'44"	203.73	100.21	107.90	N 12°38'03"E
64	20°42'44"	203.73	100.21	107.90	N 12°38'03"E
65	20°42'44"	203.73	100.21	107.90	N 12°38'03"E
66	20°42'44"	203.73	100.21	107.90	N 12°38'03"E
67	20°42'44"	203.73	100.21	107.90	N 12°38'03"E
68	20°42'44"	203.73	100.21	107.90	N 12°38'03"E
69	20°42'44"	203.73	100.21	107.90	N 12°38'03"E
70	20°42'44"	203.73	100.21	107.90	N 12°38'03"E
71	20°42'44"	203.73	100.21	107.90	N 12°38'03"E
72	20°42'44"	203.73	100.21	107.90	N 12°38'03"E
73	20°42'44"	203.73	100.21	107.90	N 12°38'03"E
74	20°42'44"	203.73	100.21	107.90	N 12°38'03"E
75	20°42'44"	203.73	100.21	107.90	N 12°38'03"E
76	20°42'44"	203.73	100.21	107.90	N 12°38'03"E
77	20°42'44"	203.73	100.21	107.90	N 12°38'03"E
78	20°42'44"	203.73	100.21	107.90	N 12°38'03"E
79	20°42'44"	203.73	100.21	107.90	N 12°38'03"E
80	20°42'44"	203.73	100.21	107.90	N 12°38'03"E
81	20°42'44"	203.73	100.21	107.90	N 12°38'03"E
82	20°42'44"	203.73	100.21	107.90	N 12°38'03"E
83	20°42'44"	203.73	100.21	107.90	N 12°38'03"E
84	20°42'44"	203.73	100.21	107.90	N 12°38'03"E
85	20°42'44"	203.73	100.21	107.90	N 12°38'03"E
86	20°42'44"	203.73	100.21	107.90	N 12°38'03"E
87	20°42'44"	203.73	100.21	107.90	N 12°38'03"E
88	20°42'44"	203.73	100.21	107.90	N 12°38'03"E
89	20°42'44"	203.73	100.21	107.90	N 12°38'03"E
90	20°42'44"	203.73	100.21	107.90	N 12°38'03"E
91	20°42'44"	203.73	100.21	107.90	N 12°38'03"E
92	20°42'44"	203.73	100.21	107.90	N 12°38'03"E
93	20°42'44"	203.73	100.21	107.90	N 12°38'03"E
94	20°42'44"	203.73	100.21	107.90	N 12°38'03"E
95	20°42'44"	203.73	100.21	107.90	N 12°38'03"E
96	20°42'44"	203.73	100.21	107.90	N 12°38'03"E
97	20°42'44"	203.73	100.21	107.90	N 12°38'03"E
98	20°42'44"	203.73	100.21	107.90	N 12°38'03"E
99	20°42'44"	203.73	100.21	107.90	N 12°38'03"E
100	20°42'44"	203.73	100.21	107.90	N 12°38'03"E

LEGEND

- BRASS-CAPPED CONCRETE COUNTY MONUMENT
- FOUND 2" DIAMETER IRON PIPE
- FOUND 1" DIAMETER IRON PIPE
- SET IRON ROD, 1 3/16" DIAMETER, 30" LONG, WEIGHING 3.77 LBS. PER LINEAL FT.
- SET IRON PIPE 2" DIAMETER, 30" LONG WEIGHING 3.65 LBS. PER LINEAL FT.
- PARENTHESES INDICATE RECORDED DIMENSION
- 30' BUILDING SETBACK LINE
- 25' BUILDING SETBACK LINE
- EASEMENT TO WISCONSIN ELECTRIC POWER COMPANY - PARALLEL WITH LOT LINE AND 10' WIDE EXCEPT 12' WIDE WHERE SO INDICATED
- SEE SHEET 2 FOR ADDITIONAL UTILITY EASEMENTS
- ALL OTHER LOT AND OUTLOT CORNERS STAKED WITH 3/4" X 24" IRON RODS, WEIGHING 1.50 LBS. PER LINEAL FT.

I hereby certify that I have on this 15th day of August, 1990, microphotographed the above document in accordance with standards established by Sec. 236.03 (1) Statutes and with established procedures. *Lois M. Jensen*
Camera Operator

WISCONSIN
THOMAS P. A. JENSEN
S 1084
EKAHORN,
WI.
Surveyor
August 10, 1990

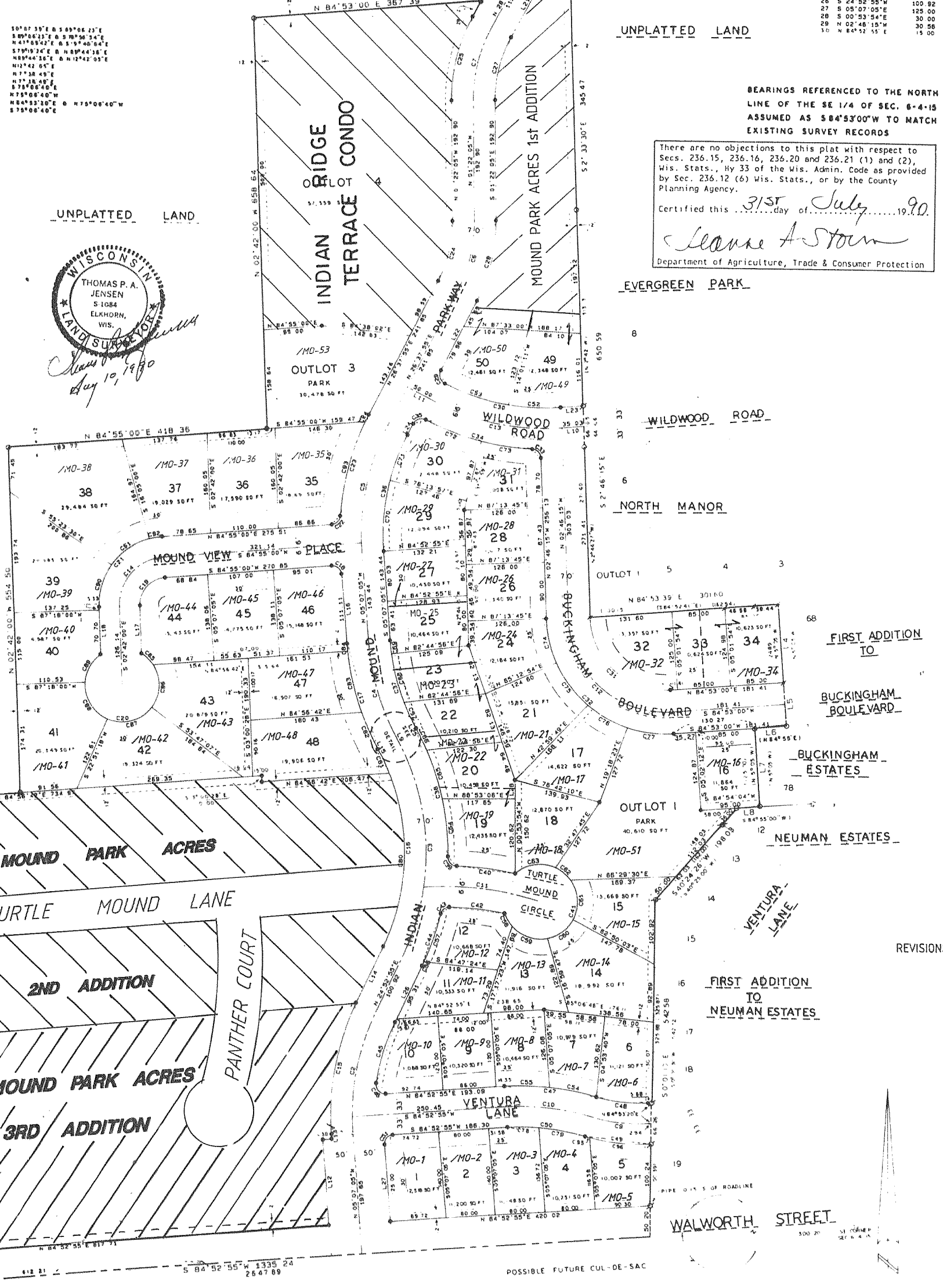


CERTIFIED SURVEY MAP NO. 875 LOT 1

UNPLATTED LAND

BEARINGS REFERENCED TO THE NORTH LINE OF THE SE 1/4 OF SEC. 6-4-18 ASSUMED AS S 84°37'00"W TO MATCH EXISTING SURVEY RECORDS

There are no objections to this plat with respect to Secs. 236.15, 236.16, 236.20 and 236.21 (1) and (2), Wis. Stats., by 33 of the Wis. Admin. Code as provided by Sec. 236.12 (6) Wis. Stats., or by the County Planning Agency.
Certified this 31st day of July, 1990.
Lois M. Jensen
Department of Agriculture, Trade & Consumer Protection



- REVISIONS:
- 08/19/92
 - 09/03/92
 - 04/01/93
 - 08/10/93
 - 11/08/93
 - 11/18/93
 - 05/12/94
 - 05/17/94
 - 03/29/95
 - 06/01/95
 - 10/26/95

