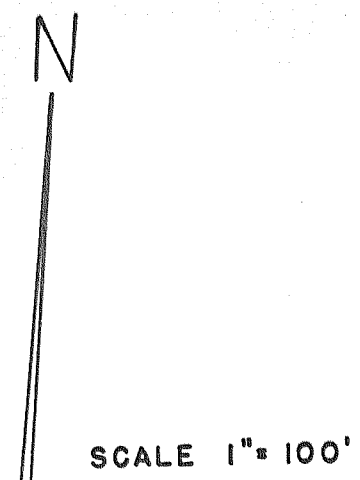
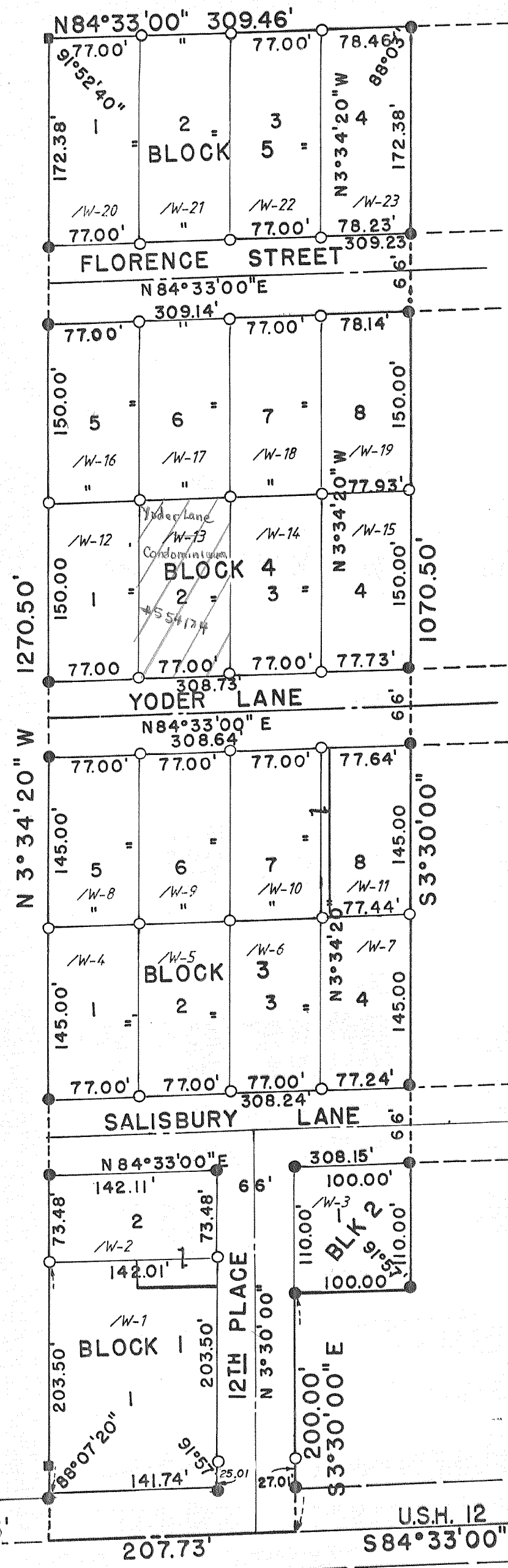


WARD ADDITION TO THE CITY OF WHITEWATER

A PART OF THE SW 1/4 OF THE NW 1/4 OF SECTION 5, T4N, R15E, IN THE
CITY OF WHITEWATER, WALWORTH COUNTY, WISCONSIN



- LEGEND
- CONCRETE MONUMENT
 - IRON PIPE

REVISIONS : 05/17/94
04/11/96

