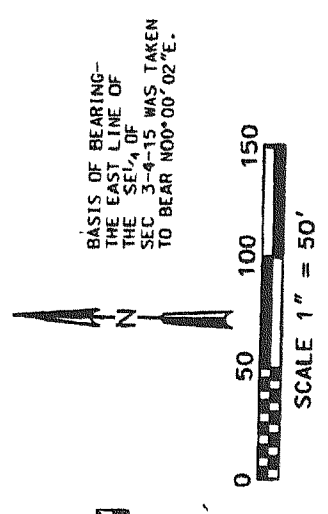


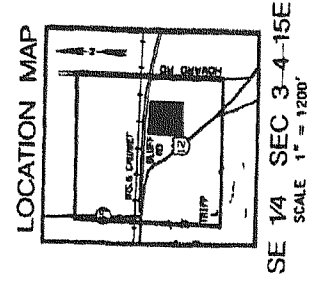
# PINE BLUFF ADDITION NO.1

BEING A REDIVISION OF LOTS 2 AND 3 OF C.S.M. #3201 LOCATED IN THE SE 1/4 OF SECTION 3, TOWNSHIP 4 NORTH, RANGE 15 EAST, CITY OF WHITEWATER, WALWORTH COUNTY, WISCONSIN



CONC. MONUMENT LOCATED AT THE S 1/4 CORNER OF SEC. 3 1/4 N 1/2 E.

BASIS OF BEARING-THE EST. LINE OF SEC. 3-4-15 WAS TAKEN TO BEAR N00°00'02"E.



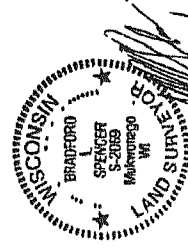
SE 1/4 SEC 3-4-15E  
SCALE 1" = 1200'

## LEGEND

- ① 2" FOUND IRON PIPE
- ⊗ 2 1/2" 36" IRON PIPE SET WEIGHING 365 LBS
- PRIVATE UTILITY EASEMENT
- CURVE NO. (SEE TABLE)

## NOTES

1. TOTAL PARCEL OF LAND INCLUDED IN THE PLAT CONTAINING 7.629 ACRES.
2. ALL DISTANCES HAVE BEEN MEASURED TO THE HUNDRETH OF A FOOT. ANGLES HAVE BEEN MEASURED TO THE NEAREST 5 SECONDS AND HAVE BEEN COMPUTED TO THE NEAREST HALF SECOND.
3. ALL LOT CORNERS MONUMENTED WITH A 1" x 24" IRON PIPE WEIGHING 1.344 LBS.
4. DIRECT VEHICULAR ACCESS TO BLUFF RD BY ANY LOT WITHIN THIS SUBDIVISION IS PROHIBITED.



OWNER:  
RR WALTON & COMPANY LTD  
RUSSEL R WALTON PRESIDENT  
SUITE E  
885 S. JAMESVILLE ST  
WHITEWATER, WI 53190

SURVEYOR/ENGINEER:  
RSV ENGINEERING, INC  
801 MAIN STREET  
MUKPORGAGO, WI 53149

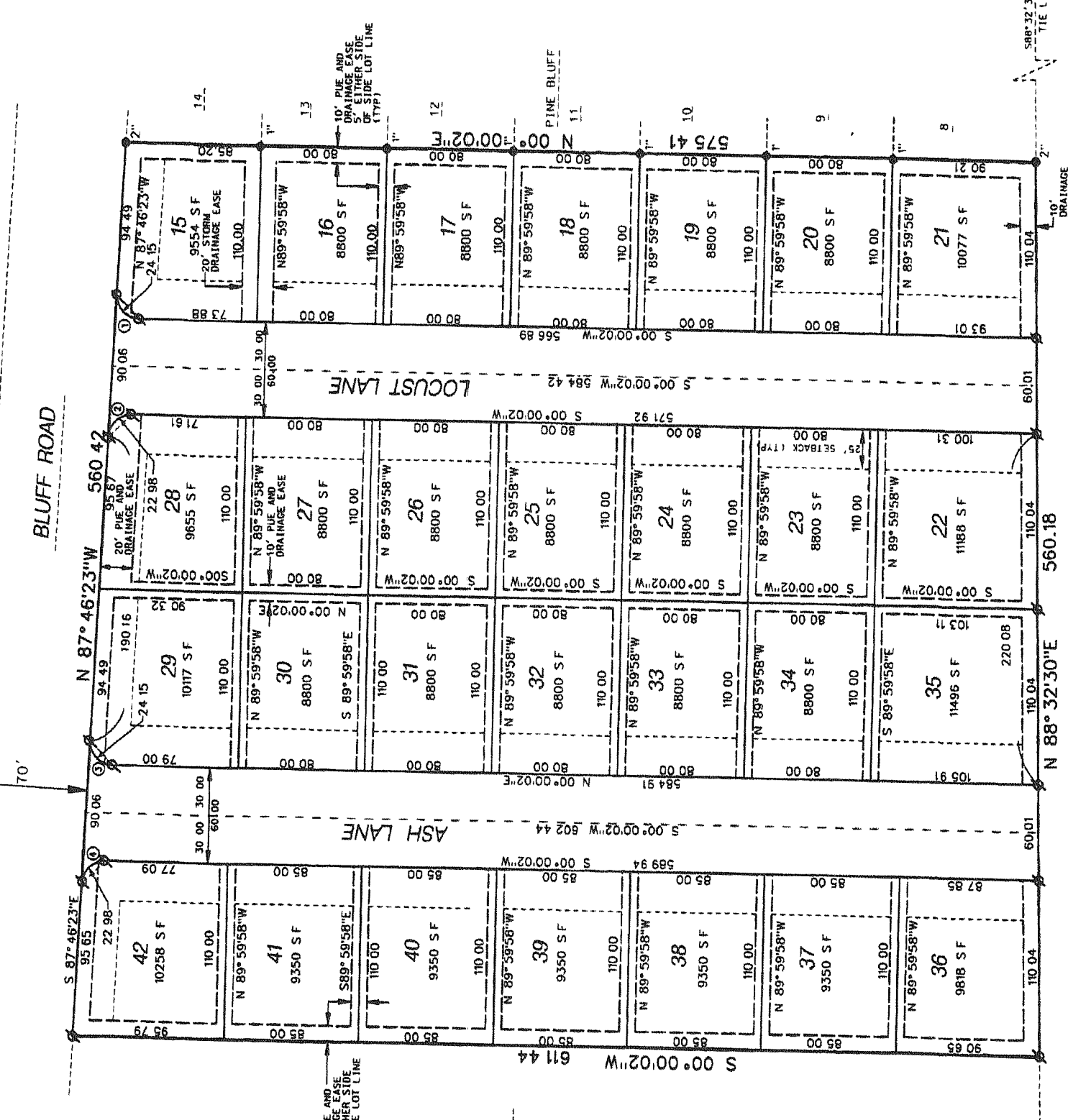
REV. 3/13/01  
DATE 2/8/01

INSTRUMENT DRAFTED BY: BRADFORD L. SPENCER, R.L.S., S--2069

CONC. MONUMENT LOCATED AT THE S 1/4 CORNER OF SEC. 3 1/4 N 1/2 E.

UNPLATED LANDS.

UNPLATED LANDS.



NO.	DELTA	ARC	RADIUS	CH	BRG	CHORD L	TAN. IN	TAN. OUT
1	92°13'35"	24.15	15.00	546°06'49.5"W	21.62	N87°46'23"W	S00°00'02"W	
2	87°46'25"	22.98	15.00	N43°53'10.5"W	20.80	N00°00'02"E	N87°46'23"W	
3	92°13'35"	24.15	15.00	S46°06'49.5"W	21.62	N87°46'23"W	S00°00'02"W	
4	87°46'25"	22.98	15.00	N43°53'10.5"W	20.80	N00°00'02"E	N87°46'23"W	

There are no objections to this plat with respect to Secs. 236.15, 236.16, 236.20 and 236.21(1) and (2), Wis. Stats., or by the County Planning Agency

Certified April 8<sup>th</sup>, 20 01

*Renae M. Dowdy*  
Department of Administration

10' PIPE AND DRAINAGE EASE S. EITHER SIDE OF THE LOT LINE (TYP.)

LOT 1 OF C.S.M. #5125

CONC. MONUMENT LOCATED AT THE S 1/4 CORNER OF SEC. 3 1/4 N 1/2 E.

UNPLATED LANDS.

N00°00'02"E 2645.69' MON TO MON 1917.41'

EAST LINE OF THE SEC. 3-4-15

S88°32'30"W 427.41' TIE LINE