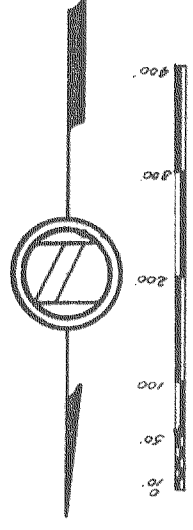
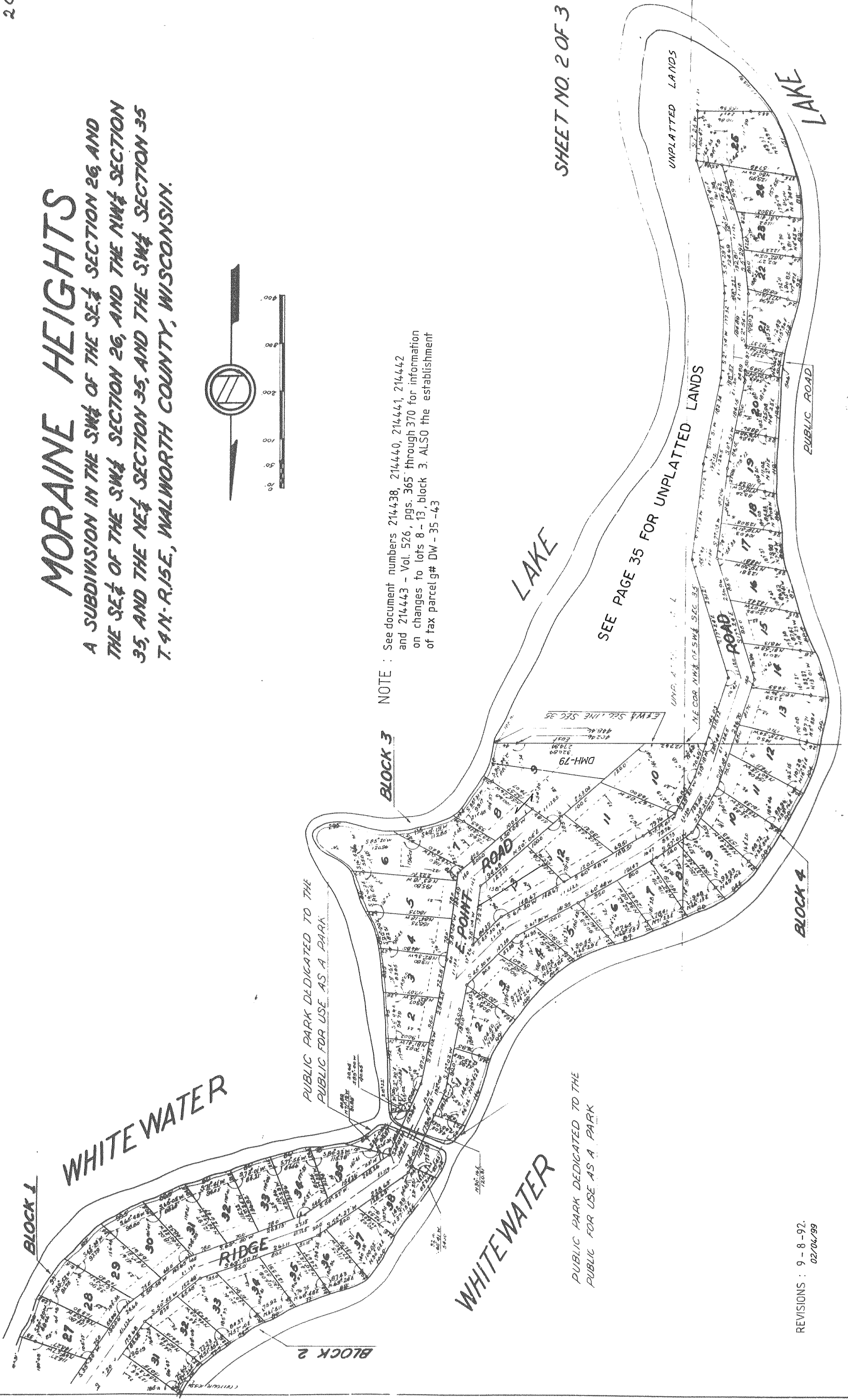


MORaine HEIGHTS
 A SUBDIVISION IN THE SW¼ OF THE SE¼ SECTION 26, AND
 THE SE¼ OF THE SW¼ SECTION 26, AND THE NW¼ SECTION
 35, AND THE NE¼ SECTION 35, AND THE SW¼ SECTION 35
 T.4N.-R.15E., WALWORTH COUNTY, WISCONSIN.



NOTE : See document numbers 214438, 214440, 214441, 214442
 and 214443 - Vol. 526, pgs. 365 through 370 for information
 on changes to lots 8-13, block 3. ALSO the establishment
 of tax parcel # DW-35-43



SHEET NO. 2 OF 3

REVISIONS : 9 - 8 - 92.
02/04/99

*Let approved as required by Chapter 236 & 40
 Statutes, September 23, 1992. M. J. Johnson,
 State Director of Regional Planning*