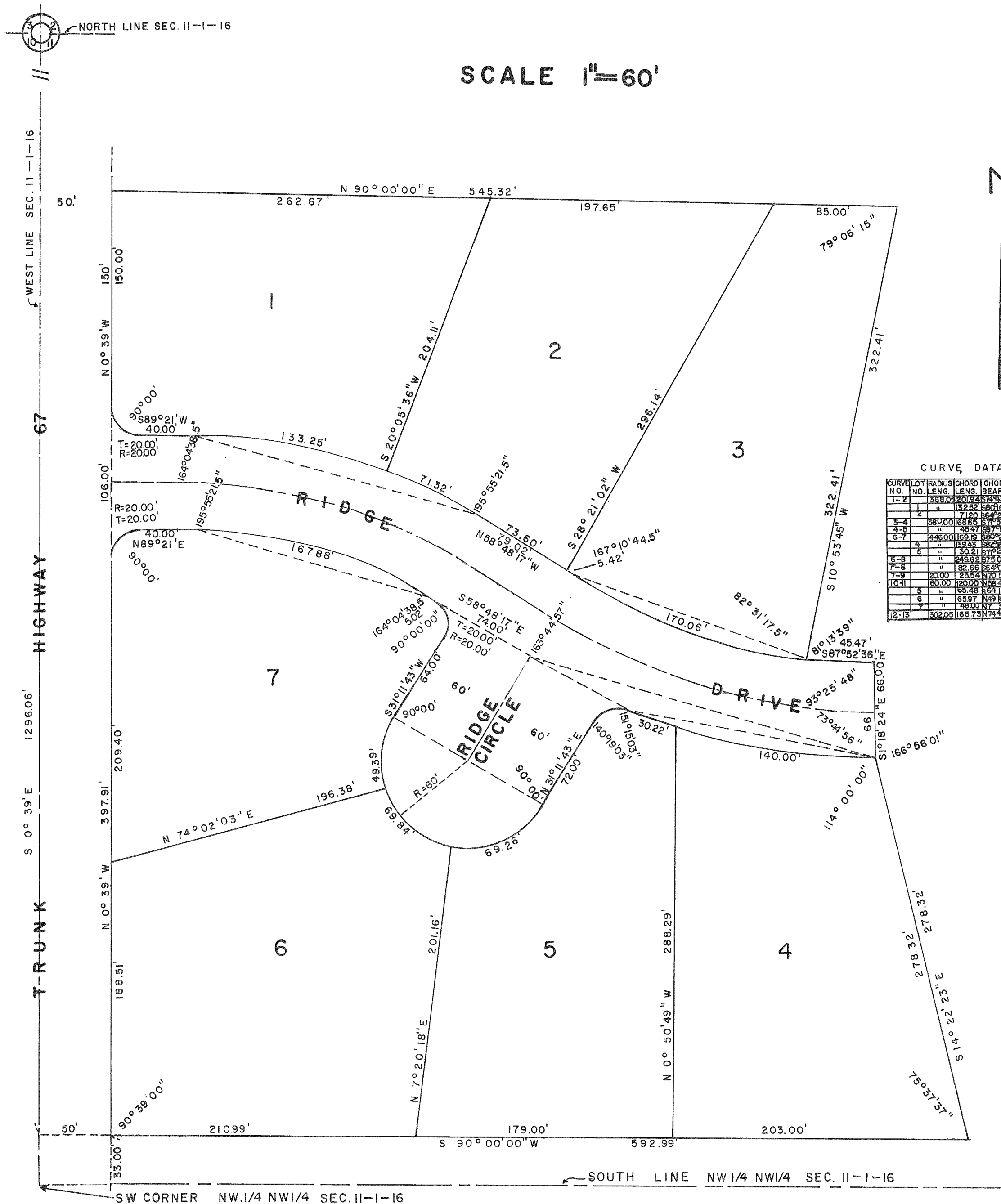


SUNSET RIDGE - UNIT I

LOCATED IN THE NW 1/4 OF THE NW 1/4 OF SECTION II, T1N, R16E
WALWORTH COUNTY, WISCONSIN



CURVE DATA TABLE

CURVE NO.	LOT NO.	RADIUS	CHORD LENG.	CHORD BEARING	CENTRAL ANGLE	TANGENT BEARING
1-2	1	585.00	261.94	S 79° 06' 15" W	179° 12' 30"	S 79° 06' 15" W
2	"	71.20	66.21	S 20° 05' 36" W	110° 06' 07"	S 20° 05' 36" W
3-4	3	580.00	168.65	S 79° 06' 15" W	179° 12' 30"	S 79° 06' 15" W
4-5	"	45.47	89.94	S 10° 53' 45" W	109° 07' 30"	S 10° 53' 45" W
6-7	4	446.00	169.19	S 79° 06' 15" W	179° 12' 30"	S 79° 06' 15" W
5	"	30.21	67.22	S 20° 05' 36" W	110° 06' 07"	S 20° 05' 36" W
6-8	"	248.62	174.05	S 79° 06' 15" W	179° 12' 30"	S 79° 06' 15" W
7-8	"	82.66	164.07	S 10° 53' 45" W	109° 07' 30"	S 10° 53' 45" W
7-9	5	270.00	213.54	S 79° 06' 15" W	179° 12' 30"	S 79° 06' 15" W
10-11	6	60.00	120.00	S 79° 06' 15" W	179° 12' 30"	S 79° 06' 15" W
6	"	65.48	124.16	S 79° 06' 15" W	179° 12' 30"	S 79° 06' 15" W
6	"	65.97	149.18	S 79° 06' 15" W	179° 12' 30"	S 79° 06' 15" W
7	"	48.00	96.00	S 79° 06' 15" W	179° 12' 30"	S 79° 06' 15" W
12-13	7	302.05	165.73	S 79° 06' 15" W	179° 12' 30"	S 79° 06' 15" W