

691489

PAGE 1 OF 2

KETTLE MORaine ESTATES

LOCATED IN THE NW 1/4 OF SECTION 4,
T4N., R17E., WALWORTH COUNTY, WISCONSIN

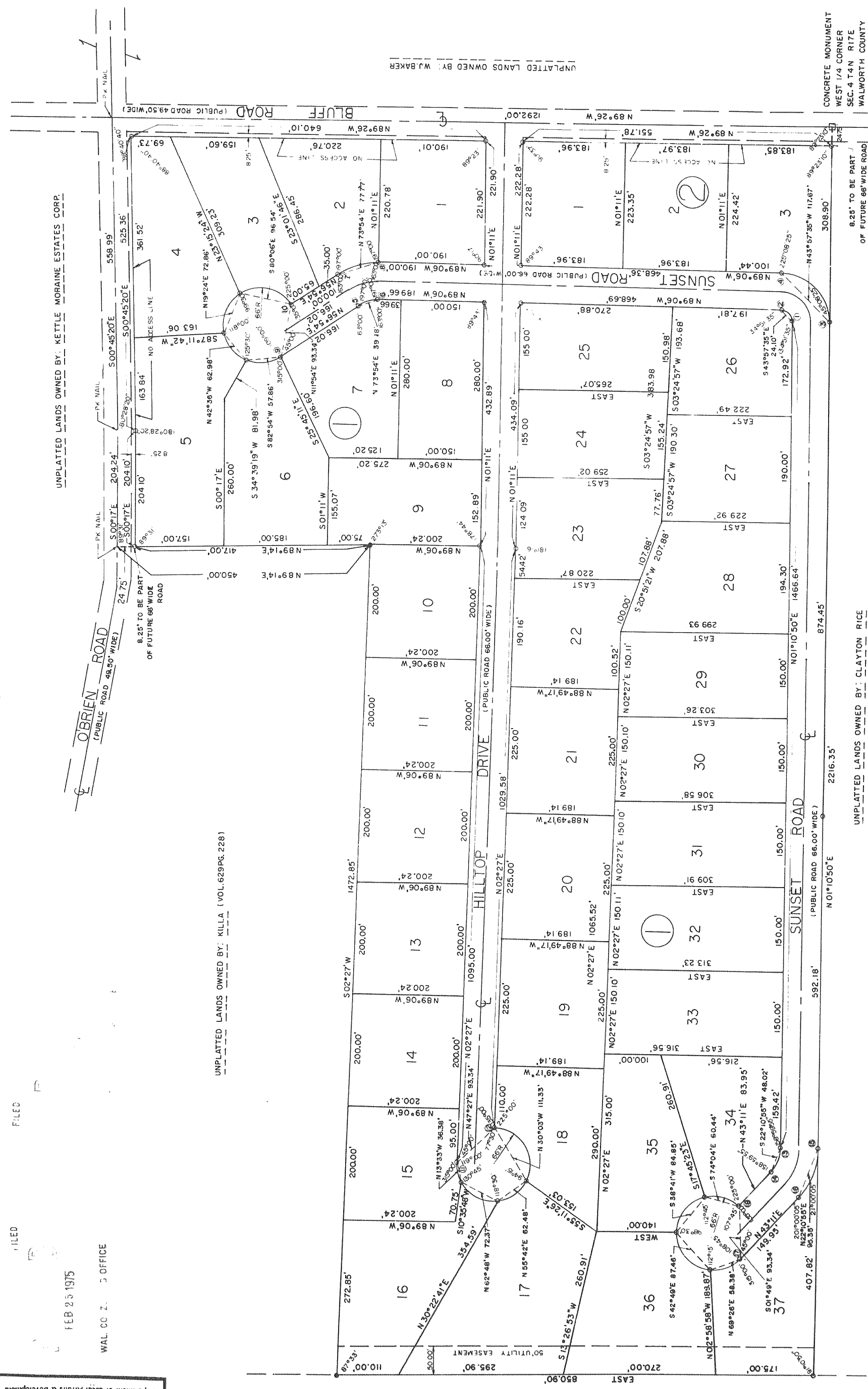
There are no objections to this plat with respect to Sects. 236.15,
236.16, 236.20 and 236.21 (1) and (2), Wis. Stats., and H. 65 of
the Wis. Admin. Code as provided by Sec. 236.12 (6), Wis. Stats.

FILED
FEB 25 1975
WAL. CO. Z. 3 OFFICE

FILED
FEB 25 1975
WAL. CO. Z. 3 OFFICE

FILED
FEB 25 1975
WAL. CO. Z. 3 OFFICE

FILED
FEB 25 1975
WAL. CO. Z. 3 OFFICE



SIGNED THIS 1 DAY OF DECEMBER 1974
 JOSEPH M. BIAGI RLS:28
 REVISED THIS 12 DAY OF DECEMBER 1974
 JOSEPH M. BIAGI RLS:12
 REVISED THIS 27 DAY OF JANUARY 1975
 JOSEPH M. BIAGI RLS:12

LEGEND:
 ○ - INDICATES IRON PIPE SET
 2" X 30" MIN. WT. 3.65 LBS./LN.FT
 □ - INDICATES CONCRETE MONUMENT
 NOTE: ALL OTHER LOT CORNERS
 ARE 1" X 24" IRON PIPE MIN. WT. 1.13 LBS./FT.
 ● - INDICATES IRON PIPE FOUND 1" DIA.



TRUE NORTH

UNPLATTED LANDS OWNED BY: CLAYTON RICE
 UNPLATTED LANDS OWNED BY: W.J. BAKER
 UNPLATTED LANDS OWNED BY: LOUISE BARBES

As declaration of Partition Agreement
 Vol 137 Books Page 98