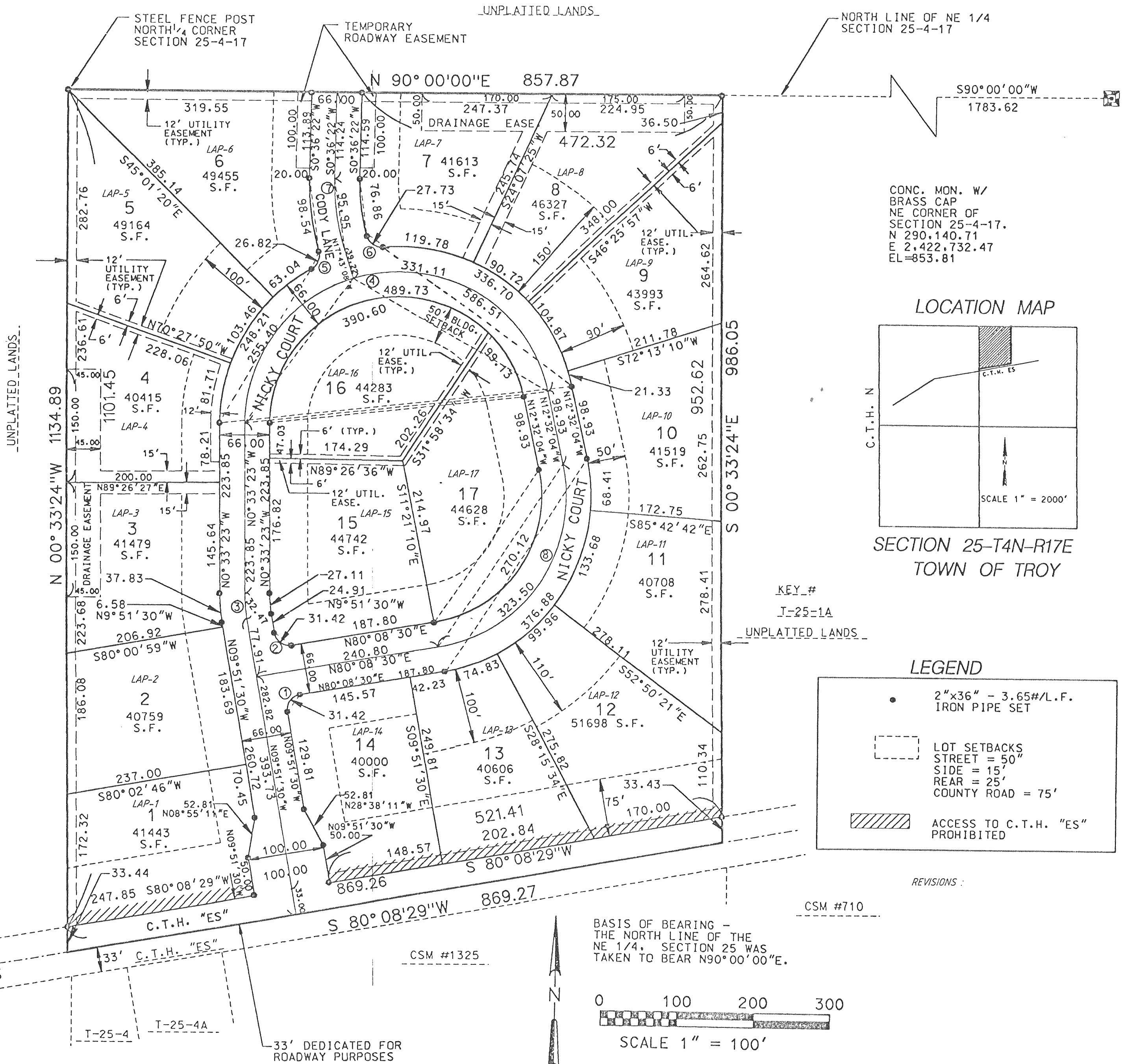


# APPLE WOOD ESTATES

BEING A SUBDIVISION IN THE NW 1/4 OF THE NE 1/4 OF SECTION 25, TOWN 4 NORTH, RANGE 17 EAST, TOWN OF TROY, WALWORTH COUNTY, WISCONSIN.

UNPLATTED LANDS

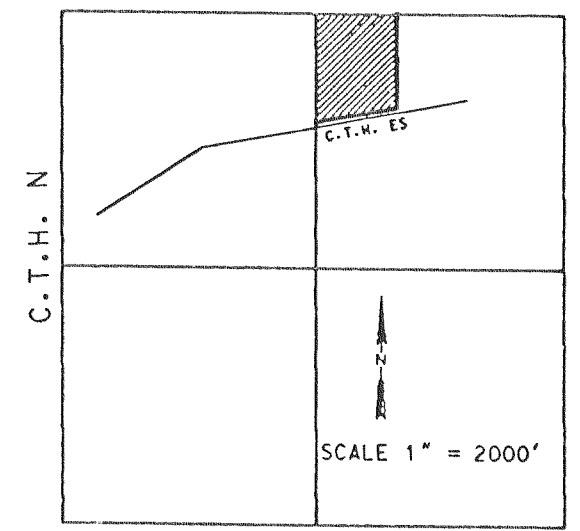
NORTH LINE OF NE 1/4 SECTION 25-4-17



S90°00'00"W  
1783.62

CONC. MON. W/  
BRASS CAP  
NE CORNER OF  
SECTION 25-4-17.  
N 290.140.71  
E 2,422.732.47  
EL=853.81

### LOCATION MAP



SECTION 25-T4N-R17E  
TOWN OF TROY

KEY #  
T-25-1A

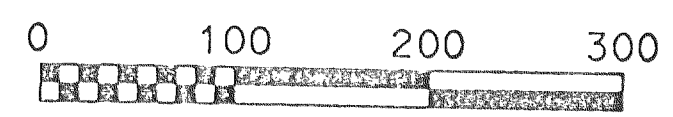
### LEGEND

- 2"x36" - 3.65#/L.F. IRON PIPE SET
- ⬜ LOT SETBACKS  
STREET = 50'  
SIDE = 15'  
REAR = 25'  
COUNTY ROAD = 75'
- ▨ ACCESS TO C.T.H. "ES" PROHIBITED

REVISIONS :

CSM #710

BASIS OF BEARING -  
THE NORTH LINE OF THE  
NE 1/4. SECTION 25 WAS  
TAKEN TO BEAR N90°00'00"E.



SCALE 1" = 100'

CSM #1325

33' DEDICATED FOR  
ROADWAY PURPOSES