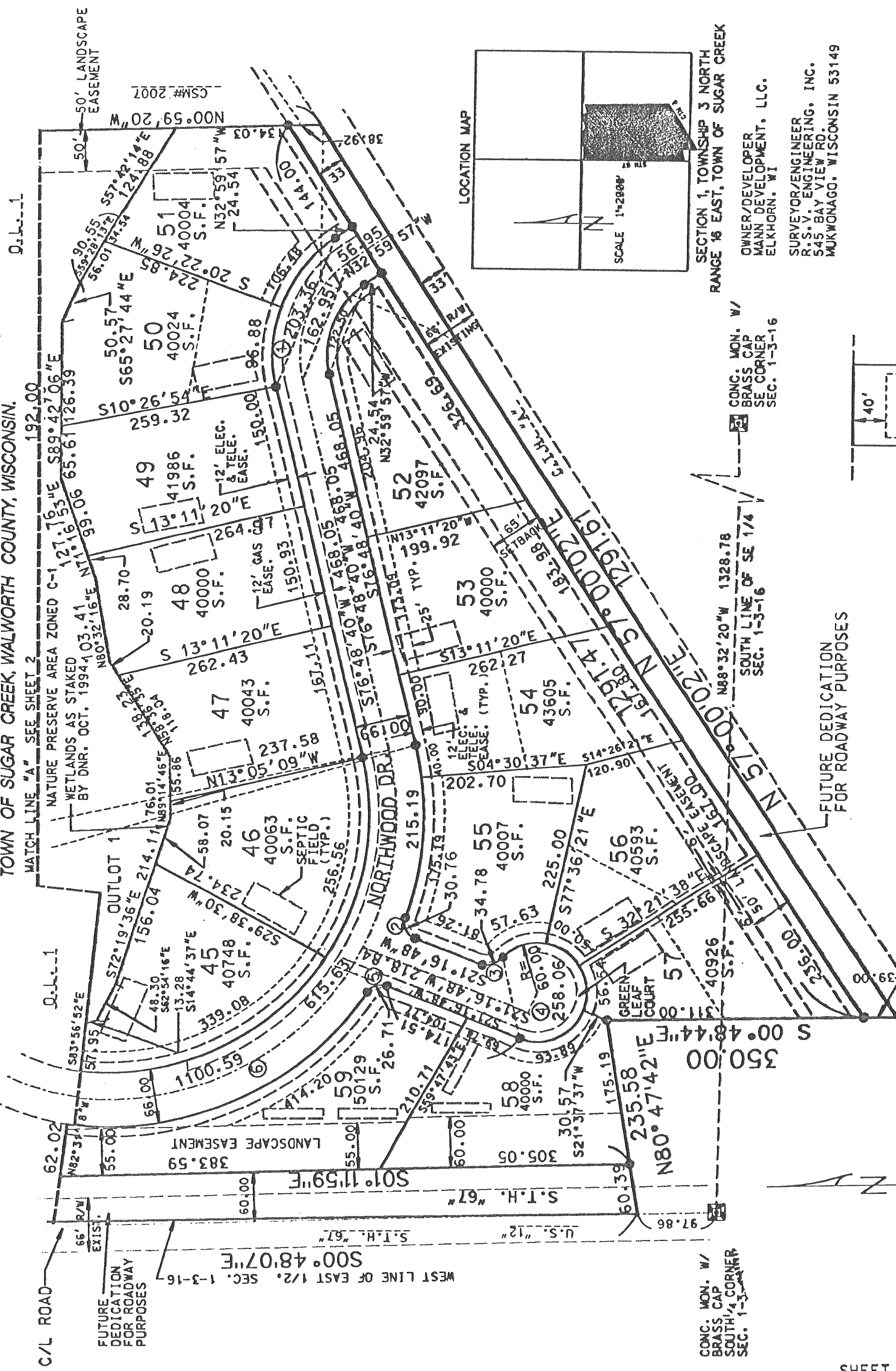


LAUDERDALE LAKES ESTATES

A CONDOMINIUM

LOCATED IN THE NW 1/4 AND SW 1/4 OF THE SE 1/4 OF SECTION 1 AND THE NW 1/4 OF THE NE 1/4 OF SECTION 12, TOWN 3 NORTH, RANGE 16 EAST, TOWN OF SUGAR CREEK, WALWORTH COUNTY, WISCONSIN.



MATCH LINE "A" SEE SHEET 2

NATURE PRESERVE AREA ZONED C-1 WETLANDS AS STAKED BY DNR. OCT. 1994

50' LANDSCAPE EASEMENT

12' ELEC. & TELE. EASE.

50' LANDSCAPE EASEMENT

12' ELEC. & TELE. EASE.

50' LANDSCAPE EASEMENT

12' ELEC. & TELE. EASE.

50' LANDSCAPE EASEMENT

12' ELEC. & TELE. EASE.

50' LANDSCAPE EASEMENT

12' ELEC. & TELE. EASE.

50' LANDSCAPE EASEMENT

12' ELEC. & TELE. EASE.

50' LANDSCAPE EASEMENT

12' ELEC. & TELE. EASE.

50' LANDSCAPE EASEMENT

12' ELEC. & TELE. EASE.

50' LANDSCAPE EASEMENT

12' ELEC. & TELE. EASE.

50' LANDSCAPE EASEMENT

12' ELEC. & TELE. EASE.

50' LANDSCAPE EASEMENT

12' ELEC. & TELE. EASE.

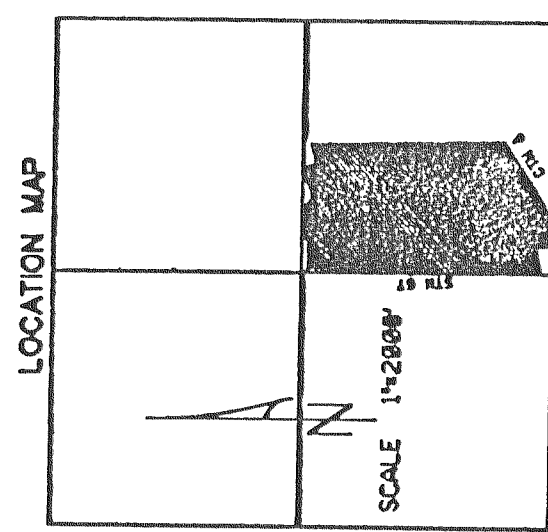
50' LANDSCAPE EASEMENT

12' ELEC. & TELE. EASE.

50' LANDSCAPE EASEMENT

12' ELEC. & TELE. EASE.

50' LANDSCAPE EASEMENT



SECTION 1, TOWNSHIP 3 NORTH RANGE 16 EAST, TOWN OF SUGAR CREEK

OWNER/DEVELOPER
MANN DEVELOPMENT, LLC.
ELKHORN, WI

SURVEYOR/ENGINEER
R.S.V. ENGINEERING, INC.
545 BAY VIEW RD.
MUKWONAGO, WISCONSIN 53149

CONG. MON. W/
BRASS CAP
SE CORNER
SEC. 1-3-16

CONG. MON. W/
BRASS CAP
SE CORNER
SEC. 1-3-16

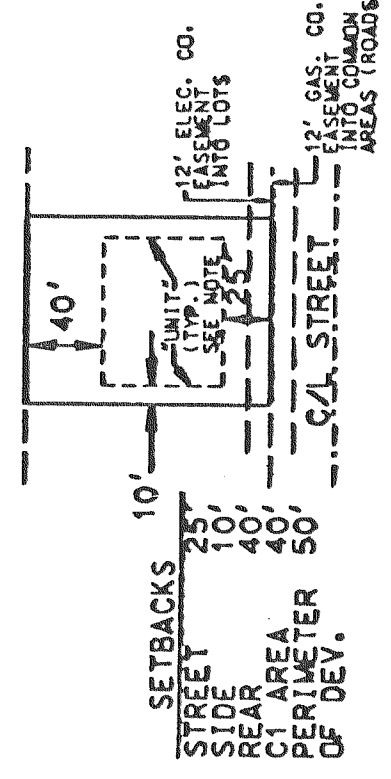
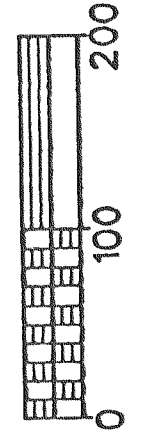
CONG. MON. W/
BRASS CAP
SE CORNER
SEC. 1-3-16

CONG. MON. W/
BRASS CAP
SE CORNER
SEC. 1-3-16

CONG. MON. W/
BRASS CAP
SE CORNER
SEC. 1-3-16

FUTURE DEDICATION FOR ROADWAY PURPOSES

Scale: 1"=100'



NOTE:
LOT HOMESITE (TYP.)
COMMON AREAS CONSISTS OF THE ROADWAYS, LAKES OUTSIDE OF LOT LINES AND ANY OUTLOTS.
ROADWAY COMMON AREAS CAN BE USED FOR EASEMENT PURPOSES FOR PRIVATE SEPTIC SYSTEM FORCE MAINS AND FACILITIES.

NOTE:
THE UNIT IS A CUBE OF AIR LOCATED ON THE INDIVIDUAL GROUNDS IDENTIFIED BY NUMBER ON THE PLAN, WHICH CUBE SHALL HAVE AS ITS EXTERIOR BOUNDARY LINES PARALLEL WITH THE BOUNDARY LINES OF THE INDIVIDUAL GROUNDS LOCATED AT THE SET BACK DISTANCE ESTABLISHED BY THE ORDINANCE OF THE COUNTY OF WALWORTH AND THE TOWN OF SUGAR CREEK AND HAVING AS ITS BASE A DEPTH OF NO MORE THAN TWELVE FEET (12') IN THE GROUND TO ALLOW FOR BASEMENT AND FOOTING EXCAVATION AND A HEIGHT AS ESTABLISHED BY THE APRESAID ORDINANCES.