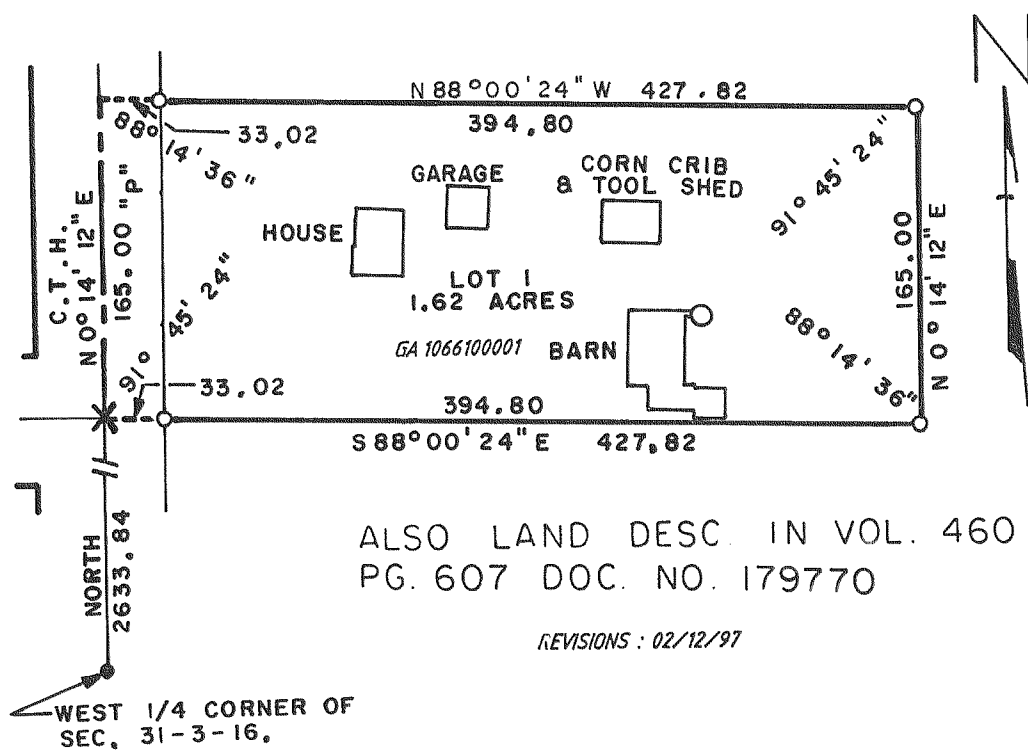


CERTIFIED SURVEYS 1047, 1061 & 1115

TOWN OF SUGAR CREEK

CERTIFIED SURVEY NO. 1061

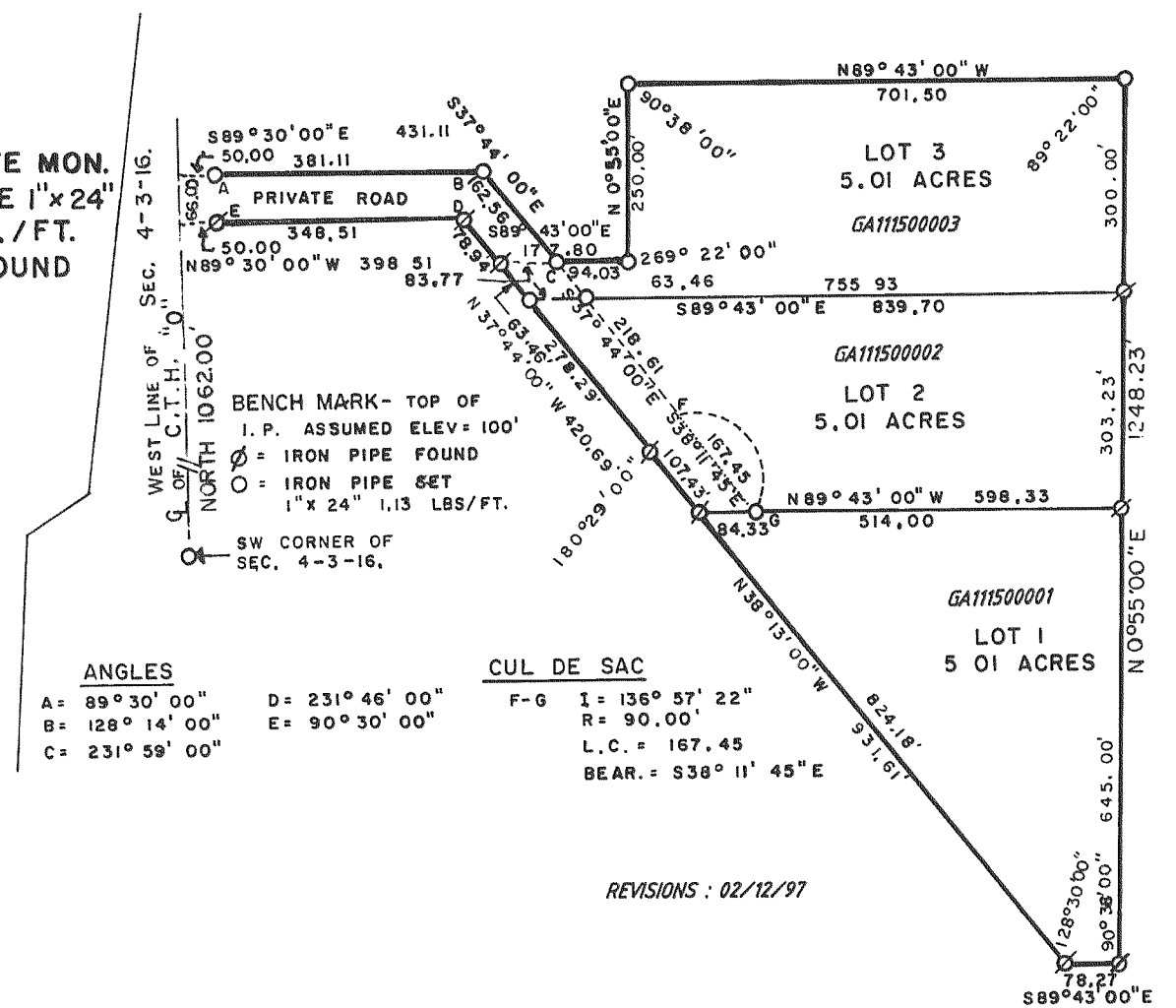
LOCATED IN SW 1/4 OF SECTION 30, T3N, R16E



CERTIFIED SURVEY NO. 1115

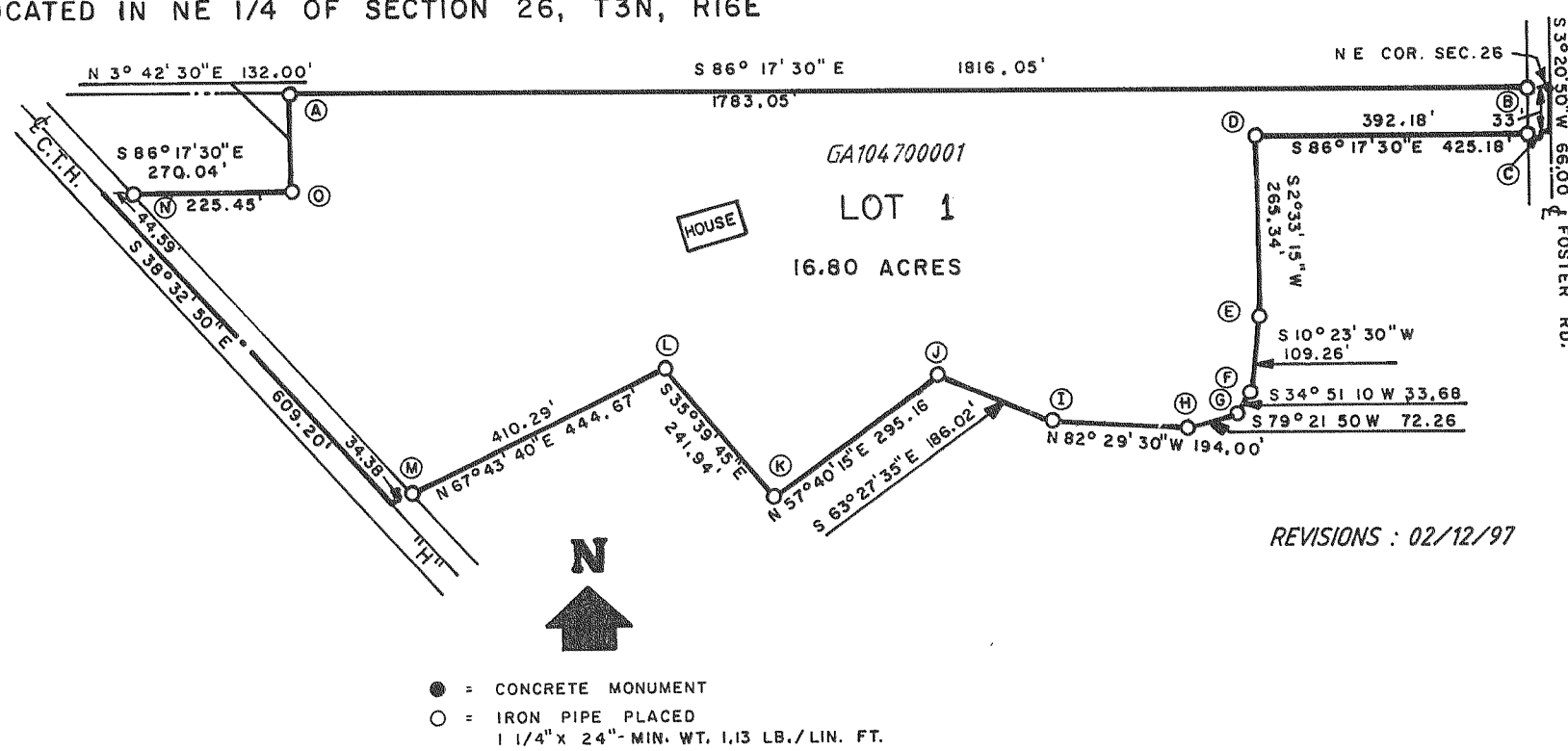
LOCATED IN SW 1/4 OF SECTION 4, T3N, R16E
 NOTE THIS C.S. ELIMINATES C.S. 1012

- = CONCRETE MON.
- = IRON PIPE 1" x 24" 1.13 LBS./FT.
- X = SPIKE FOUND



CERTIFIED SURVEY NO. 1047

LOCATED IN NE 1/4 OF SECTION 26, T3N, R16E



INTERIOR ANGLES

- A = 90° 00' 00"
- B = 90° 21' 40"
- C = 89° 38' 20"
- D = 271° 09' 15"
- E = 172° 09' 45"
- F = 155° 32' 20"
- G = 135° 29' 20"
- H = 161° 51' 20"
- I = 160° 58' 05"
- J = 238° 52' 10"
- K = 93° 20' 00"
- L = 256° 36' 35"
- M = 106° 16' 30"
- N = 47° 44' 40"
- O = 270° 00' 00"

- = CONCRETE MONUMENT
- = IRON PIPE PLACED 1 1/4" x 24" - MIN. WT. 1.13 LB./LIN. FT.