

SHEET 2 OF 3 SHEETS
 NORTH 1/4 CORNER
 SEC. 1, T.3N., R.16E.

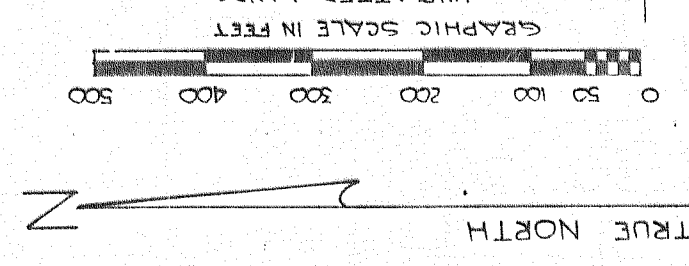
SYLVAN TRACE SUBDIVISION

LOCATED IN THE SW 1/4 AND THE SE 1/4 OF THE NW 1/4, AND THE NE 1/4 AND THE SE 1/4 OF THE SW 1/4 OF SECTION 2, TOWN 3 NORTH, RANGE 16 EAST, WALWORTH COUNTY, WISCONSIN

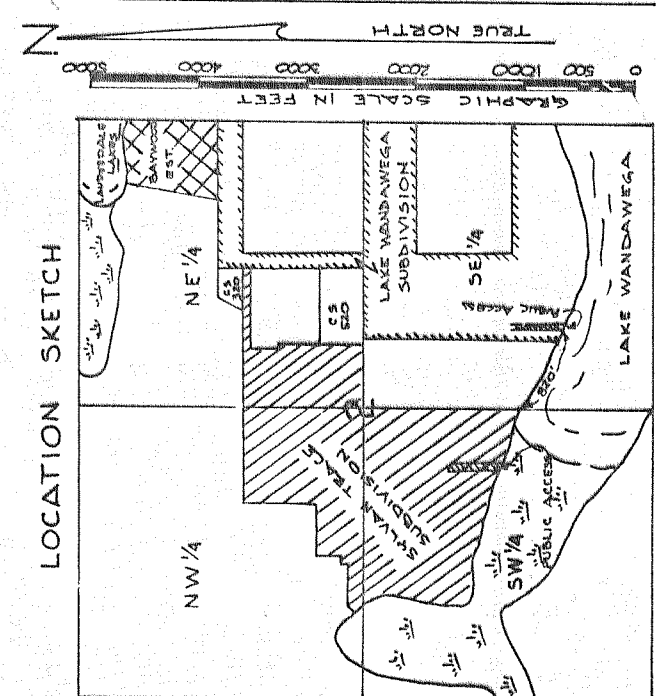
UNPLATTED LANDS, JAMES E & BARBARA A. BIAGI OWNERS

UNPLATTED LANDS PHIL HOWARD OWNER

UNPLATTED LANDS JAMES E & BARBARA A. BIAGI OWNERS

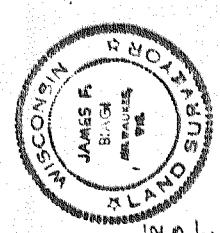


LEGEND
 ○ - INDICATES IRON PIPE 2"x30" @ 365'/IN. FT.
 ◊ - INDICATES IRON PIPE 1"x30" @ 113'/IN. FT.
 ■ - INDICATES CONCRETE MONUMENT 6"x6" PIPE 1"x24" @ 113'/IN. FT.
 NOTE: ALL DISTANCES ARE MEASURED TO THE NEAREST 1/100th OF A FOOT.
 --- - INDICATES 20'00" DRAINAGE EASEMENT
 --- - INDICATES 12'00" PUBLIC UTILITY EASEMENT
 NOTE: ALL ANGULAR MEASUREMENTS HAVE BEEN MADE TO THE NEAREST 5 SECONDS AND COMPUTED TO HALF-SECONDS.



CURVE DATA TABLE

CURVE NO.	LOT NO.	RADIUS	CHORD LENGTH	CHORD BEARING	TANGENT BEARING	CENTRAL ANGLE
1-2	4	60.00'	64.00'	S 89° 54' 00" E	S 52° 31' 59" E	29° 15' 55"
	5	60.00'	56.92'	S 28° 12' 53" E	S 52° 31' 59" E	60° 00' 00"
	6	60.00'	60.00'	S 30° 06' 00" W	S 30° 06' 00" W	60° 00' 00"
	7	60.00'	60.00'	N 89° 54' 00" W	N 89° 54' 00" W	60° 00' 00"
	8	60.00'	56.92'	N 28° 12' 53" E	N 28° 12' 53" E	60° 00' 00"
3-4	22	60.00'	114.95'	N 00° 19' 20" E	N 33° 41' 21" E	29° 15' 55"
	21	60.00'	114.95'	S 72° 59' 38" E	S 72° 59' 38" E	146° 31' 59"
	23	60.00'	64.00'	S 45° 19' 20" W	S 45° 19' 20" W	60° 00' 00"
	24	60.00'	56.92'	N 41° 21' 40" W	N 41° 21' 40" W	56° 31' 59"



JAMES F. BIAGI RLS 272
 DATED THE 29th DAY OF DECEMBER 1977
 REVISED THIS 30th DAY OF JANUARY 1978
 REVISED THIS 27th DAY OF FEBRUARY 1978
 JAMES F. BIAGI
 JAMES P. BIAGI RLS 272

There are no objections to this plat with respect to Sects. 236.13, 236.16, 236.20 and 236.21 (1) and (2), Wis. Stats., and M. 65 of the Wis. Admin. Code as provided by Sec. 236.12 (6), Wis. Stats. Certified this 17th day of March, 1978
 Robert J. Peltzman
 Department of Local Assistance & Development

REVISIONS: 05/21/96
 02/12/97