

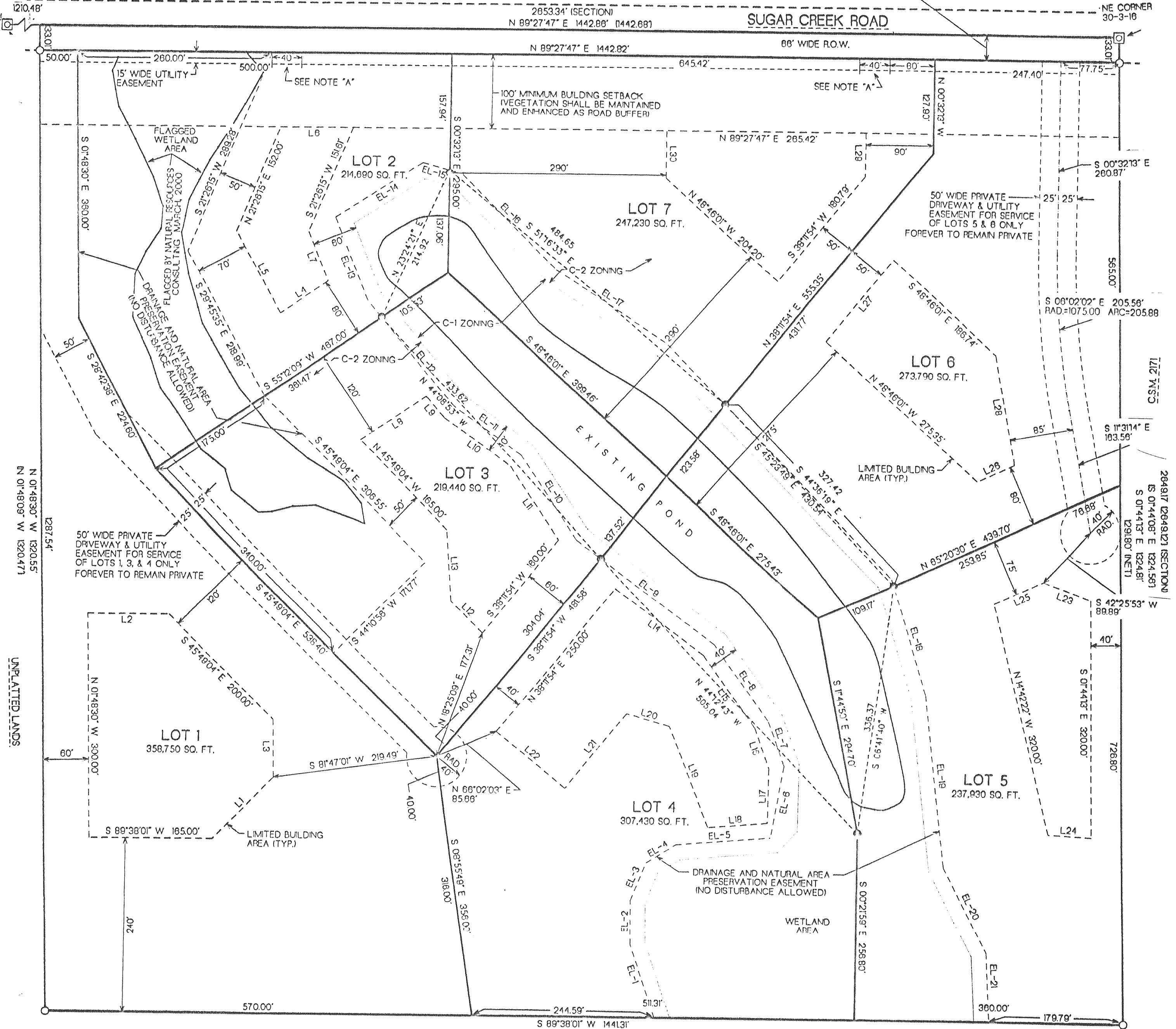
SUGAR CREEK ESTATES, A SUBDIVISION

LOCATED IN THE NE 1/4 & NW 1/4 OF THE NE 1/4 OF SECTION 30,
TOWN 3 NORTH, RANGE 16 EAST, WALWORTH COUNTY, WISCONSIN

N. 1/4 CORNER
30-3-16

33' WIDE STRIP OF LAND DEDICATED
TO THE PUBLIC AS RIGHT OF WAY

NE CORNER
30-3-16



SUGAR CREEK ROAD

66' WIDE R.O.W.

2853.34' (SECTION)
N 89°27'47" E 1442.88' (1442.68')

N 89°27'47" E 1442.82'

N 89°27'47" E 285.42'

LOT 7
247,230 SQ. FT.

50' WIDE PRIVATE
DRIVEWAY & UTILITY
EASEMENT FOR SERVICE
OF LOTS 5 & 6 ONLY
FOREVER TO REMAIN PRIVATE

LOT 6
273,790 SQ. FT.

LOT 3
219,440 SQ. FT.

LIMITED BUILDING
AREA (TYP.)

LOT 1
358,750 SQ. FT.

LOT 4
307,430 SQ. FT.

LOT 5
237,930 SQ. FT.

NOTE: AS OF THE DATE OF THIS PLAT,
STATE PLANE COORDINATES DO
NOT EXIST ON THE COUNTY
MONUMENTS SHOWN HEREON.

NOTE A: VEHICULAR ACCESS FOR LOTS 2 & 7 IS HEREBY RESTRICTED
TO THE 40' WIDE AREA AS SHOWN ON THIS PLAT.

E. 1/4 CORNER
30-3-16