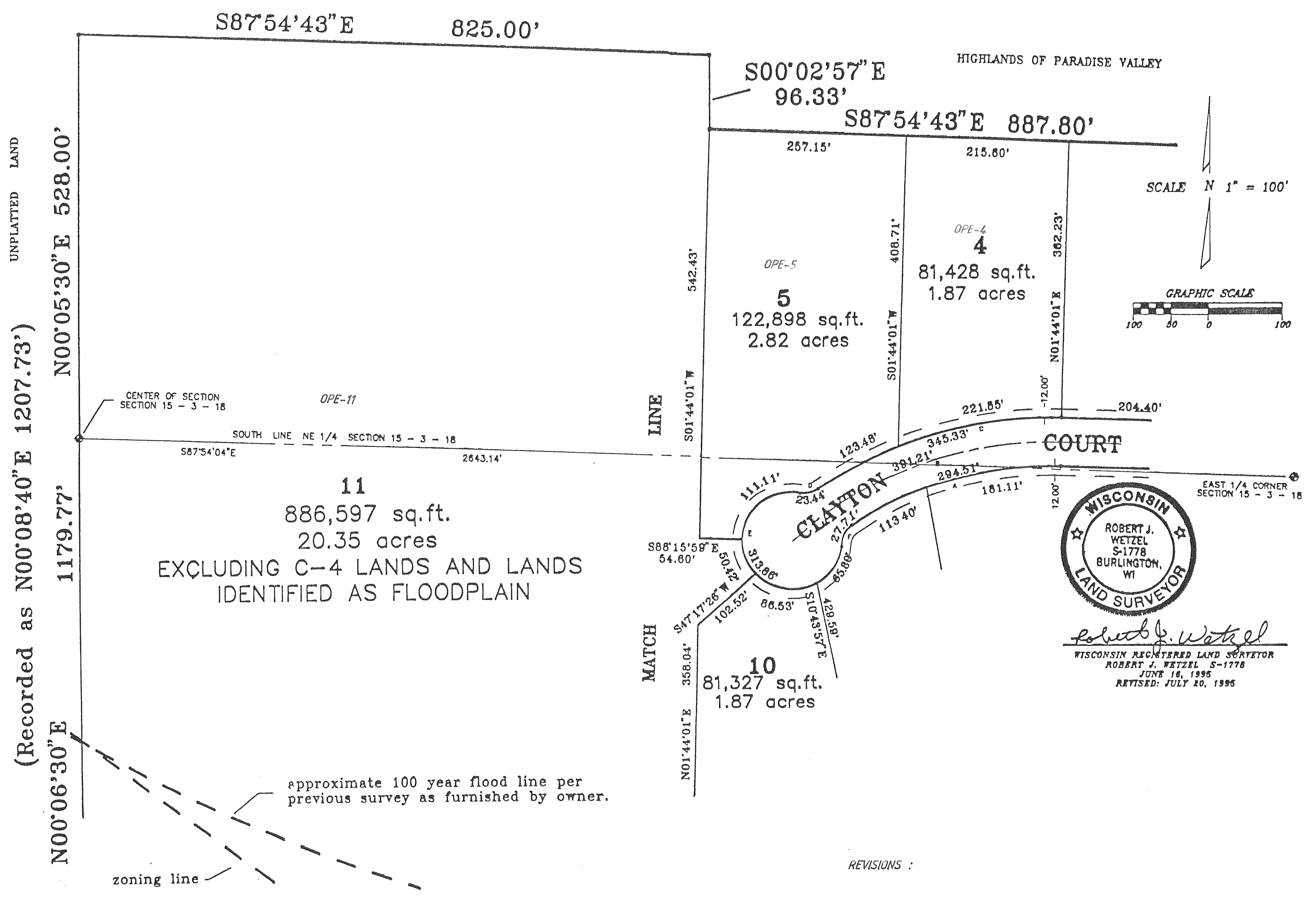


PARADISE ESTATES
A CONDOMINIUM
A CONDOMINIUM IN THE TOWN OF SPRING PRAIRIE
WALWORTH COUNTY, WISCONSIN.

BEING A PART OF THE SOUTHEAST 1/4 AND THE SOUTHWEST 1/4 OF THE
NORTHEAST 1/4, AND THE NORTHEAST 1/4, NORTHWEST 1/4 AND SOUTHWEST 1/4
OF THE SOUTHEAST 1/4 OF SECTION 15, TOWNSHIP 3 NORTH, RANGE 18 EAST OF THE
FOURTH PRINCIPAL MERIDIAN, IN THE TOWN OF SPRING PRAIRIE, WALWORTH
COUNTY, WISCONSIN.



(Recorded as N00°08'40"E 1207.73')

UNPLATTED LAND

N00°05'30"E 528.00'
1179.77'
N00°06'30"E

MAPPING DATE : 08/07/95

REVISIONS :