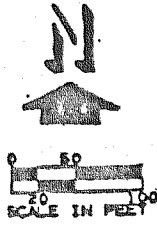


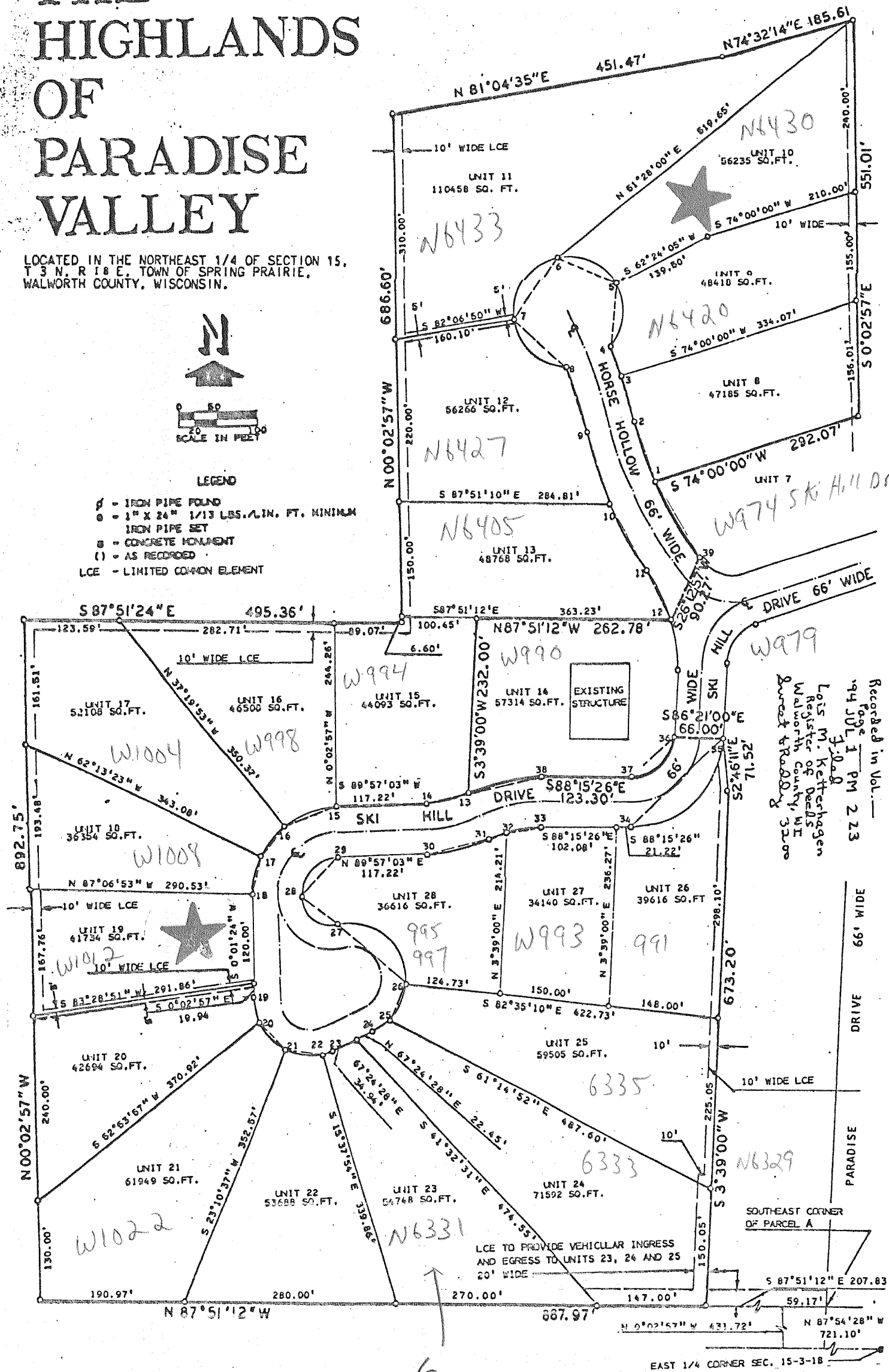
# THE HIGHLANDS OF PARADISE VALLEY

## PHASE TWO

LOCATED IN THE NORTHEAST 1/4 OF SECTION 15, T 5 N., R 18 E., TOWN OF SPRING PRAIRIE, WALWORTH COUNTY, WISCONSIN.



- LEGEND
- ⊕ - IRON PIPE FOUND
  - - 1" X 24" 1/13 LBS./LIN. FT. MINIMUM IRON PIPE SET
  - - CONCRETE MONUMENT
  - ( ) - AS RECORDED
  - LCE - LIMITED COMMON ELEMENT



1st addendum to unit 1 + unit 23 # 505831