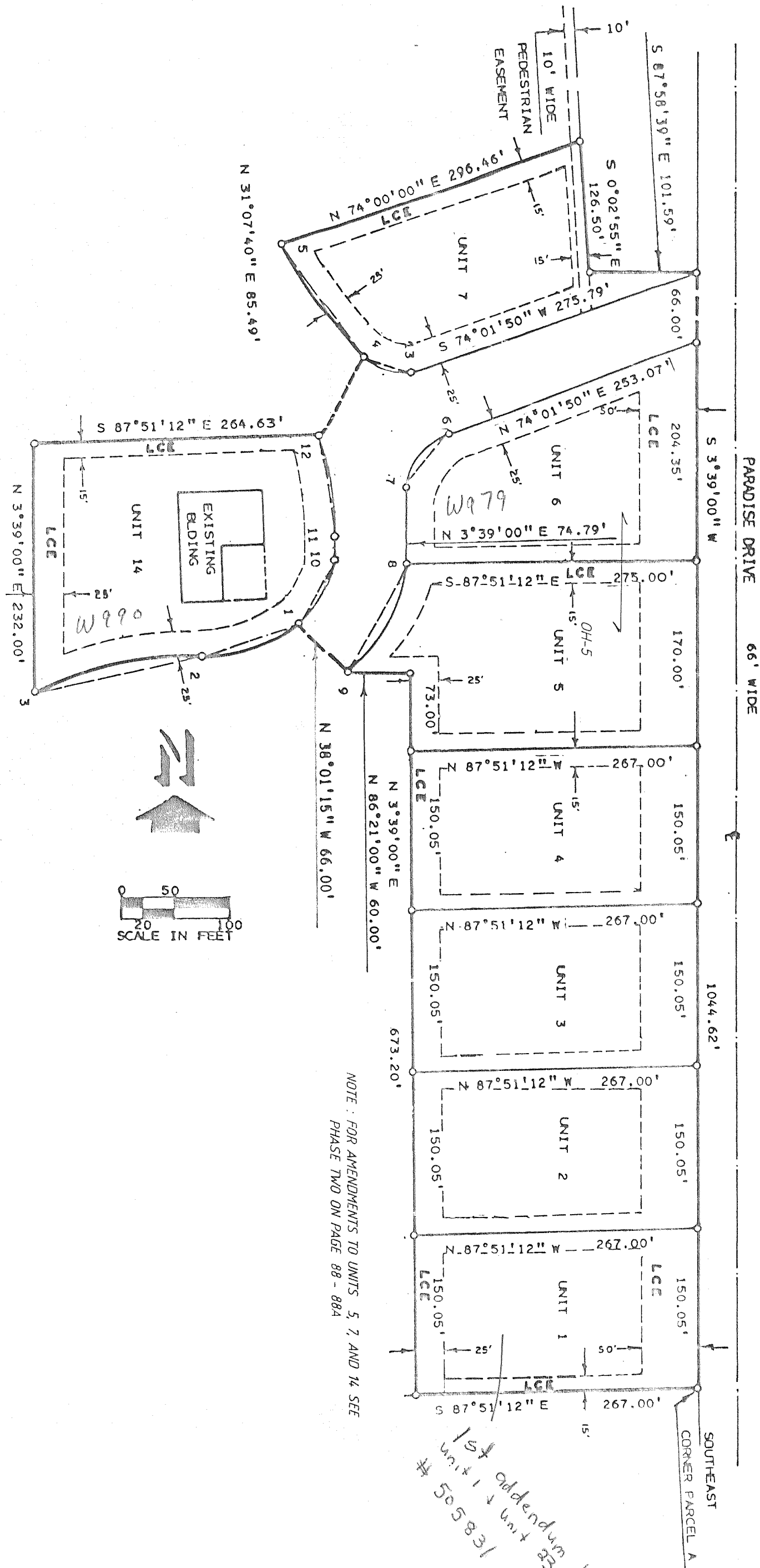


# THE HIGHLANDS OF PARADISE VALLEY

LOCATED IN THE NORTHEAST 1/4 OF SECTION 15 AND IN THE SOUTHWEST 1/4 OF SECTION 11, ALL IN T3N, R18E, TOWN OF SPRING PRAIRIE, WALWORTH COUNTY, WISCONSIN.



LEGEND

- ⊕ - IRON PIPE FOUND
- - 1" X 24" 1/13 LBS./LIN. FT. MINIMUM IRON PIPE SET
- - CONCRETE MONUMENT
- ( ) - AS RECORDED
- LCE - LIMITED COMMON ELEMENT

AREA OF UNITS

UNITS 1-4	40063.35 SQ. FT.
UNIT 5	47948.96 SQ. FT.
UNIT 6	43424.23 SQ. FT.
UNIT 7	39251.43 SQ. FT.
UNIT 14	54639.69 SQ. FT.

REVISIONS : 07/15/94  
10/26/98