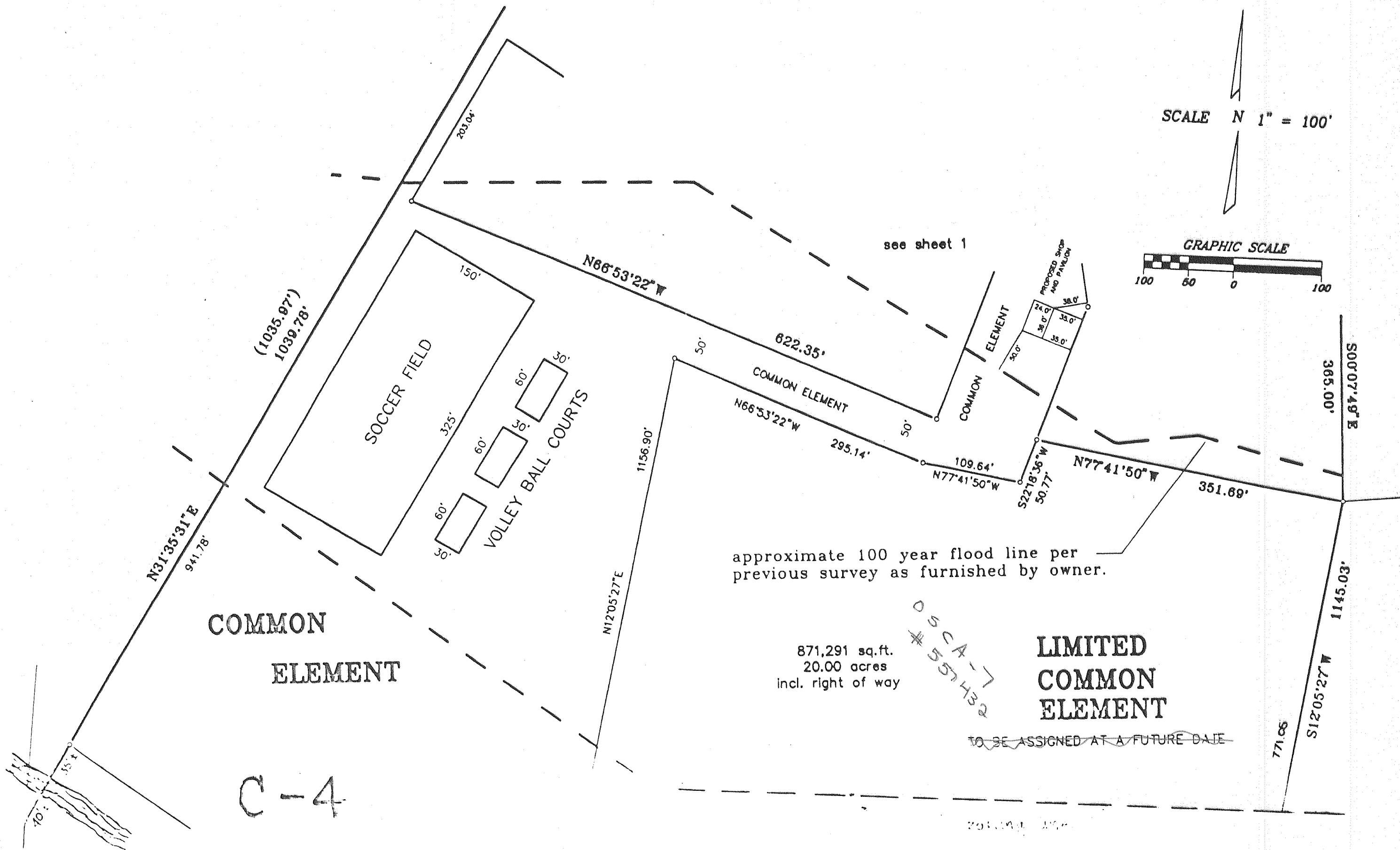


SUGAR CREEK ACRES
A CONDOMINIUM

114A

A CONDOMINIUM IN THE TOWN OF SPRING PRAIRIE
WALWORTH COUNTY, WISCONSIN.

BEING A PART OF THE SOUTHEAST 1/4 OF THE NORTHEAST 1/4 AND THE
NORTHEAST 1/4, NORTHWEST 1/4, SOUTHWEST 1/4 AND SOUTHEAST 1/4
OF THE SOUTHEAST 1/4 OF SECTION 15, TOWNSHIP 3 NORTH, RANGE 18 EAST OF THE
FOURTH PRINCIPAL MERIDIAN, IN THE TOWN OF SPRING PRAIRIE, WALWORTH
COUNTY, WISCONSIN.



REVISIONS :