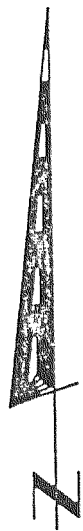


HEGEMAN'S SUBDIVISION

A SUBDIVISION OF PART OF THE NORTHEAST 1/4 OF THE SOUTHWEST 1/4 AND PART OF THE SOUTHEAST 1/4 OF THE SOUTHWEST 1/4 OF SECTION 10, TOWN 2 NORTH, RANGE 18 EAST, TOWN OF LYONS, WALWORTH COUNTY, WISCONSIN.



SCALE 1" = 80 FEET

NORTH - SOUTH 1/4 SECTION LINE SEC. 10-2-18 ASSUMED TO BEAR NORTH

GRAPHIC SCALE IN FEET



LEGEND

- FOUND 1" DIAMETER IRON PIPE
 - ⊙ FOUND 3/4" DIAMETER IRON ROD
 - FOUND WALWORTH COUNTY SECTION CORNER MONUMENT WITH BRASS CAP
 - IRON ROD 1 11/16" DIAMETER, 30" LONG, WEIGHING 7.6lbs./lineal ft. PLACED
 - (---) RECORD DIMENSION
 - //// NO ACCESS
 - U.E. UTILITY EASEMENT
- ALL OTHER LOT CORNERS - 3/4" DIAMETER IRON ROD, 24" LONG, WEIGHING 1.5lbs./lineal ft. PLACED.

BUILDING SETBACK LINES

- 25' FRONT SETBACK LINE - SUBDIVISION ROAD
- 50' FRONT SETBACK LINE - TOWN ROAD
- 25' REAR SETBACK LINE
- 10' SIDEYARD SETBACK LINE

LINE	BEARING	DISTANCE
L1	S 5°14'20" W	14.82
L2	S 26°00'00" W	62.83
L3	N 26°00'00" E	62.83
L4	N 81°02'20" W	65.00
L5	N 45°02'24" E	30.72
L6	N 2°46'59" E	70.52
L7	N 7°38'51" E	149.38
L8	N 7°38'51" E	25.22
L9	S 89°59'52" E	22.62
L10	S 18°13'33" E	53.74
L11	N 18°13'33" W	43.15
L12	N 18°11'19" W	33.00
L13	S 7°38'51" W	11.87
L14	S 55°24'27" W	34.87
L15	N 18°13'33" E	48.45
L16	S 0°00'00" W	40.92

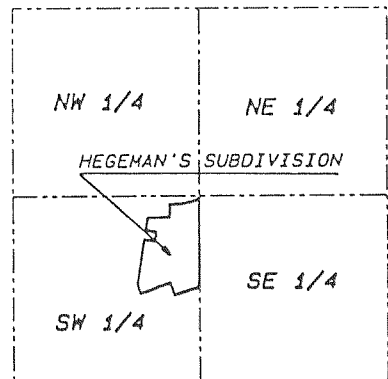
CURVE	ARC	DELTA	RADIUS	CHORD LENGTH	CHORD BEARING	TANG BEARING
C1	104.08	26°42'00"	223.34	103.14	S 75°40'00" W	N 62°19'00" E
C2	104.08	26°42'00"	223.34	103.14	N 75°40'00" E	S 62°19'00" W
C3	119.46	26°42'00"	256.34	118.38	N 75°40'00" E	S 62°19'00" W
C4	88.70	26°42'00"	190.34	87.90	N 75°40'00" E	S 62°19'00" W
C5	119.46	26°42'00"	256.34	118.38	S 75°40'00" W	N 62°19'00" E
C6	88.70	26°42'00"	190.34	87.90	S 75°40'00" W	N 62°19'00" E
C7	93.20	20°00'00"	267.00	92.73	S 15°00'00" W	S 6°00'00" W
C8	23.85	45°34'23"	30.00	84.00	S 64°00'00" E	S 19°34'23" E
C9	283.94	271°08'48"	30.00	23.24	N 3°12'48" E	N 19°34'23" W
C10	23.85	45°34'23"	333.00	115.65	N 16°00'00" E	S 6°00'00" W
C11	116.72	20°00'00"	300.00	104.19	S 15°00'00" W	S 6°00'00" W
C12	104.72	20°00'00"	333.00	84.71	S 15°00'00" W	S 6°00'00" W
C13	84.94	14°36'50"	333.00	64.71	S 23°18'29" W	S 6°00'00" W
C14	31.30	5°23'10"	333.00	52.71	S 6°28'58" W	S 6°00'00" W
C15	54.57	52°06'43"	60.00	53.40	S 58°57'40" W	S 6°00'00" W
C16	55.34	52°50'40"	60.00	50.39	N 69°47'18" W	S 6°00'00" W
C17	52.00	49°39'24"	60.00	52.43	N 19°03'09" W	S 6°00'00" W
C18	54.26	51°48'34"	60.00	64.23	N 39°12'50" E	S 6°00'00" W
C19	67.77	64°43'05"	60.00	58.00	S 68°55'43" W	S 6°00'00" W
C20	58.00	0°10'34"	190.34	67.32	S 78°39'19" W	S 6°00'00" W
C21	67.67	20°22'14"	190.34	20.43	S 65°23'36" W	S 6°00'00" W
C22	20.44	6°08'12"	190.34	96.83	S 23°25'24" W	S 6°00'00" W
C23	99.46	22°13'48"	256.34	19.99	S 86°46'54" W	S 6°00'00" W
C24	20.00	4°28'12"	256.34			

NOTES

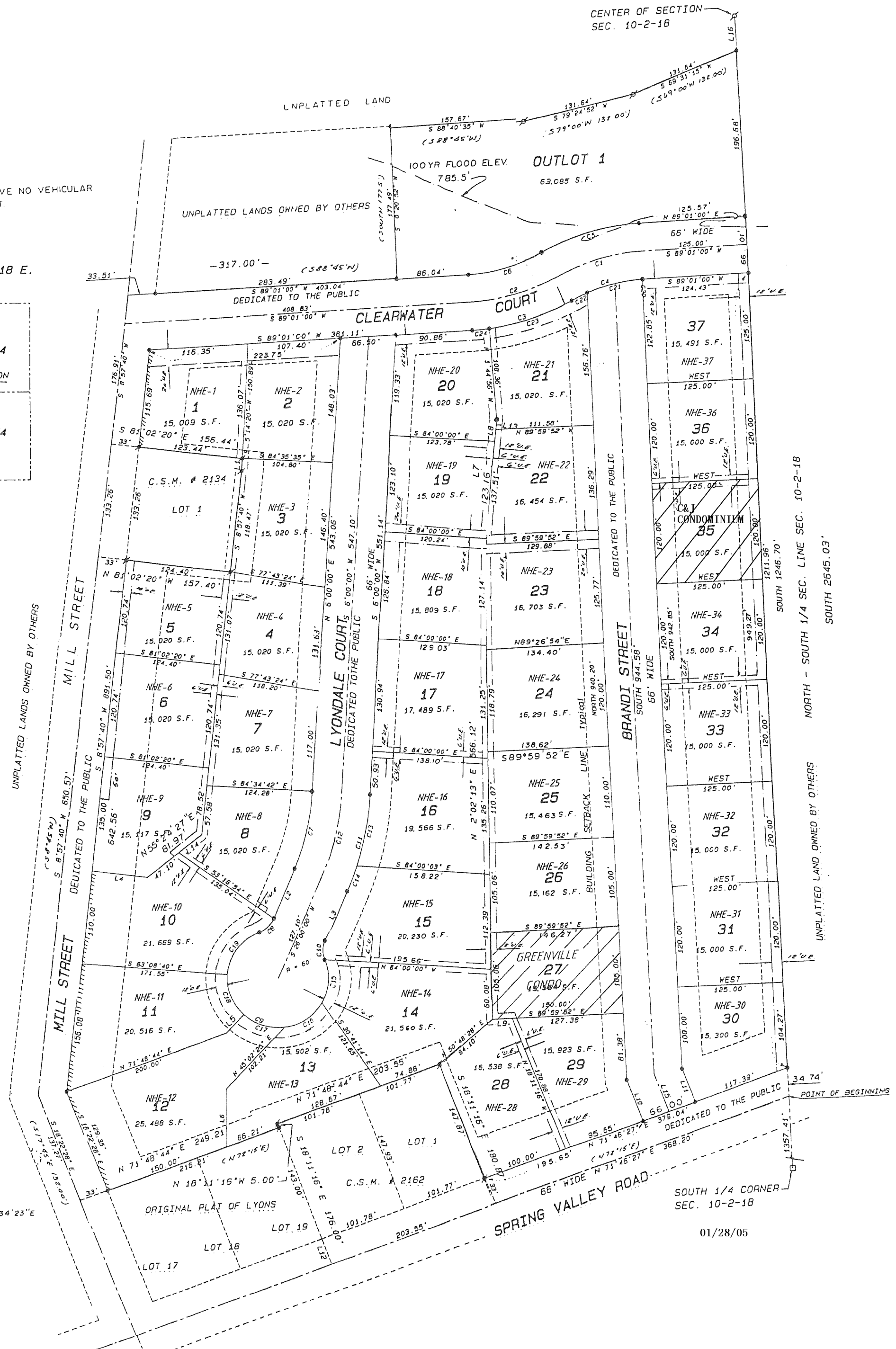
LOTS 1, 10, 11 AND 12 SHALL HAVE NO VEHICULAR ACCESS ALONG MILL STREET.

LOCATION SKETCH

SECTION 10 T.2 N., R.18 E.



SCALE 1" = 2000 FEET



01/28/05