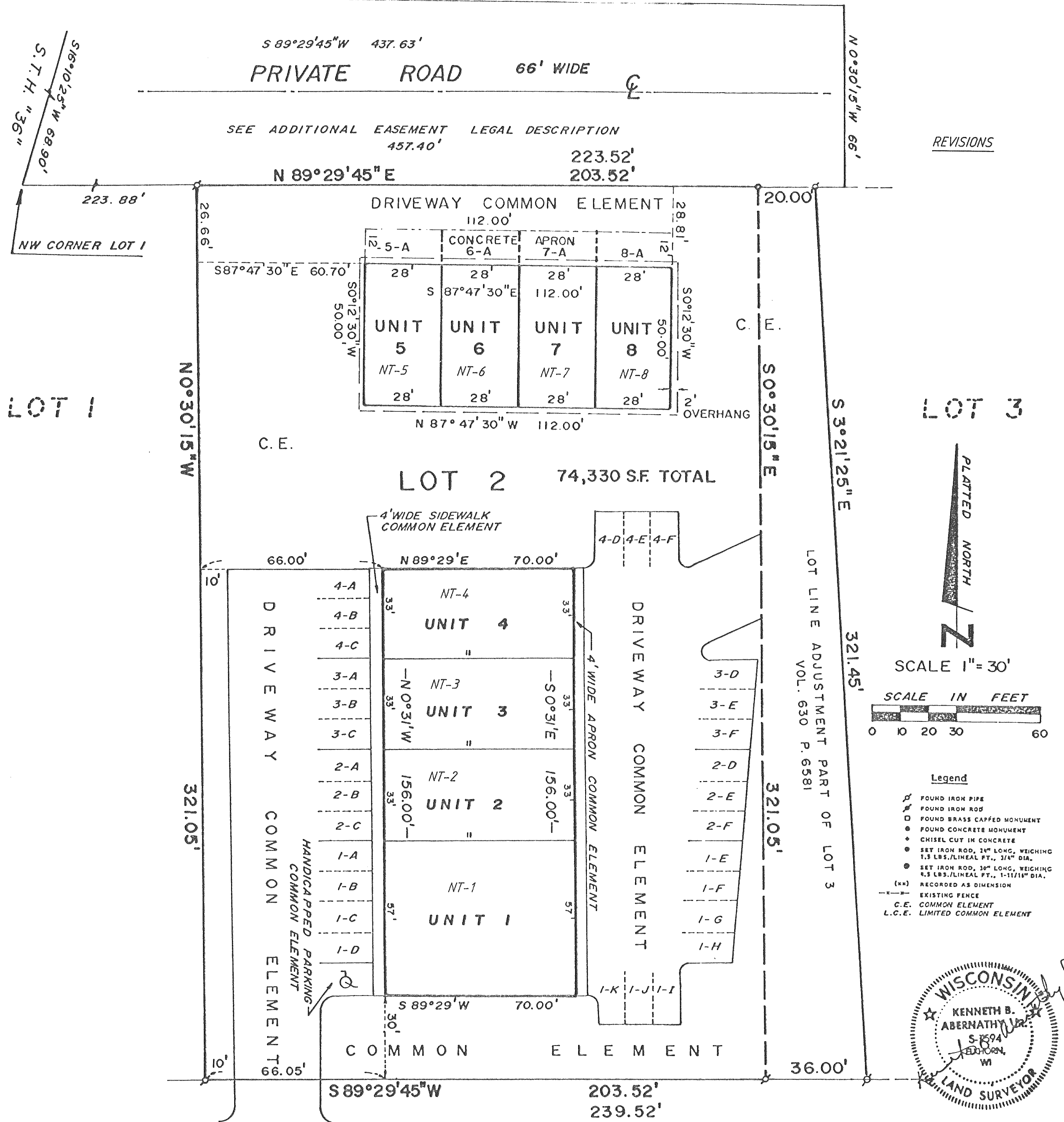


TWIST BUILDING

83A

A CONDOMINIUM LOCATED IN THE SOUTH 1/2 OF SECTION 19, T.2N., R.18E, WALWORTH COUNTY, WISCONSIN.

TOWN OF LYONS



Note: All parking stalls are Limited Common Elements for individual units as designated on the plat. Parking stalls are typically 11' by 20'.

MADAUS DRIVE 66' WIDE