

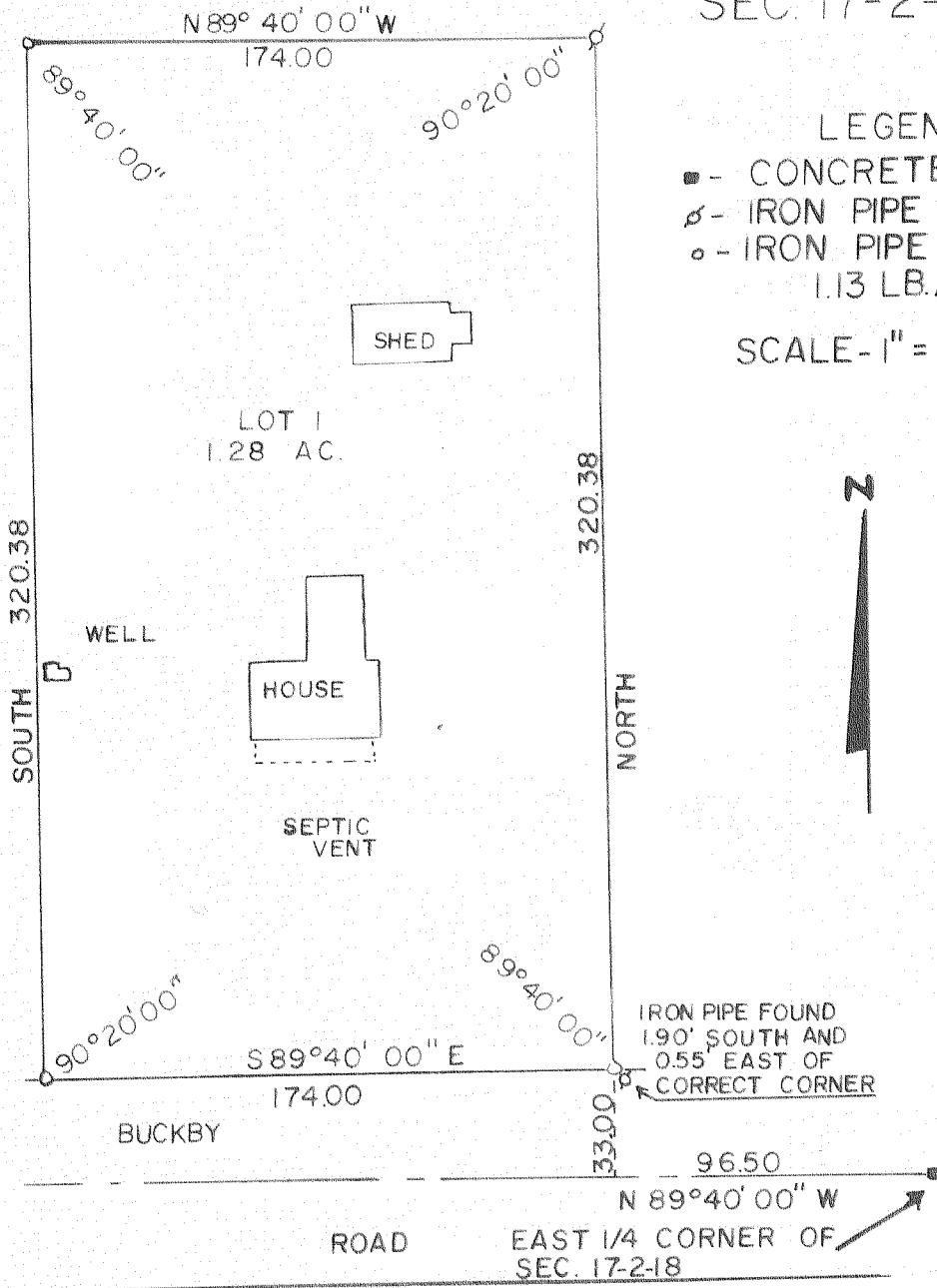
# CERTIFIED SURVEY NO. 716, 731, 761, & 776

LOCATED IN THE NW 1/4  
OF SEC. 31, T2N, R18E,  
WALWORTH COUNTY,  
WISCONSIN

### 761

### 716

LOCATED IN THE NE 1/4 OF  
SEC. 17-2-18



LEGEND  
 ■ - CONCRETE MONUMENT FOUND  
 ○ - IRON PIPE FOUND  
 ○ - IRON PIPE SET - 1" x 24"  
 1.13 LB./LIN. FT.

SCALE - 1" = 60'

N

LEGEND  
 ○ - IRON PIPE PLACED  
 1" x 24" 1.13 LB./LIN. FT.  
 ● - CONCRETE MONUMENT  
 5" DIA. x 30"

SCALE - 1" = 100'

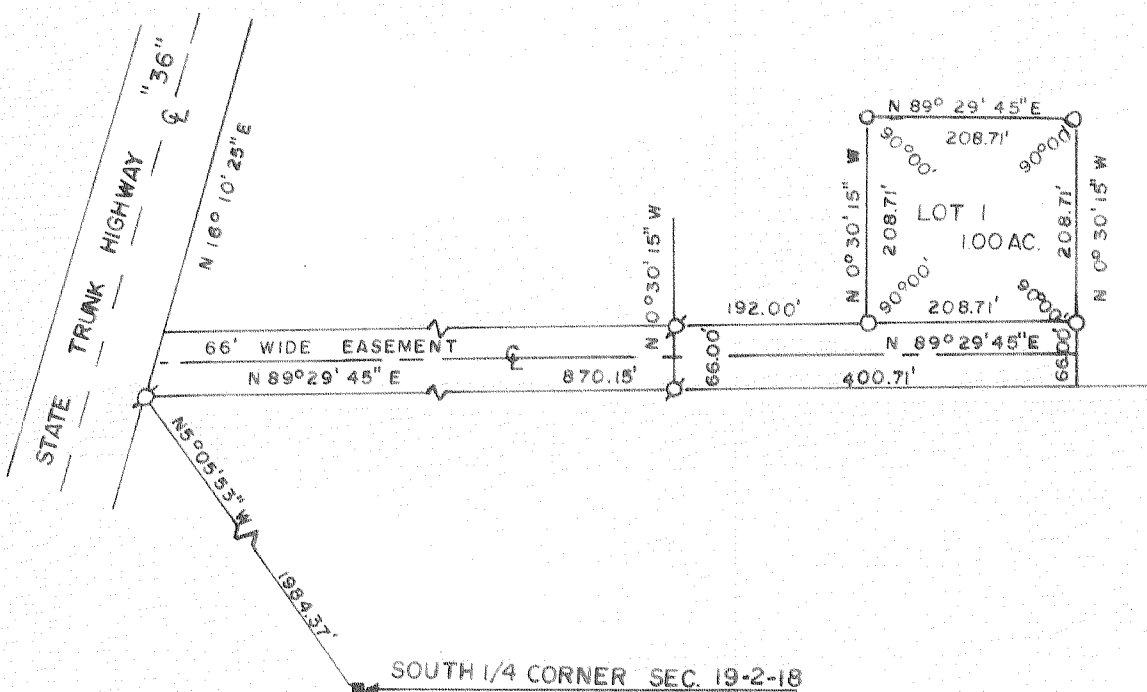
N

### 731

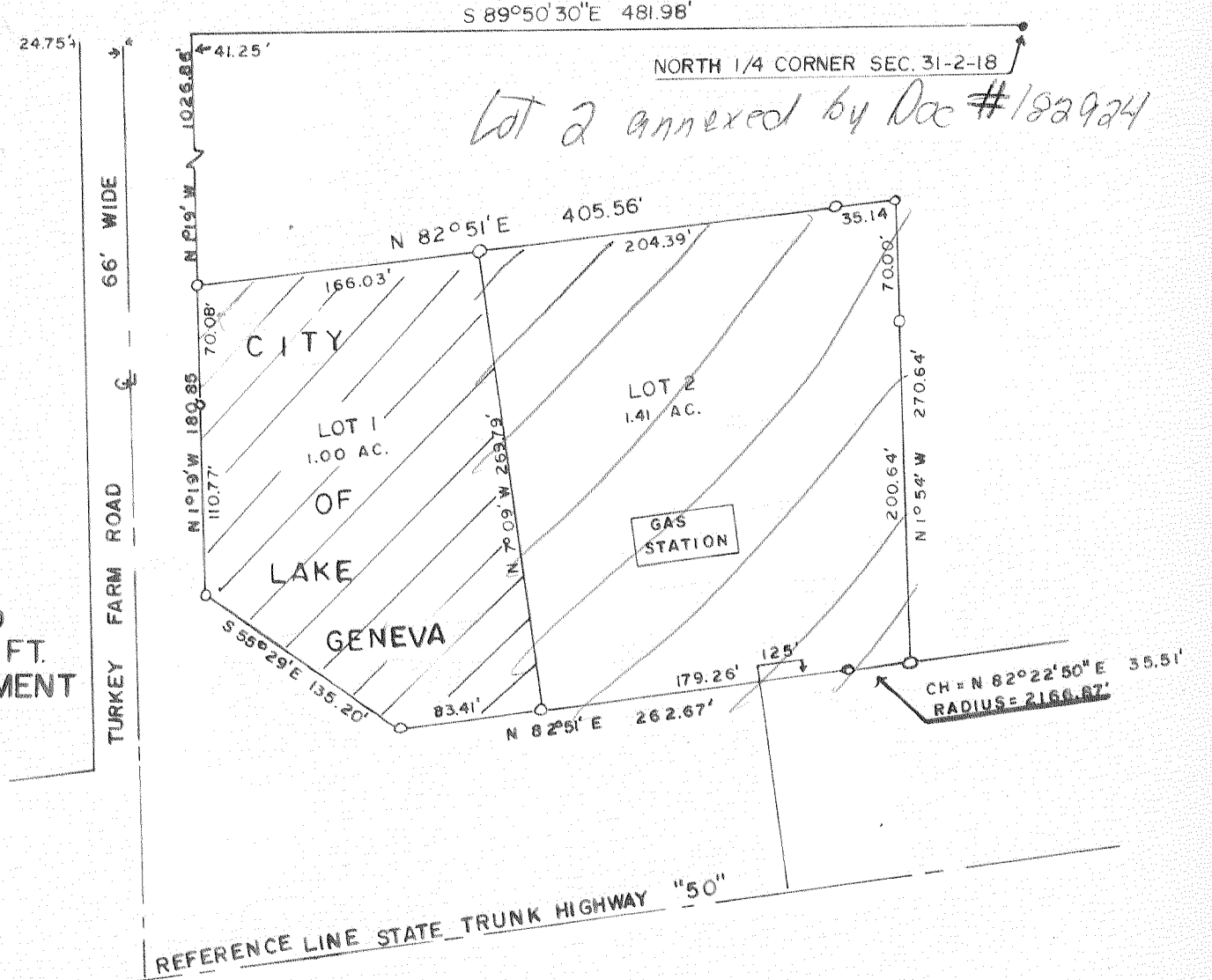
LOCATED IN THE SE 1/4 OF SEC. 19,  
T2N, R18E, WALWORTH COUNTY,  
WISCONSIN

LEGEND  
 ○ - IRON PIPE PLACED  
 1" x 24" 1.13 LB./LIN. FT.  
 ■ - CONCRETE MONUMENT FOUND  
 ○ - IRON PIPE FOUND

SCALE - 1" = 200'



SOUTH 1/4 CORNER SEC. 19-2-18

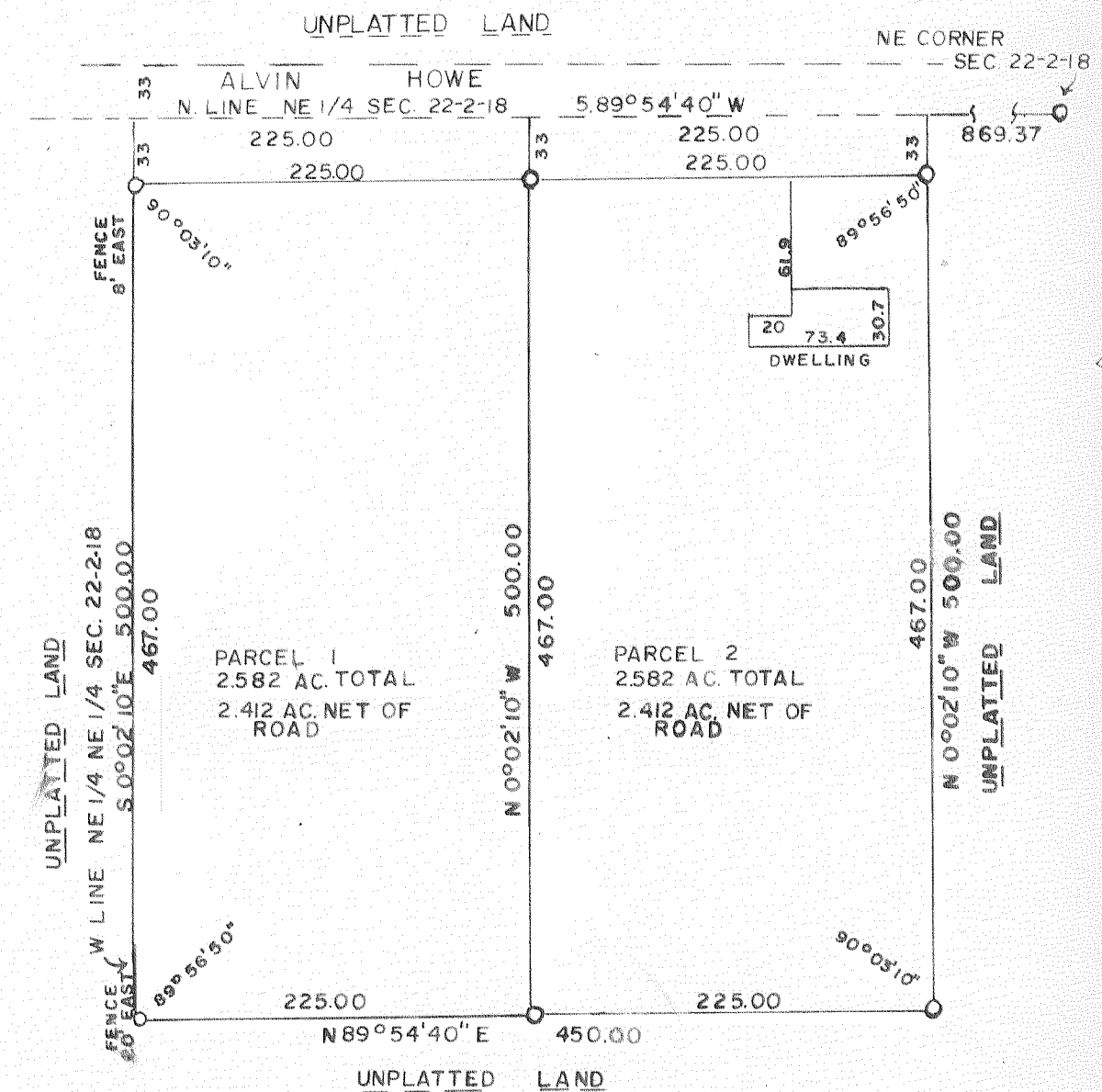


*Lot 2 annexed by Doc #189924*

### 776

LOCATED IN THE NE 1/4 OF THE NE 1/4 OF  
SEC. 22, T2N, R18E, TOWN OF LYONS,  
WALWORTH COUNTY, WISCONSIN

SCALE - 1" = 100' LEGEND = ○ - 1" x 24" IRON PIPE STAKE  
WEIGHT 1.13 LB./LIN. FT.



UNPLATTED LAND