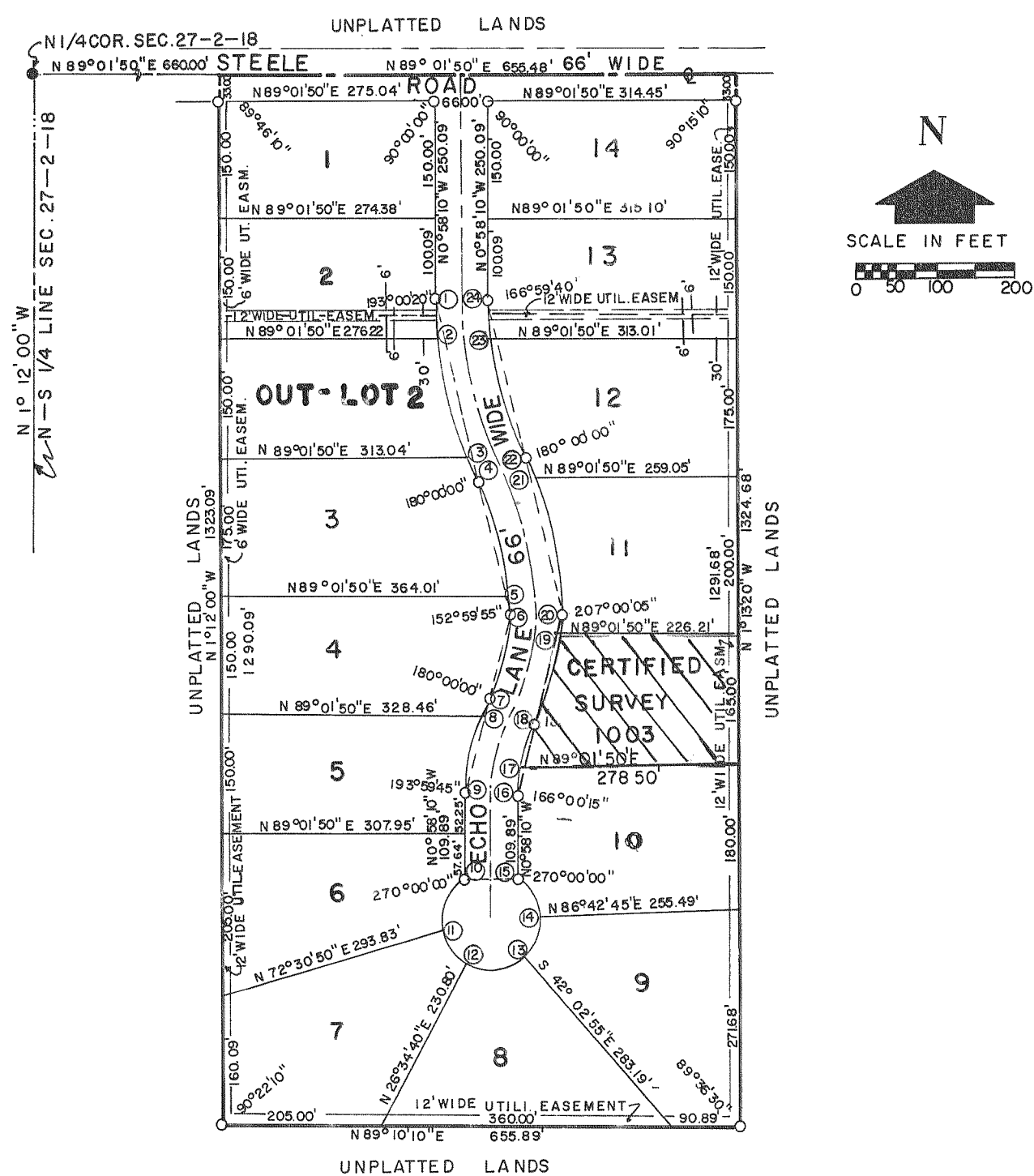


KNOB HILL SUBDIVISION

A SUBDIVISION LOCATED IN THE NW1/4 OF THE NE 1/4 OF SECTION 27-2-18 WALWORTH COUNTY, WISCONSIN



CUR. NO.	LOT NO.	RADIUS	CHORD LENGTH	CHORD BEARING	CENTRAL ANGLE	TANGENT BEARING
2-3	3	521.79	154.89	S14°58'36"E	17°02'16"	S6°27'28"E
3-4	4	"	31.73	S28°14'17"E	3°29'05"	S25°29'44"E
1-4	4	"	234.85	S13°58'30"E	26°00'40"	S26°58'50"E
4-5	4	389.14'	151.06'	S15°47'20"E	22°23'00"	S26°58'50"E
5-6	5	"	24.63	S2°47'00"E	3°37'40"	S4°35'50"E
4-6	6	"	175.15	S13°58'30"E	26°00'40"	S26°58'50"E
6-7	5	225.42	109.04	S13°01'35"W	27°09'50"	S0°58'10"E
7-8	5	250.11	21.73	S24°31'56"W	4°58'50"	S27°01'20"W
8-9	6	"	99.78	S10°32'10"W	23°00'40"	S22°02'30"W

CUR. NO.	LOT NO.	RADIUS	CHORD LENGTH	CHORD BEARING	CENTRAL ANGLE	TANGENT BEARING
10-11	7	60.00	68.69	S20°44'31.5"W	69°00'55"	S55°59'49"W
11-12	8	60.00	60.00	S38°48'14.5"E	49°14'57"	S14°10'46"E
12-13	9	60.00	67.64	N82°19'52"E	68°37'50"	S63°25'43"E
13-14	10	"	51.89	N22°19'38"E	51°14'18"	N47°56'47"E
14-15	11	"	54.77	N50°26'50"W	54°18'38"	N3°17'31"W
10-15	11	"	66.00	N89°01'50"W	6°44'02"	N07°56'09"W
16-17	11	184.11	32.89	N4°09'18"E	10°14'56"	N0°58'10"W
17-18	11	184.11	56.79	N18°09'03"E	17°44'34"	N9°16'46"E
18-19	11	184.11	89.05	N13°01'56"E	27°59'30"	N0°58'10"W

CUR. NO.	LOT NO.	RADIUS	CHORD LENGTH	CHORD BEARING	CENTRAL ANGLE	TANGENT BEARING
19-20	12	291.42	116.15	N15°31'38"E	22°59'24"	N27°01'20"E
18-20	12	291.42	25.43	N19°1'33"E	5°00'06"	N4°01'56"E
8-20	20	"	140.98	N13°01'55"E	27°59'30"	N27°01'20"E
20-21	12	455.14	178.02	N12°14'50"W	22°33'20"	N0°58'10"W
21-22	13	"	27.45	N25°18'10"W	3°27'20"	N25°51'30"W
20-22	13	"	204.65	N13°58'50"W	26°00'40"	N0°58'10"W
22-23	13	455.73	156.14	N7°07'06"W	15°45'30"	N26°58'50"W
23-24	14	"	49.98	N4°06'45"W	6°17'10"	N7°18'20"W
22-24	14	"	205.15	N13°58'30"W	26°00'40"	N4°06'45"W