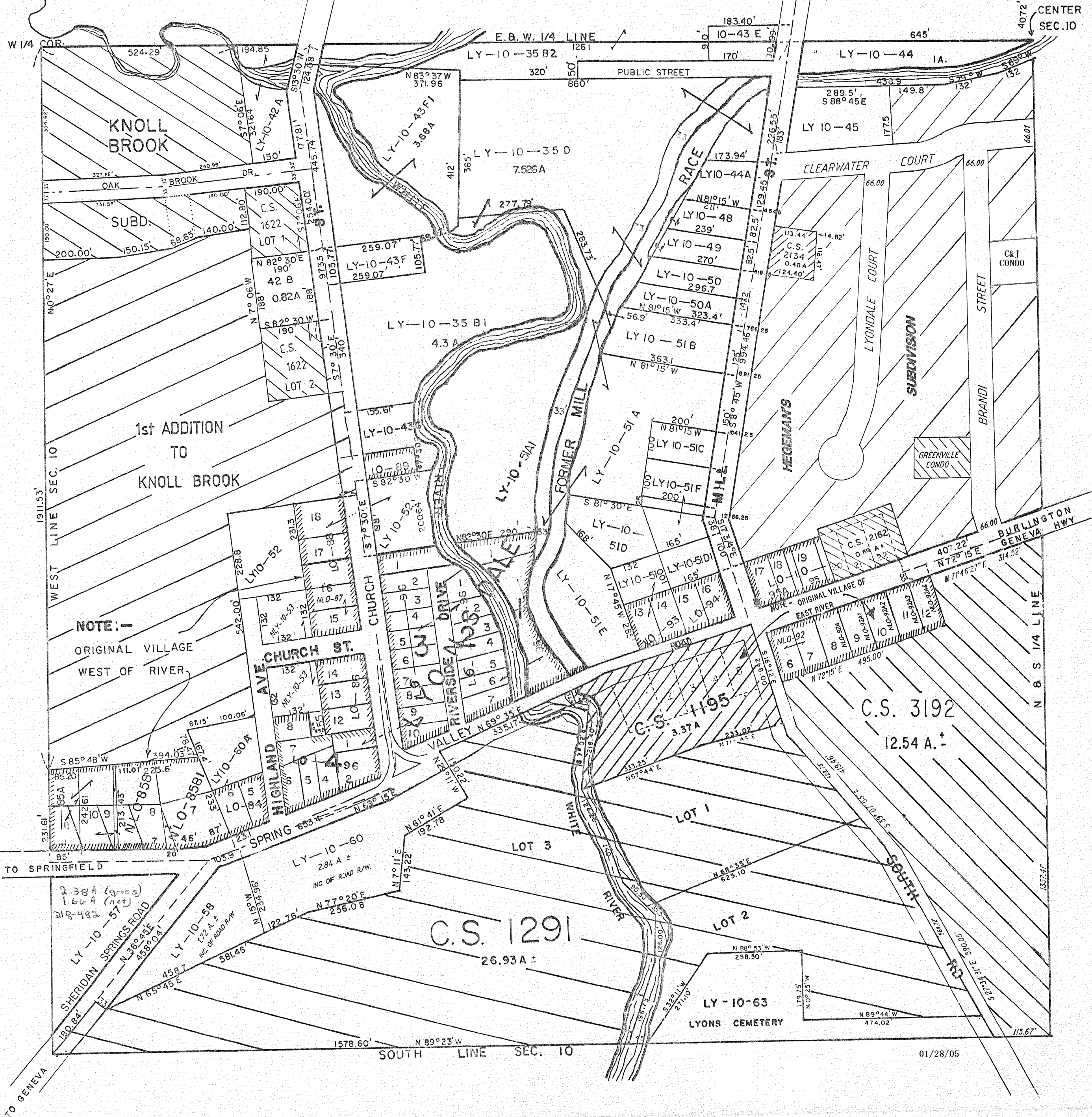


SW 1/4 - SEC. 10 - T2N - R18E - LYONS

SHOWING

LYONSDALE & ORIGINAL PLAT LYONS VILLAGE

SCALE = 1" = 200'



NOTE: -
ORIGINAL VILLAGE
WEST OF RIVER.

NOTE - ORIGINAL VILLAGE OF
EAST RIVER

2.38A (gross)
1.66A (net)
248-482
LY-10-57
SHERIDAN SPRINGS ROAD
N 38° 45' E
458° 04'

C.S. 1291
26.93A ±

C.S. 4195
3.37A

C.S. 3192
12.54 A. ±