

# BRIDLEWOOD ESTATES

A CONDOMINIUM LOCATED IN THE NORTHWEST 1/4 AND THE SOUTHWEST 1/4 OF SECTION 28 AND THE NORTHEAST 1/4 AND THE SOUTHEAST 1/4 OF SECTION 29, TOWN 2 NORTH, RANGE 18 EAST, TOWN OF LYONS, WALWORTH COUNTY, WISCONSIN.

108H

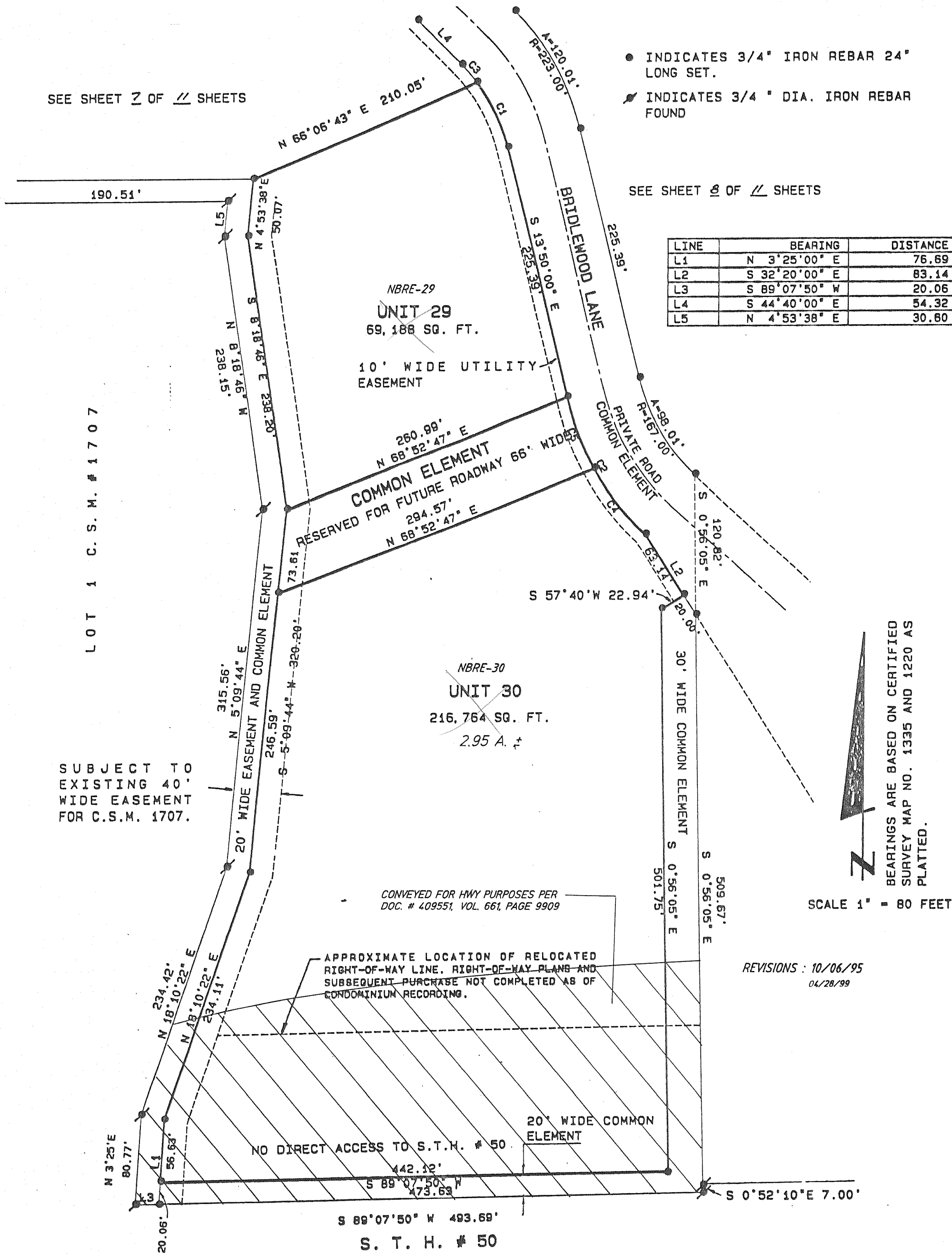
SEE SHEET 2 OF 4 SHEETS

● INDICATES 3/4" IRON REBAR 24" LONG SET.

⚡ INDICATES 3/4" DIA. IRON REBAR FOUND

SEE SHEET 3 OF 4 SHEETS

LINE	BEARING	DISTANCE
L1	N 3°25'00" E	76.69
L2	S 32°20'00" E	83.14
L3	S 89°07'50" W	20.06
L4	S 44°40'00" E	54.32
L5	N 4°53'38" E	30.60



See addendum #1  
Doc # 505128  
Changing boundaries

CURVE	ARC	DELTA	RADIUS	CHORD LENGTH	CHORD BEARING
C1	64.49	23°32'04"	157.00	64.04	S 25°36'02" E
C2	139.62	34°20'00"	233.00	137.54	S 31°00'00" E
C3	20.00	7°17'56"	157.00	19.98	S 41°01'02" E
C4	73.39	18°02'49"	233.00	73.09	N 38°08'35" W
C5	66.23	16°17'11"	233.00	66.01	N 21°58'35" W