

# BRIDLEWOOD ESTATES

A CONDOMINIUM LOCATED IN THE NORTHWEST 1/4 AND THE  
SOUTHWEST 1/4 OF SECTION 28 AND THE NORTHEAST 1/4 AND  
THE SOUTHEAST 1/4 OF SECTION 29, TOWN 2 NORTH, RANGE 18  
EAST, TOWN OF LYONS, WALWORTH COUNTY, WISCONSIN.

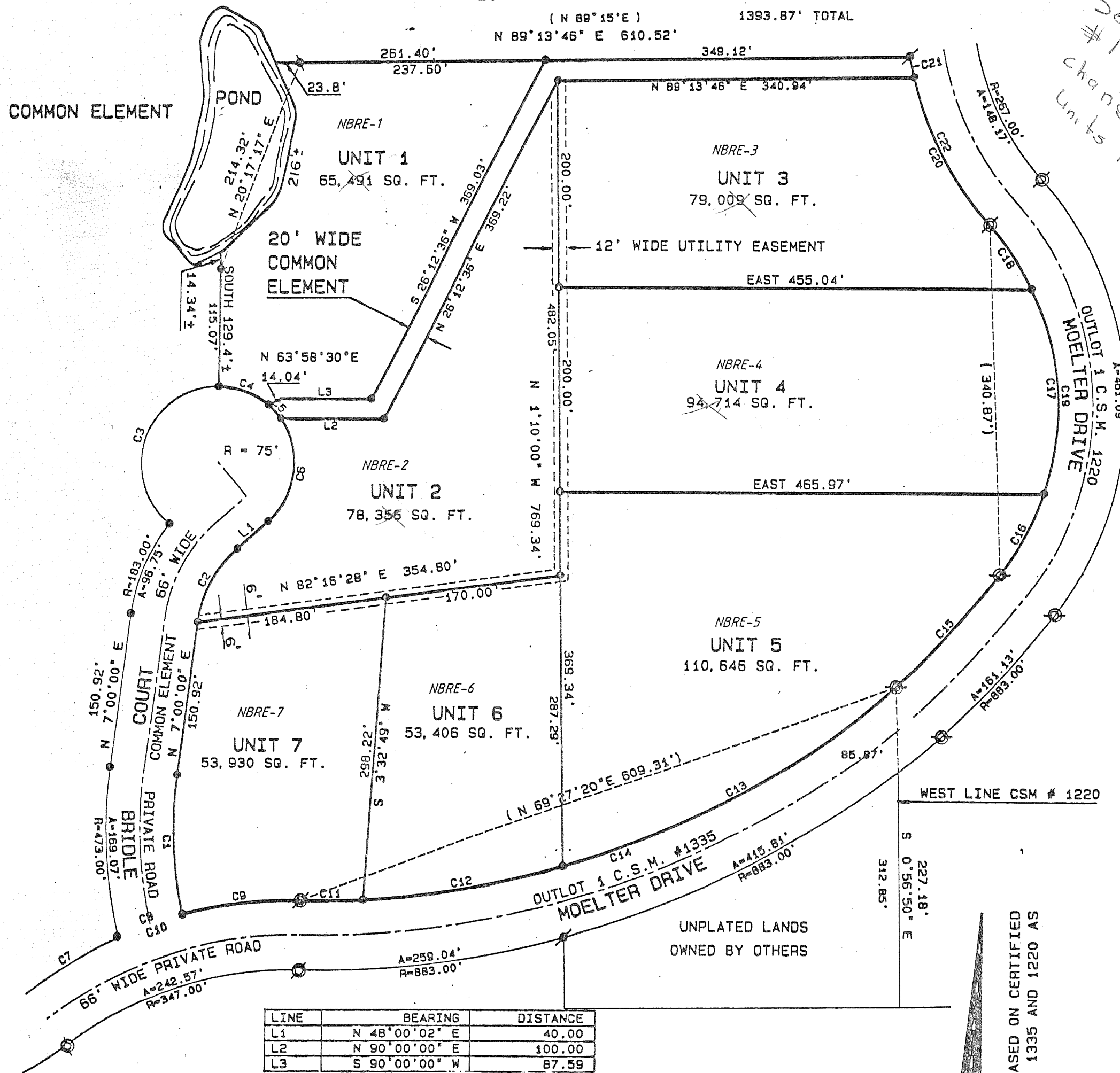
108B

LOT 1 C.S.M. # 2116

( N 89°15'E ) 1393.87' TOTAL

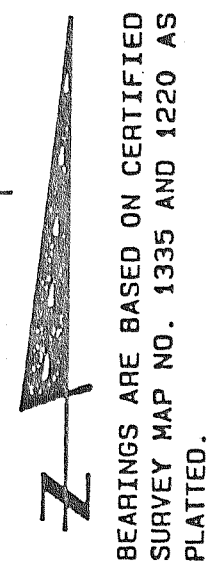
N 89°13'46" E 610.52'

COMMON ELEMENT



LINE	BEARING	DISTANCE
L1	N 48°00'02" E	40.00
L2	N 90°00'00" E	100.00
L3	S 90°00'00" W	87.59

CURVE	ARC	DELTA	RADIUS	CHORD LENGTH	CHORD BEARING
C1	138.48	19°29'41"	407.00	137.81	N 2°44'51" W
C2	83.72	41°00'00"	117.00	81.95	N 27°29'59" E
C3	185.03	141°21'07"	75.00	141.55	N 19°19'27" E
C4	53.00	40°29'20"	75.00	51.90	S 69°45'20" E
C5	18.78	14°20'35"	75.00	18.73	S 42°20'22" E
C6	108.87	83°10'04"	75.00	99.56	S 6°24'58" W
C7	104.98	14°33'50"	413.00	104.70	N 58°34'44" E
C8	66.50	9°13'33"	413.00	66.43	N 70°28'25" E
C9	117.23	16°15'50"	413.00	116.84	N 83°13'06" E
C10	288.71	40°03'12"	413.00	282.87	S 71°19'25" W
C11	60.45	4°14'22"	817.00	60.44	N 89°12'05" E
C12	196.08	13°45'03"	817.00	195.61	N 80°12'23" E
C13	367.29	25°45'29"	817.00	364.21	N 60°27'07" E
C14	623.82	43°44'54"	817.00	608.78	S 69°26'49" W
C15	149.05	10°27'11"	817.00	148.85	N 42°20'47" E
C16	90.16	19°20'55"	267.00	89.74	N 27°26'16" E
C17	205.56	44°06'41"	267.00	200.52	N 4°17'32" W
C18	74.04	15°53'20"	267.00	73.81	N 34°17'33" W
C19	369.77	79°20'56"	267.00	340.92	S 2°33'45" E
C20	164.40	28°17'09"	333.00	162.73	N 28°05'15" W
C21	20.41	3°30'40"	333.00	20.40	N 12°11'20" W
C22	184.80	31°47'49"	333.00	182.44	S 26°19'55" E



- INDICATES 3/4" DIA. IRON REBAR 24" LONG SET
- INDICATES 2" DIA. FOUND IRON PIPE
- ⊙ INDICATES 3/4" DIA. IRON REBAR FOUND
- xx) INDICATES RECORD DIMENSION

EXHIBIT "A" SHEET 3 OF 11 SHEETS.