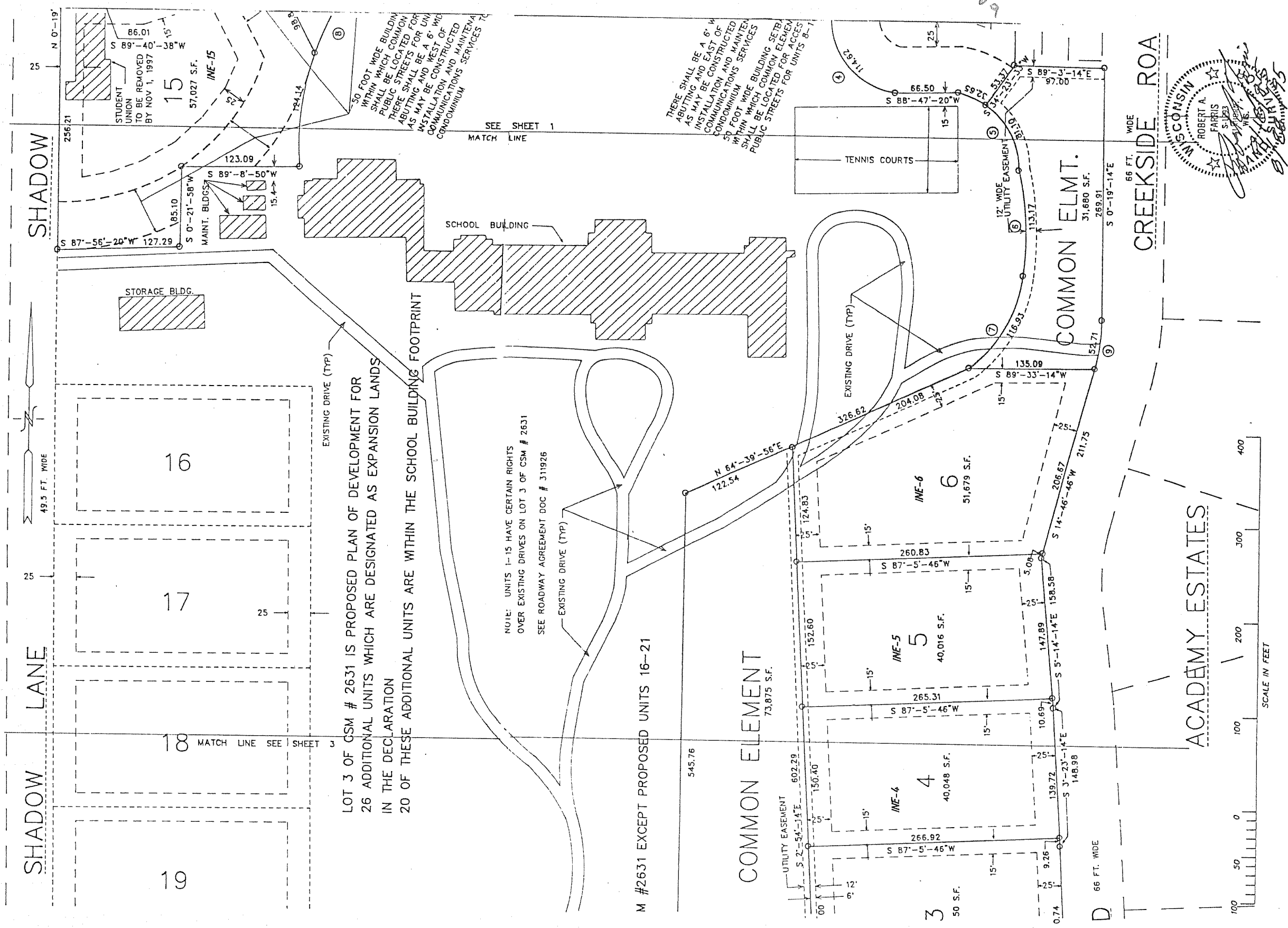


NORTHWESTERN ESTATES, A CONDOMINIUM
 LOCATED IN LOTS 1 & 2 OF CERTIFIED SURVEY MAP NO. 2631 IN NE 1/4 SEC 18 - 1 - 17, WALWORTH COUNTY, WISCONSIN

Now
 South Shore Club
 on Lake Geneva
 # 500527



LOT 3 OF CSM # 2631 IS PROPOSED PLAN OF DEVELOPMENT FOR
 26 ADDITIONAL UNITS WHICH ARE DESIGNATED AS EXPANSION LANDS
 IN THE DECLARATION
 20 OF THESE ADDITIONAL UNITS ARE WITHIN THE SCHOOL BUILDING FOOTPRINT

NOTE: UNITS 1-15 HAVE CERTAIN RIGHTS
 OVER EXISTING DRIVES ON LOT 3 OF CSM # 2631
 SEE ROADWAY AGREEMENT DOC # 311926

THERE SHALL BE A 6' W
 AS UTILITY AND EAST OF
 INSTALLATION AND MAINTENANCE
 COMMUNICATIONS SERVICES 7'

