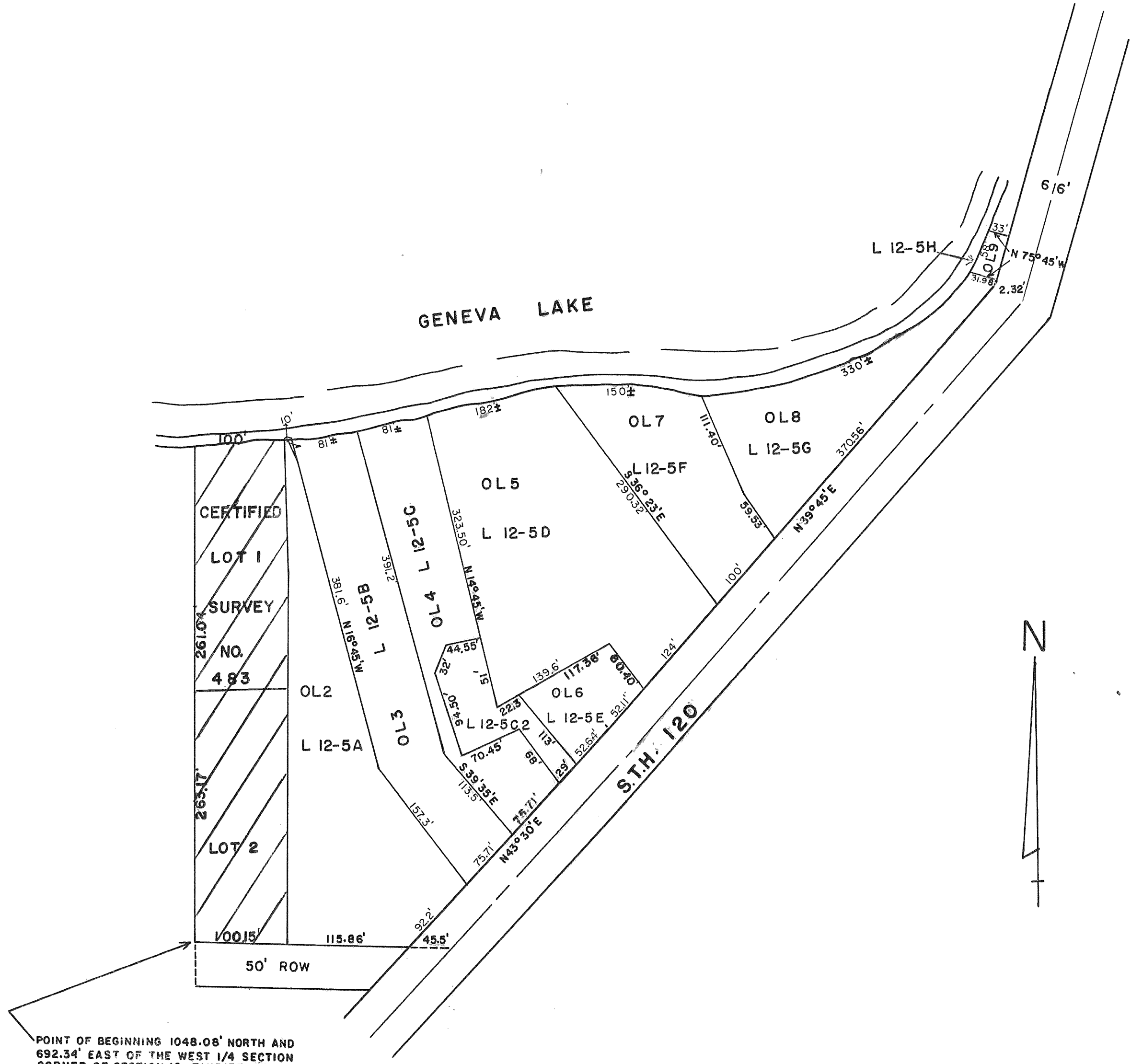


ASSESSOR'S PLAT "B" LINN TOWNSHIP

LOCATED IN THE NW 1/4 OF SECTION 12, T1N R17E

SCALE 1" = 100'



POINT OF BEGINNING 1048.08' NORTH AND 692.34' EAST OF THE WEST 1/4 SECTION CORNER OF SECTION 12, T1N R17E OF 4th PM.