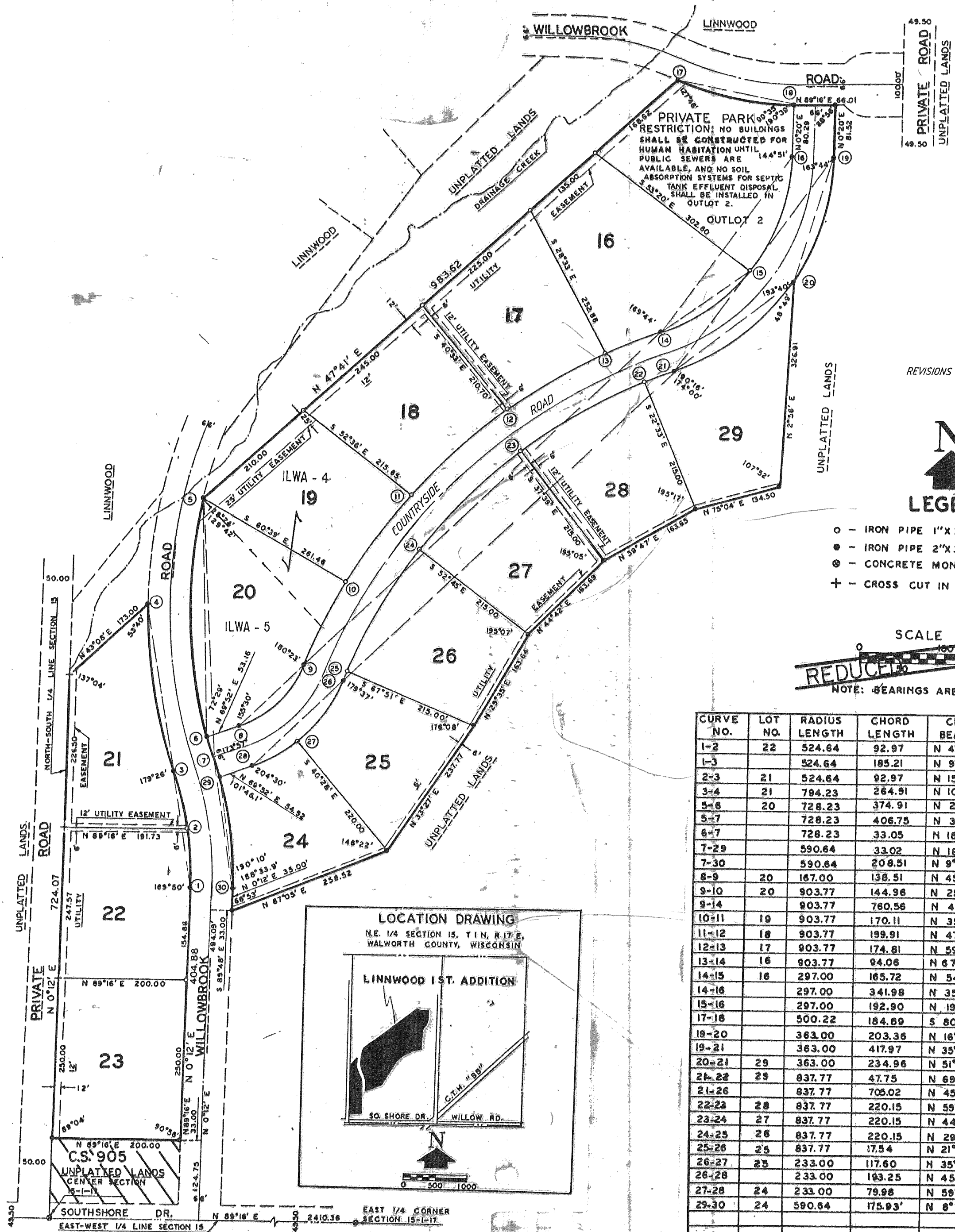


LINNWOOD 1ST ADDITION

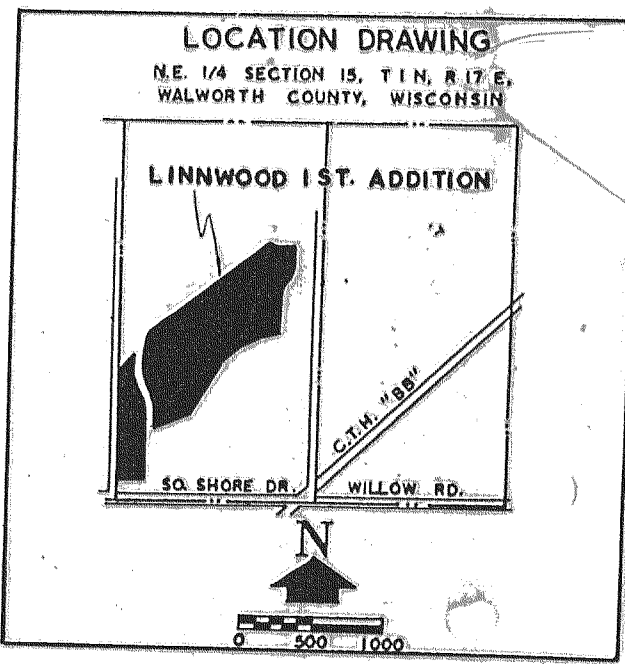
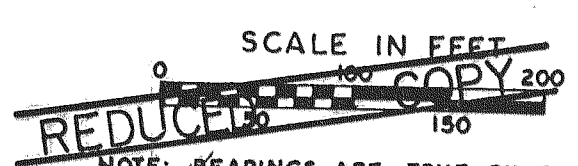
A SUBDIVISION LOCATED IN THE WEST 1/2 OF THE N.E. 1/4 OF SECTION 15, T1N, R17E, WALWORTH COUNTY, WISCONSIN



REVISIONS : 12/15/93
11/07/00



- - IRON PIPE 1"X24" MIN. WT. 1.13 LB./LIN. FT.
- - IRON PIPE 2"X30" MIN. WT. 3.65 LB./LIN. FT.
- ⊙ - CONCRETE MONUMENT
- + - CROSS CUT IN CONCRETE WALL



CURVE NO.	LOT NO.	RADIUS LENGTH	CHORD LENGTH	CHORD BEARING	CENTRAL ANGLE	TANGENT BEARING
1-2	22	524.64	92.97	N 4°53' W	10°10'	
1-3		524.64	185.21	N 9°58' W	20°20'	N 0°12' E
2-3	21	524.64	92.97	N 15°03' W	10°10'	
3-4	21	784.23	264.91	N 10°32' W	19°12'	N 20°08' W
5-6	20	728.23	374.91	N 2°37' W	29°50'	
5-7		728.23	406.75	N 3°55' W	32°26'	N 20°08' W
6-7		728.23	33.05	N 18°50' W	2°38'	
7-29		590.64	33.02	N 18°31.9' W	3°12.2'	
7-30		590.64	208.51	N 9°58' W	20°20'	N 0°12' E
8-9	20	167.00	138.51	N 45°22' E	49°00'	N 69°32' E
9-10	20	903.77	144.96	N 25°28' E	9°12'	
9-14		903.77	760.56	N 45°45' E	49°46'	N 20°52' E
10-11	19	903.77	170.11	N 35°28' E	10°48'	
11-12	18	903.77	199.91	N 47°13' E	12°42'	
12-13	17	903.77	174.81	N 59°07' E	11°06'	
13-14	16	903.77	94.06	N 67°39' E	5°58'	
14-15	16	297.00	165.72	N 54°26' E	32°24'	
14-16		297.00	341.98	N 35°29' E	70°18'	N 70°38' E
15-16		297.00	192.90	N 19°17' E	37°54'	
17-18		500.22	184.89	S 80°05' E	21°18'	N 89°16' E
19-20		363.00	203.36	N 16°36' E	32°32'	
19-21		363.00	417.97	N 35°29' E	70°18'	N 0°20' E
20-21	29	363.00	234.96	N 51°45' E	37°46'	
21-22	29	837.77	47.75	N 69°00' E	3°16'	
21-26		837.77	705.02	N 45°45' E	49°46'	N 70°38' E
22-23	28	837.77	220.15	N 59°49' E	15°06'	
23-24	27	837.77	220.15	N 44°43' E	15°06'	
24-25	26	837.77	220.15	N 29°37' E	15°06'	
25-26	25	837.77	17.54	N 21°28' E	1°12'	
26-27	23	233.00	117.60	N 35°29' E	29°14'	
26-28		233.00	183.25	N 45°22' E	49°00'	N 69°52' E
27-28	24	233.00	79.98	N 59°59' E	19°46'	
29-30	24	590.64	175.93'	N 8°21.9' W	17°07.8'	