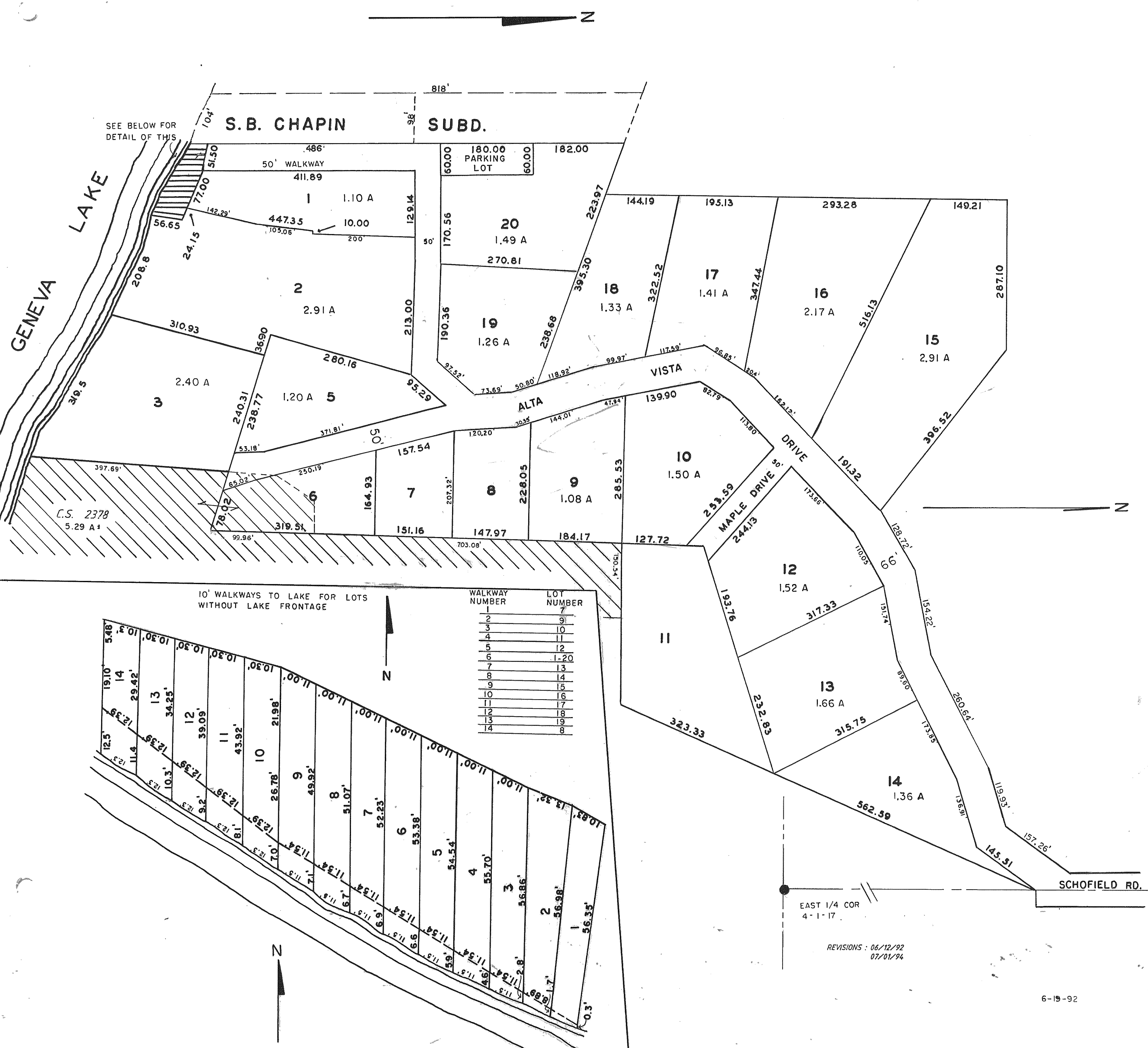


# ALTA VISTA ESTATES

SECTION 4, T17N R17E  
TOWN OF LINN

CABINET A SLIDE 84



SEE BELOW FOR  
DETAIL OF THIS

S.B. CHAPIN

SUBD.

GENEVA  
LAKE

C.S. 2378  
5.29 A

10' WALKWAYS TO LAKE FOR LOTS  
WITHOUT LAKE FRONTAGE

EAST 1/4 COR  
4-1-17

REVISIONS : 06/12/92  
07/01/94