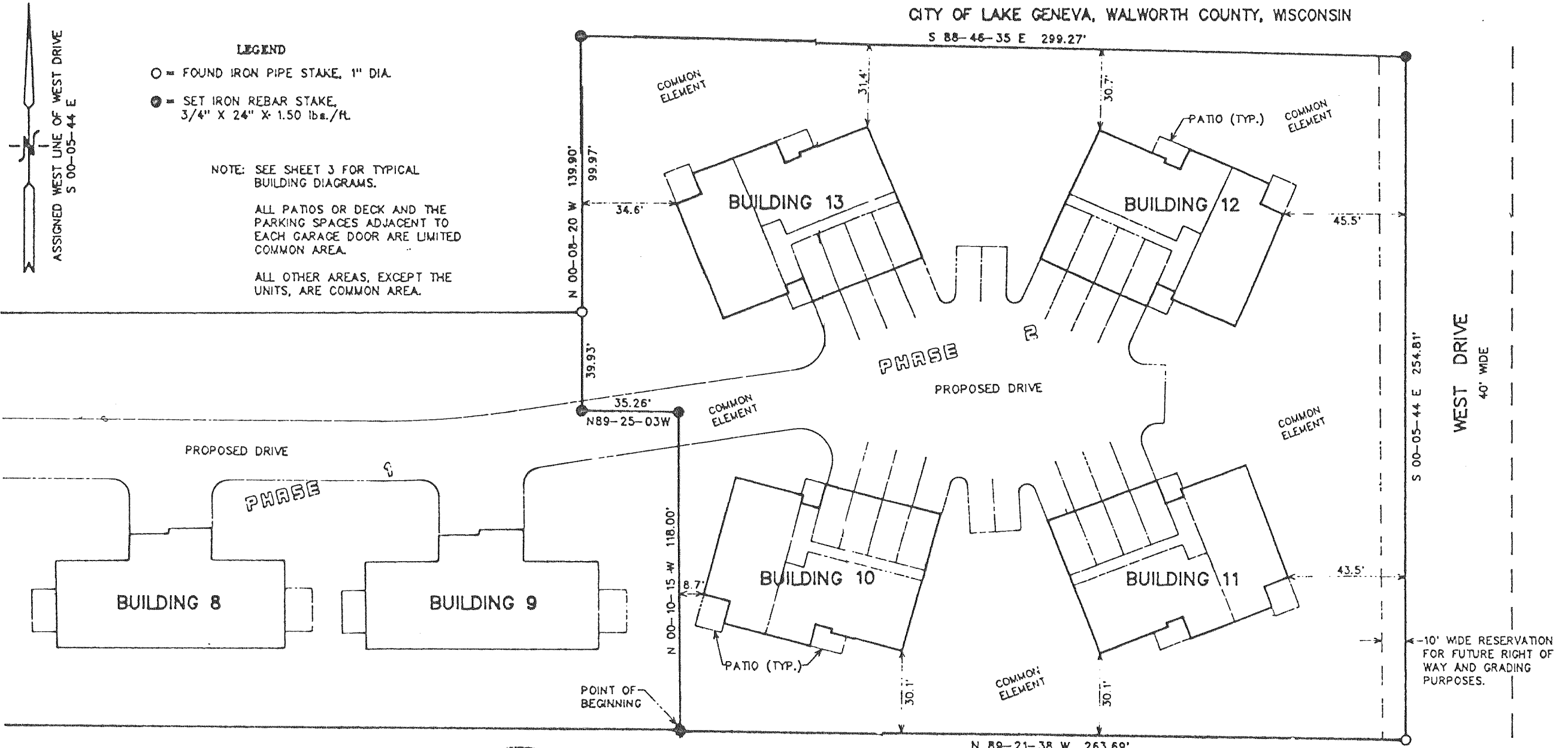


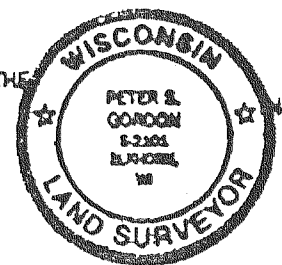
THE TWINS ON CURTIS - AMENDMENT NO. 1
DECLARING PHASE 2 TO SHOW UNITS & COMMON ELEMENTS
 CITY OF LAKE GENEVA, WALWORTH COUNTY, WISCONSIN

S 88-46-35 E 299.27'



"I, PETER S. GORDON, A WISCONSIN REGISTERED LAND SURVEYOR, S-2101, DO HEREBY CERTIFY THAT THIS CONDOMINIUM PLAT IS A CORRECT REPRESENTATION OF THE CONDOMINIUM DESCRIBED AND IDENTIFICATION AND LOCATION OF EACH UNIT AND THE COMMON ELEMENTS CAN BE DETERMINED FROM THIS PLAT."

Peter S. Gordon 3/26/97
 PETER S. GORDON R.L.S. 2101



NOTE: BUILDINGS AND IMPROVEMENTS SHOWN ON THIS EXHIBIT REPRESENT PROPOSED CONSTRUCTION NOT BEGUN AS OF THE DATE HEREOF.

UNIT DESIGNATIONS ARE BB-# WHERE AS BB=BUILDING NUMBER AND #=UNIT NUMBER. (EXAMPLE: 12-2)

REVISIONS: